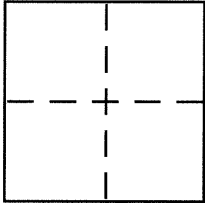


CORNER RECORD

BK 79 PG 54Document Number CR 8289City of BERKELEYCounty of ALAMEDA, CaliforniaBrief Legal Description CITY OF BERKELEY MONUMENT B1359

CORNER TYPE

Government Corner . Control ☒
Meander . Property .
Rancho . Other .
Date of Survey 3-22-2016

COORDINATES (Optional)

N. _____
E. _____
Zone _____ NAD27 . NAD83 .
NAD83 Epoch _____
Elev. _____
Vert. Datum: NGVD29 . NAVD88 .
Meas. Units: Metric . Imperial .

Corner – Left as found ☒ Found and tagged . Established . Reestablished . Rebuilt .

Identification and type of corner found: Evidence used to identify or procedure used to establish or reestablish the corner:
**IN COMPLIANCE WITH SECTION 8771 OF THE PROFESSIONAL LAND SURVEYORS' ACT, THIS CORNER
RECORD IS BEING FILED TO ESTABLISH THE POSITION OF AN EXISTING MONUMENT PRIOR TO
STREET REHABILITATION CONSTRUCTION.**

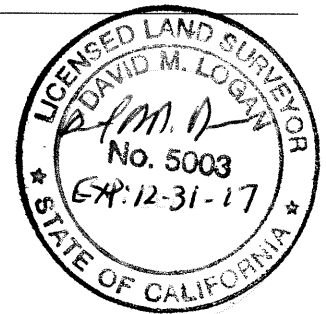
A description of the physical condition of the monument as found and as set or reset: _____

SEE PAGE 2

SURVEYOR'S STATEMENT

This Corner Record was prepared by me or under my direction in conformance with
the Land Surveyor's Act on 4-4-2016

Signed D. M. Logan P.L.S. or R.C.E. No. 5003



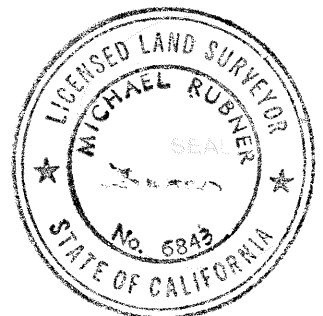
COUNTY SURVEYOR'S STATEMENT

This Corner Record was received 25 APRIL, 2016


and examined and filed 4 MAY, 2016

Signed Michael Rubner P.L.S. or R.C.E. No. 6843

Title COUNTY SURVEYOR

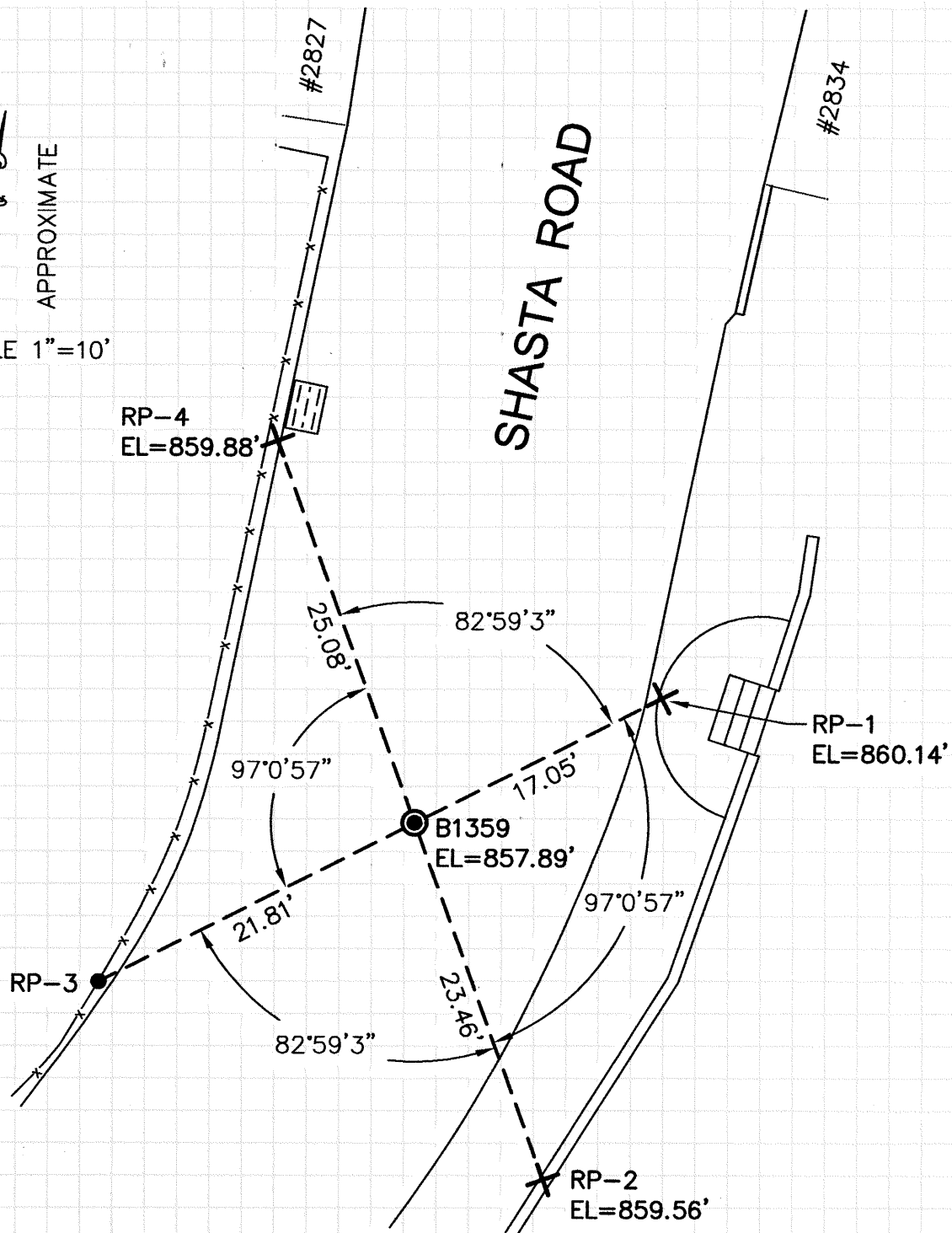


County Surveyor's Comment _____






 APPROXIMATE

 SCALE 1"=10'



LEGEND

- 
 2" BRASS DISC CITY MONUMENT WITH A PUNCH MARK IN A STANDARD MONUMENT WELL
- 
 SET REFERENCE CROSS
- 
 SET NAIL IN 4"X4" FENCE POST NORTHEAST SIDE OF GATE

NOTE:

THE EXISTING MONUMENT AS SHOWN IS REFERENCED BY STRAIGHT LINES BETWEEN RP-1 TO RP-3 AND RP-2 TO RP-4.