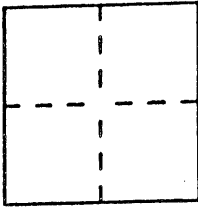


CORNER RECORD

Document Number CR888City of OAKLANDCounty of ALAMEDA, CaliforniaBrief Legal Description LOT 27, AMENDING MAP OF TRACT 4072, FILED MARCH 10, 1992
IN MAP BOOK 201, PAGE 1-4, ALAMEDA COUNTY RECORDER'S OFFICE

CORNER TYPE

Government Corner ☐ Control ☐
 Meander ☐ Property ☒
 Rancho ☐ Other ☐
 Date of Survey MARCH 4, 1997

COORDINATES
(Optional)

N. _____
 E. _____
 Zone _____ Datum _____
 Elev. _____

Corner — Left as found ☒ Found and tagged ☐ Established ☒ Reestablished ☐ Rebuilt ☐

Identification and type of corner found: Evidence used to identify, or procedure used to establish or reestablish the corner:

SEE SKETCH ON BACK

BASIS OF BEARINGS: LINE BETWEEN TWO FOUND STANDARD CITY OF OAKLAND
MONUMENTS ON MENDOZA DRIVE OPPOSITE LOTS 29 & 40 TAKEN AS N7°32'59"E,
123.09', AS SHOWN ON AMENDING MAP OF TRACT 4072 FILED ON MARCH 10, 1992,
IN MAP BOOK 201, PAGE 1-4, ALAMEDA COUNTY RECORDER'S OFFICE

A description of the physical condition of the monument as found and as set or reset:

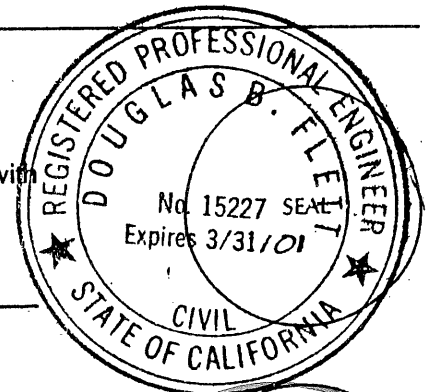
STANDARD CITY MONUMENTSSEE SKETCH ON BACK

SURVEYOR'S STATEMENT

This Corner Record was prepared by me or under my direction in conformance with

the Land Surveyors' Act on APRIL 28 1997.

Signed Douglas B. Fleet L.S. or R.C.E. Number 15227

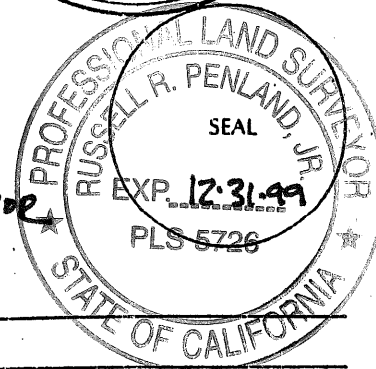


COUNTY SURVEYOR'S STATEMENT

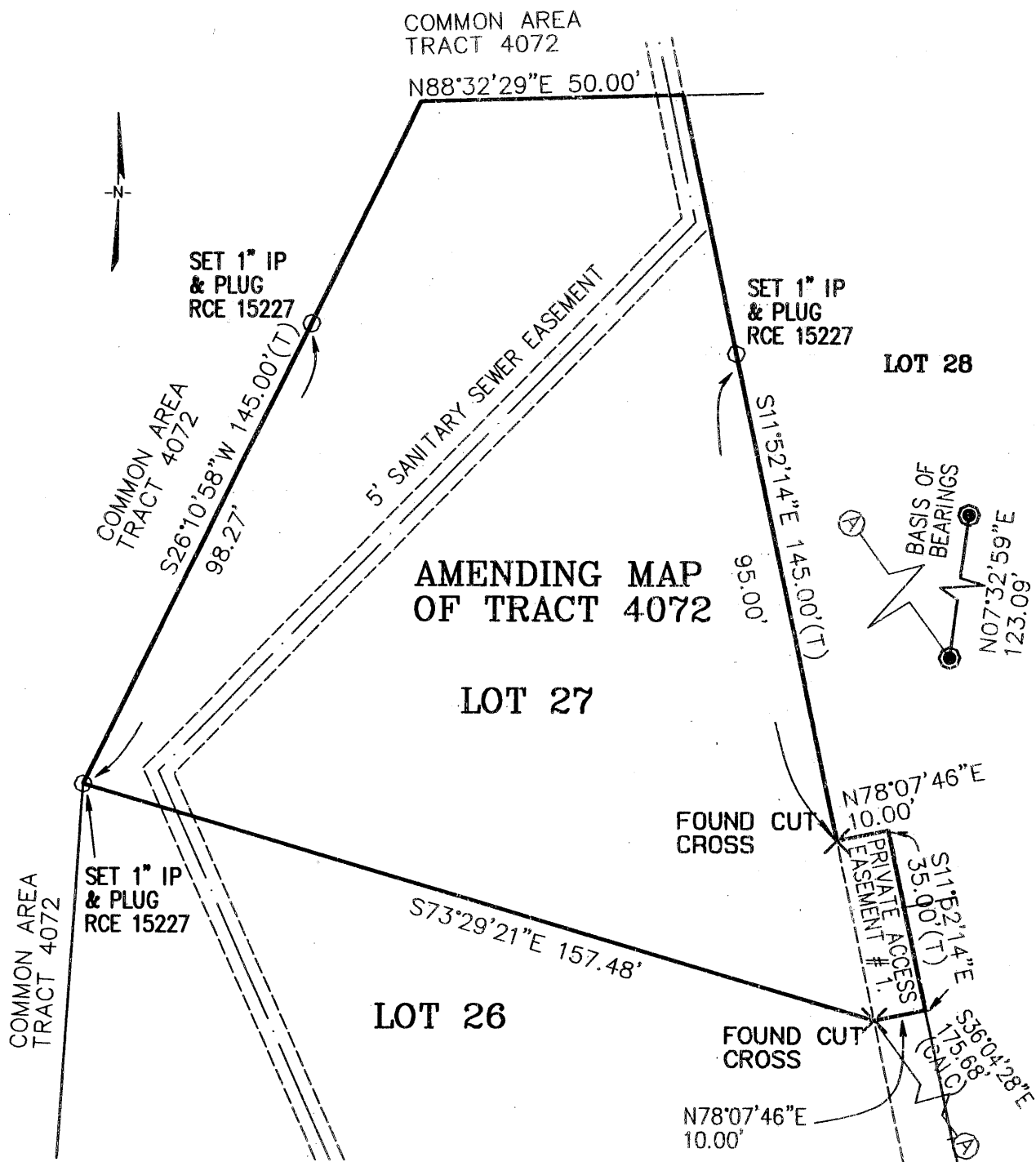
This Corner Record was received 4-30-1997 and examined

and filed 5-27-1998

Signed Russell R. Penland, Jr. Title DEPUTY COUNTY SURVEYOR

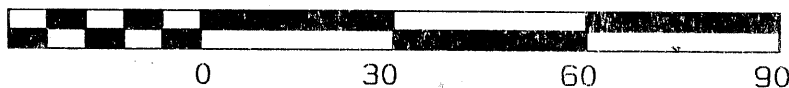


County Surveyor's Comment _____



GRAPHIC SCALE

1" = 30'



● STANDARD CITY MONUMENT
WITH BRASS DISK AND
PUNCH MARK

NOTE: ALL MONUMENTS
FLUSH AT TIME OF
SURVEY