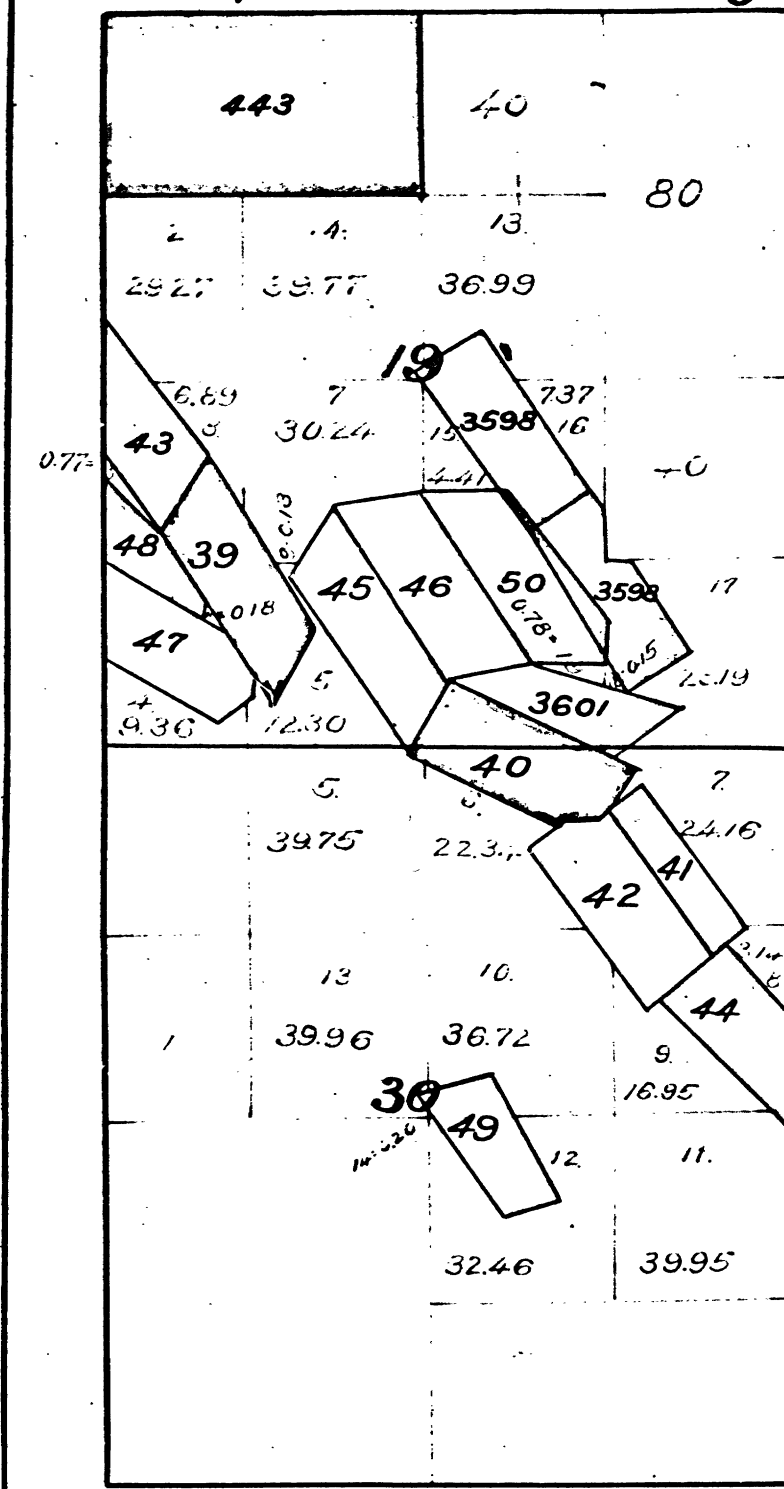


Township N°2 North, Range N°12 East, Mount Diablo Meridian.

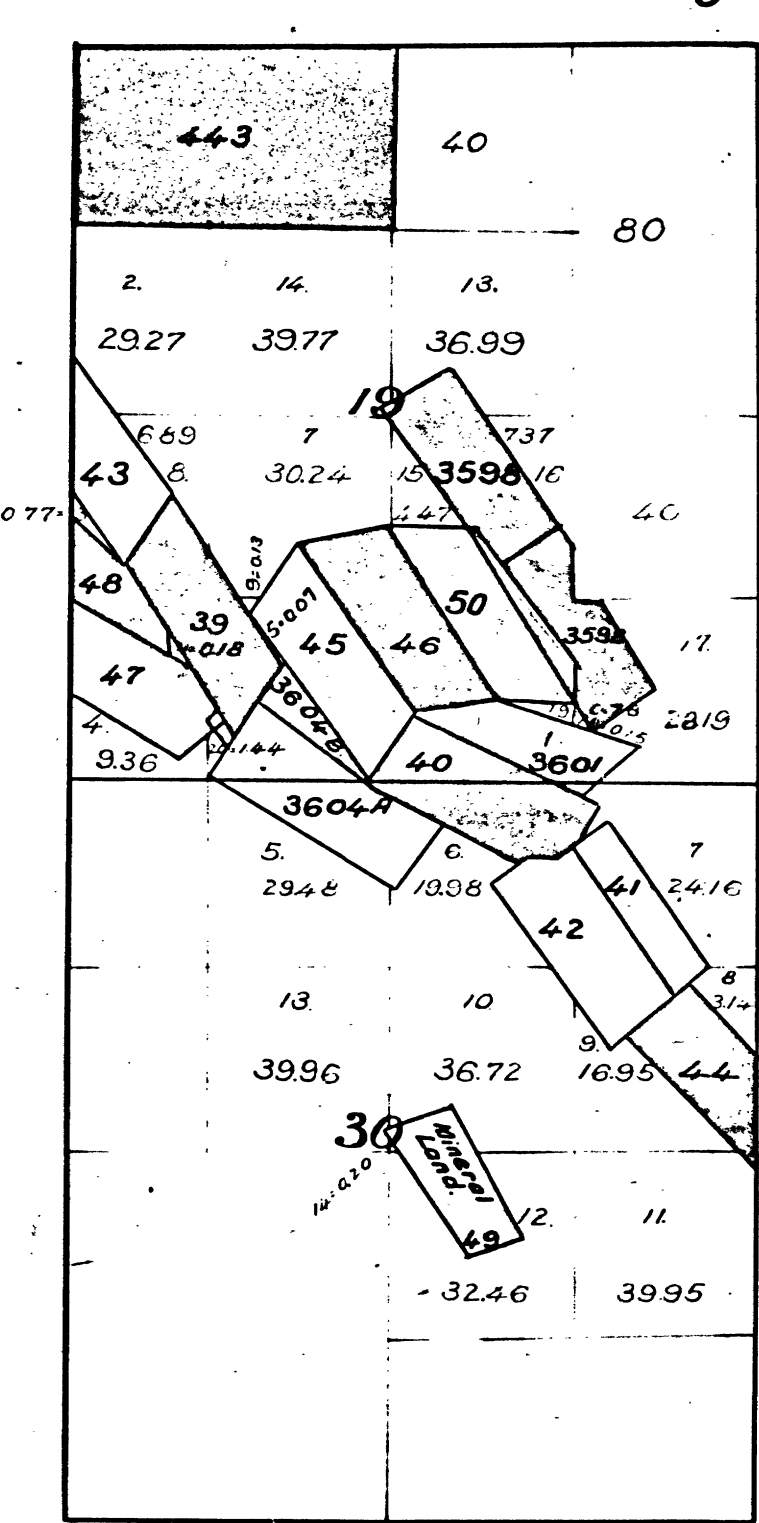


- 39 Pine Log N°2 Quartz Mine.
- 40 Royal
- 41 Ant Hill
- 42 Good Enough
- 43 Pine Log
- 44 Emma
- 45 Mauritius
- 46 Hill Top
- 47 Bulger and Last Chance Consolidated Quartz Mine, Bulger Location
- 48 " " " " " Last Chance
- 49 Empire Quartz Mine.
- 50 Undeveloped
- 443 Mineral Entry Blue Mountain Placer (Letter of Stockton L.O. Dec. 1895)
- 3598 Morning Star Lode.
- Dublin Lode.
- 3601 Julia Quartz Mine.

This diagram of Sections 19 and 30, Township N°2 North, Range N°12 East, Mount Diablo Meridian, is correctly copied from the original plat as amended, on file in this Office.
U.S. Surveyor General's Office.
San Francisco, California.
November 12, 1898.

J. M. Gleaves.
U.S. Surv. Gen. Cal.

Township N°2 North, Range N°12 East, Mount Diablo Meridian.



- 39 Pine Log N°2 Quartz Mine.
- 40 Royal
- 43 Pine Log
- 45 Mauritius
- 46 Hill Top
- 47 Bulger and Last Chance Consolidated Quartz Mine, Bulger Location
- 48 " " " " " Last Chance
- 50 Undeveloped Quartz Mine.
- 443 Mineral Entry Blue Mountain Placer (Letter of Stockton L.O. Dec. 1895)
- 41 Ant Hill Quartz Mine.
- 42 Good enough
- 44 Emma
- 49 Empire
- 3598 Morning Star Lode.
- Dublin
- 3601 Julia Quartz Mine
- 3604 William R. Lode
- 3604 A. Mt. King
- 3604 B. " Mill Site.

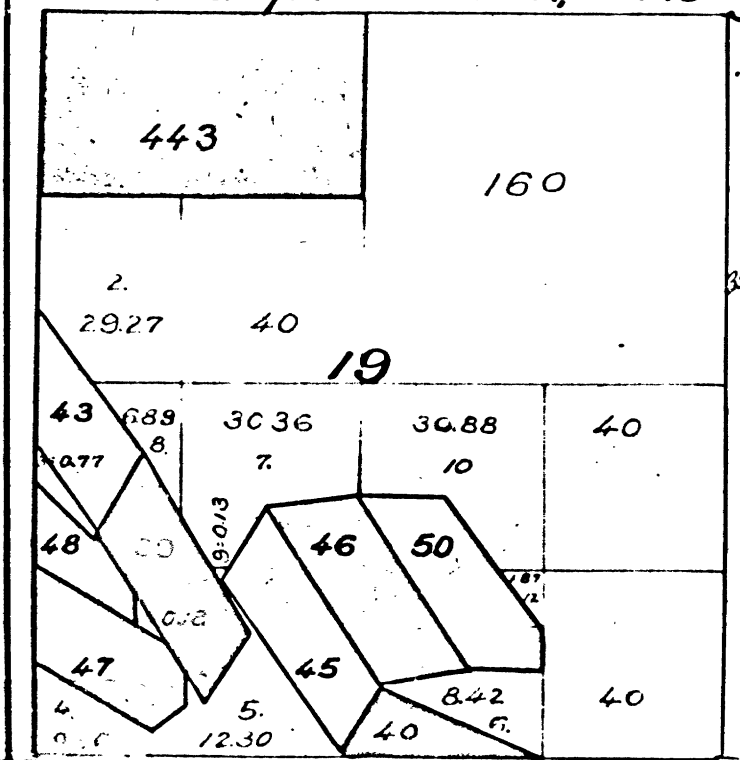
DEPARTMENT OF THE INTERIOR,
GENERAL LAND OFFICE,
Washington, D. C. Dec. 14, 1897.
I hereby certify that this is a true copy
of the plat of official survey of the lands
to which it relates, on file in this office.

H. H. ...
Recorder, General Land Office.

This diagram of Sections 19 and 30, T. 2 N., R. 12 E., M. D. M. is correctly copied from the original plat as amended, on file in this Office.
U.S. Surveyor General's Office.
San Francisco, California
December 22, 1898.

J. M. Gleaves.
U.S. Surv. Gen. Cal.

Township N°2 North, Range N°12 East, Mount Diablo Meridian.

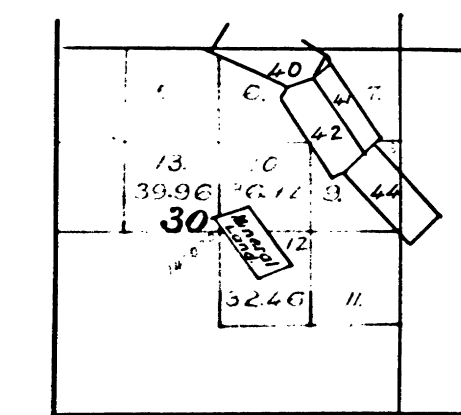


- 39 Pine Log N°2 Quartz Mine.
- 40 Royal
- 43 Pine Log
- 45 Mauritius
- 46 Hill Top
- 47 Bulger and Last Chance Consolidated Quartz Mine, Bulger Location
- 48 " " " " " Last Chance
- 50 Undeveloped Quartz Mine
- 443 Mineral Entry Blue Mountain Placer (Letter of Stockton L.O. Dec. 1895)

This diagram of Section 19, Township N°2 North, Range N°12 East, Mount Diablo Meridian, is correctly copied from the original plat as amended, on file in this Office.
U.S. Surveyor General's Office.
San Francisco, California.
August 20, 1898.

J. M. Gleaves.
U.S. Surv. Gen. Cal.

T. 2 N., R. 12 E., M. D. M.



Segregation Agricultural from Mineral land, Lot 10, 12, 13, 14, Sec. 30, claimed by Martin Nambie, Surveyed May 1895 by H. H. Coulter U.S. dep. min. land surveyor.

The above diagram of Section 30, T. 2 N., R. 12 E., Mount Diablo Meridian is correctly copied from the amended map on file in this Office.
U.S. Surveyor General's Office.
San Francisco, California
August 15, 1895

W. S. ...
U.S. Surv. Gen. Cal.

