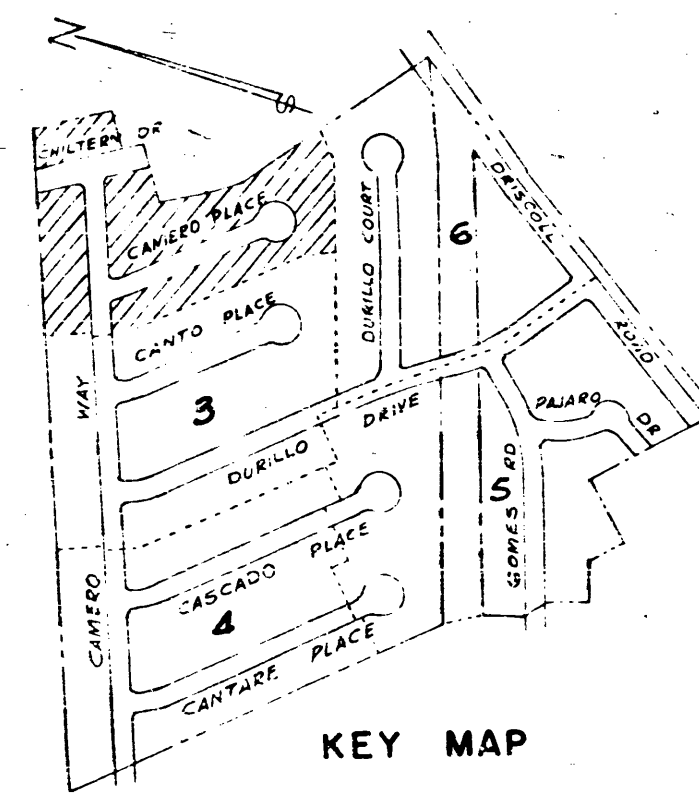
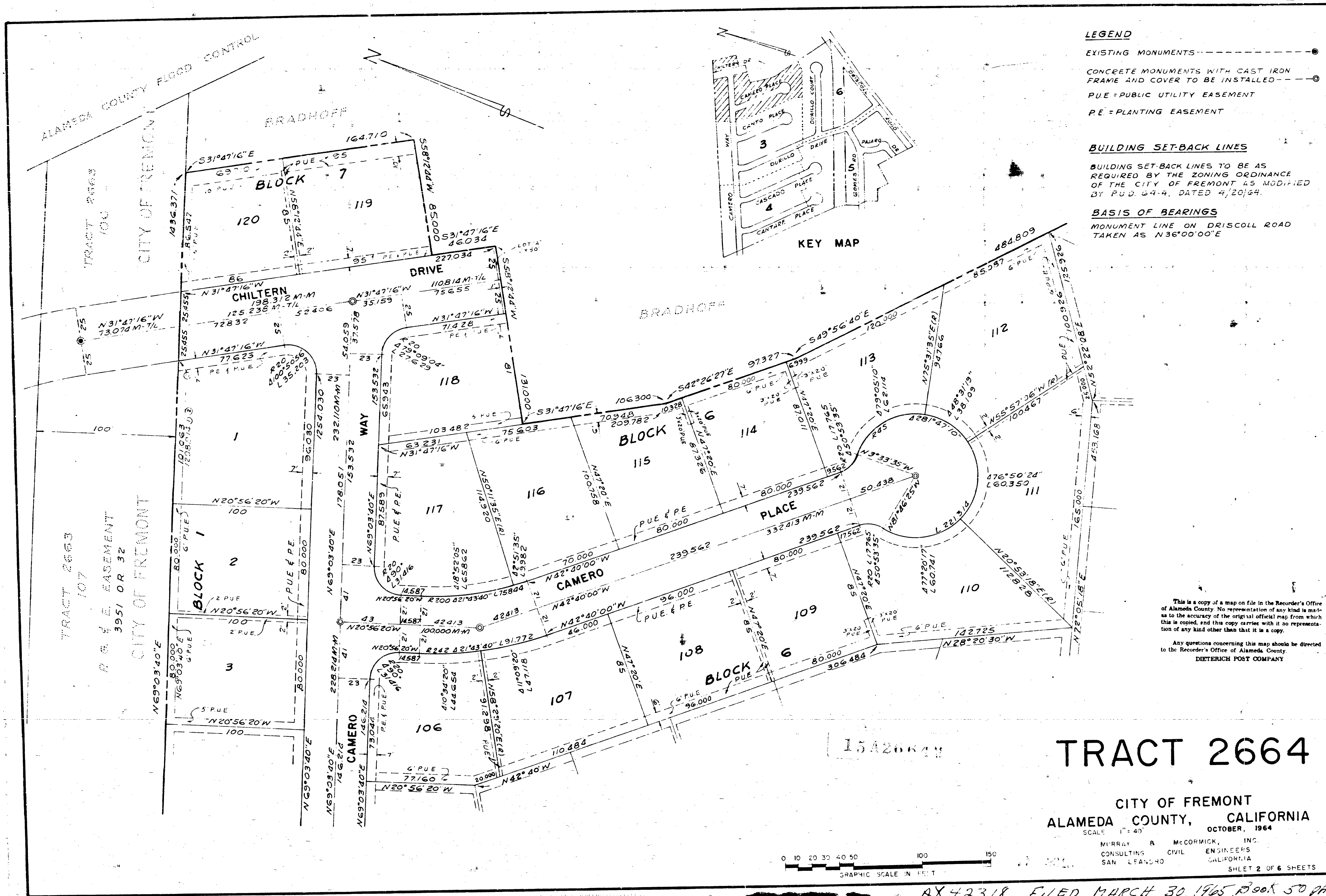


50-950

50-9-11

TK 266



- LEGEND**
- EXISTING MONUMENTS -----●-----
 - CONCRETE MONUMENTS WITH CAST IRON FRAME AND COVER TO BE INSTALLED -----●-----
 - PUE = PUBLIC UTILITY EASEMENT
 - PE = PLANTING EASEMENT
- BUILDING SET-BACK LINES**
- BUILDING SET-BACK LINES TO BE AS REQUIRED BY THE ZONING ORDINANCE OF THE CITY OF FREMONT AS MODIFIED BY PUD 64-4, DATED 4/20/64.
- BASIS OF BEARINGS**
- MONUMENT LINE ON DRISCOLL ROAD TAKEN AS N36°00'00"E

This is a copy of a map on file in the Recorder's Office of Alameda County. No representation of any kind is made as to the accuracy of the original official map from which this is copied, and this copy carries with it no representation of any kind other than that it is a copy.

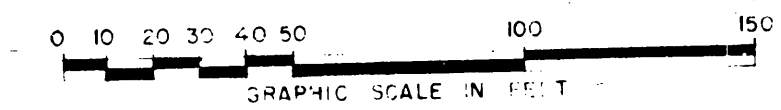
Any questions concerning this map should be directed to the Recorder's Office of Alameda County.

DIETERICH POST COMPANY

TRACT 2664

CITY OF FREMONT
ALAMEDA COUNTY, CALIFORNIA
SCALE 1" = 40' OCTOBER, 1964

MURRAY & MCCORMICK, INC.
CONSULTING CIVIL ENGINEERS
SAN LEANDRO, CALIFORNIA
SHEET 2 OF 6 SHEETS



AX 42318 FILED MARCH 30, 1965 BOOK 50 PAGES 975

457