

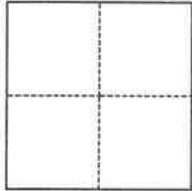
CORNER RECORD

Agency Index

BK 150 PG 74

Document Number

CR 16227

City of San Leandro County of Alameda, CaliforniaBrief Legal Description Common Line of Lot 27 & 28 in Tract 673 (08 M 59) of Alameda County Records**CORNER TYPE****COORDINATES (Optional)**

- ☐ Government Corner ☐ Control
☐ Meander ☒ Property
☐ Rancho ☐ Other

Date of Survey July 28, 2022

N. _____ E. _____

Elevation _____

Units

☐ Metric☐ U.S. Survey Foot

Horizontal Datum _____

Zone _____ Epoch Date _____

Vertical Datum _____

☐ Complies with Public Resources Code §§8801-8819☐ Complies with Public Resources Code §§8890-8902

PLS Act Ref.:

☒ 8765(d)☐ 8771☐ 8773☐ Other:Corner/
Monument:☐ Left as found☐ Established☐ Rebuilt☐ Pre-Construction☐ Found and tagged☒ Reestablished☐ Referenced☐ Post-Construction

Narrative of corner identified and monument as found, set, reset, replaced, or removed:

☒ See sheet #2 for description(s):

Found, confirmed by field measurement, and used existing street monuments as shown per Tract 673 (Book 08 of Maps at Page 59 of Alameda County Records) to re-establish the common lot line between Lot 27 and Lot 28 of said map by utilizing record data as shown on Page 2 of this Corner Record.

SURVEYOR'S STATEMENT

This Corner Record was prepared by me or under my direction in conformance with

the Professional Land Surveyors' Act on August 25, 2022

Signed

P.L.S. or R.C.E. No.

P.L.S. 6421**COUNTY SURVEYOR'S STATEMENT**

This Corner Record was received

and examined and filed

JAN 12 2023

Signed

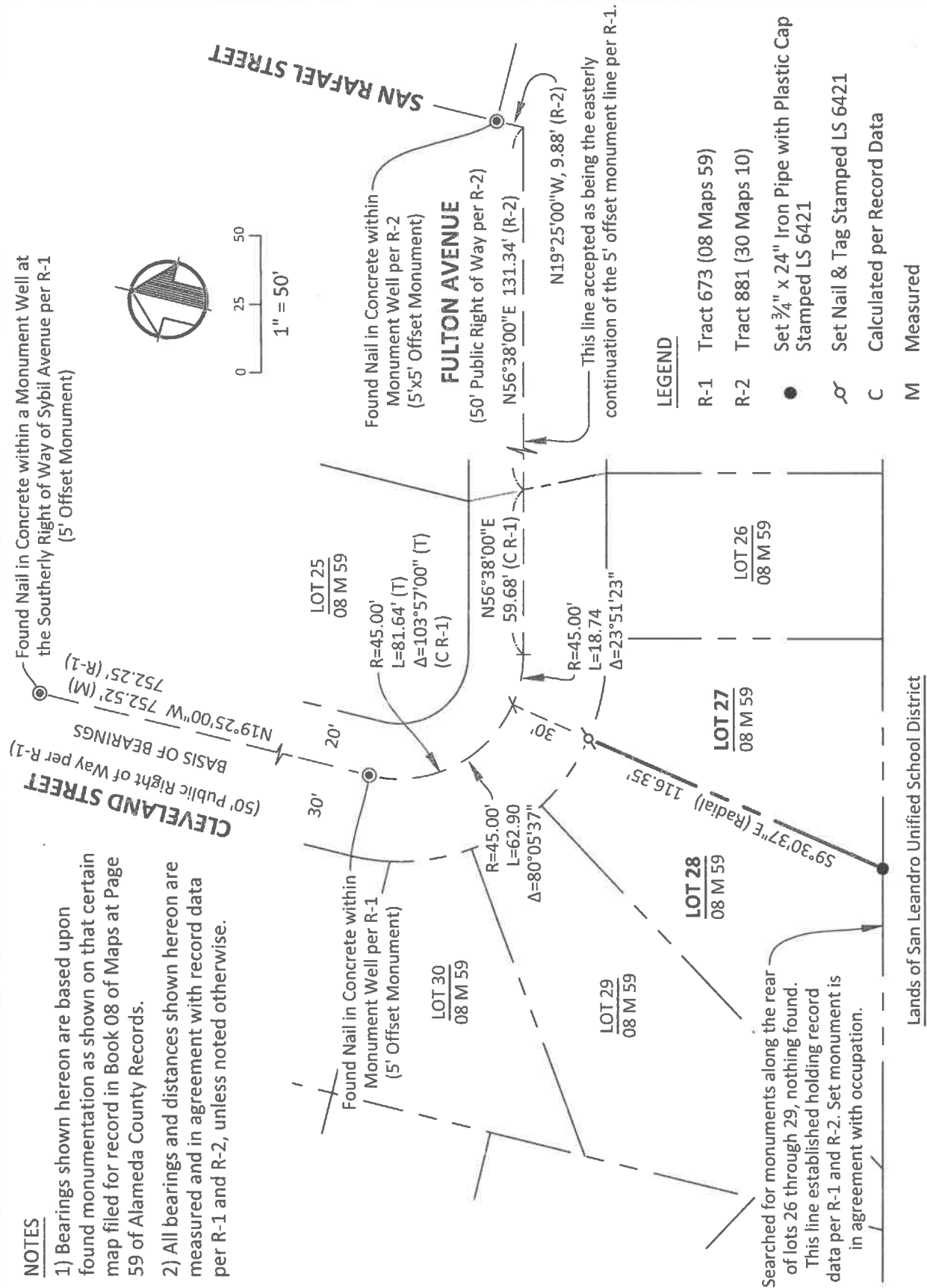
P.L.S. or R.C.E. No.

7010Title ALAMEDA COUNTY SURVEYOR

County Surveyor's Comment



- 1) Bearings shown hereon are based upon found monumentation as shown on that certain map filed for record in Book 08 of Maps at Page 59 of Alameda County Records.
- 2) All bearings and distances shown hereon are measured and in agreement with record data per R-1 and R-2, unless noted otherwise.



This line established holding record data per R-1 and R-2. Set monument is in agreement with occupation.