

FINISH SCHEDULE										
ROOM NAME	FLOOR		BASE		WALL		CEILING			
100 DINING ROOM	T200	24" X 24" TILE	T111	6" X 36" TILE	P101-P104 T111 WALL COVERING	POINT TILE	C1	2' X 2' ARMSTRONG, SEPIA #PN91311		
101 SERVING AREA	S1 S2	PLAIN ABRASIVE IN HIGH TRAFFIC AREAS	S1	6" H CONT. (KITCHEN EQUIPMENT ON 6" NSF APPROVED LEGS)	T111 TILE		C3	GYB BOARD W/ PAINT P103		
102 DRIVE-THRU STATION	S1 S2	PLAIN ABRASIVE IN HIGH TRAFFIC AREAS	S1	6" H CONT. (KITCHEN EQUIPMENT ON 6" NSF APPROVED LEGS)	WP1 FRP PANEL		C2	2' X 4' SUSPENDED GRID WASHABLE VINYL COATED GYP BOARD PANELS		
103 KITCHEN	S1 S2	PLAIN ABRASIVE IN HIGH TRAFFIC AREAS	S1	6" H CONT. (KITCHEN EQUIPMENT ON 6" NSF APPROVED LEGS)	WP3 S.S. BEHIND COOK LINE WP1 FRP PANEL		C2	2' X 4' SUSPENDED GRID WASHABLE VINYL COATED GYP BOARD PANELS		
104 KITCHEN PREP.	S1 S2	PLAIN ABRASIVE IN HIGH TRAFFIC AREAS	S1	6" H CONT. (KITCHEN EQUIPMENT ON 6" NSF APPROVED LEGS)	WP1 FRP PANEL		C2	2' X 4' SUSPENDED GRID WASHABLE VINYL COATED GYP BOARD PANELS		
105 WALK-IN COOLER	S1 S2	PLAIN ABRASIVE IN HIGH TRAFFIC AREAS	S.S. / ALUMINUM WITH 3/8" RADIUS		EXT S.S. INT ALUMINUM GALVANIZED S.S.		ALUMINUM GALVANIZED STAINLESS STEEL			
105A WALK-IN FREEZER	GALVANIZED STAINLESS STEEL S1 SILKAL UNDER WIF SUBFLOOR		S.S. / ALUMINUM WITH 3/8" RADIUS		EXT S.S. INT ALUMINUM GALVANIZED S.S.		ALUMINUM GALVANIZED STAINLESS STEEL			
106 MEN'S ROOM	T200	24" X 24" TILE	SCHLUTER		T108 TILE		C3	GYB BOARD W/ P101 SMOOTH WASHABLE PAINT		
107 WOMEN'S ROOM	T200	24" X 24" TILE	SCHLUTER		T108 TILE		C3	GYB BOARD W/ P101 SMOOTH WASHABLE PAINT		
108 VESTIBULE	T200	24" X 24" TILE	T111	6" X 36" TILE	P101 PAINT GYB BOARD T111 TILE		C3	GYB BOARD W/ P101 SMOOTH WASHABLE PAINT		
109 NOT USED										
110 EXTERIOR STORAGE	SEALED CONCRETE, SMOOTH FINISH				WP1 FRP PANEL		C3	GYB BOARD W/ P101 SMOOTH WASHABLE PAINT		
111 ENTRY VESTIBULE	T200 M100 4' X 6' MAT	24" X 24" TILE	T111	6" X 36" TILE	P101 T111	POINT TILE	C3	GYB BOARD W/ P101 SMOOTH WASHABLE PAINT		
DOOR & HARDWARE SCHEDULE										
INSTALLED AND FURNISHED BY: G.C. UNLESS NOTED OTHERWISE										
CONTRACTOR TO PURCHASE DOOR HARDWARE & FRAME DIRECTLY FROM PANDA'S NATIONAL ACCOUNT SUPPLIER. SUPPLIER TO PROVIDE ALL STOREFRONT DOOR HARDWARE, PL-AM DOORS & FRAMES AND HM DOORS & FRAMES					HARDWARE		HINGE	STOP	ACCESSORIES	REMARKS
CONTACT FOR QUOTING, ORDERING & LOGISTICS APRIL WALDREN, PROJECT MANAGER 800-887-4307 EXT. 350 PHONE AWaldren@pandaexpress.com, pawaldren@pandaexpress.com					ELECT. MAG-LOCK, WEINTRY KEYPAD & EXT. BUTT					
CONTACT FOR GENERAL ACCOUNT NEEDS ANGIE HAINES, ACCOUNT MANAGER 800-887-4307 EXT. 145 PHONE / 859-509-4031 MOBILE AngieH@locknet.com, panda@locknet.com					LOCKSET					
ADDITIONAL CONTACTS: THOMAS DOWNS, SALES MANAGER, Thomas.D@panda.com, 800-887-4307 x116 EDDIE ANDUEZA, DIR. ARCH. DOOR & HARDWARE SOL., eddiea@locknet.com, 859-432-2289					PASSAGE					
NO.	DOOR MATERIAL	SIZE	FRAME	FACE/EDGE	THK.	CORE	LITE	RATE	LOCKSET	REMARKS
01	ALUMINUM STOREFRONT	3'-0" X 7'-0"	ALUM.	DARK BRONZE ANODIZED ALUM.	1 3/4"	HOLLOW GLASS	-	-	S.F. PULL S.F. PUSH PANIC	
02	ALUMINUM STOREFRONT	3'-6" X 7'-0"	ALUM.	DARK BRONZE ANODIZED ALUM.	1 3/4"	HOLLOW GLASS	-	-	BUILT CONT. PANIC	
03	S.C. WOOD	3'-0" X 7'-0"	H. MTL.	PLASTIC LAMINATE PRE-FINISHED	1 3/4"	SOLID	-	-	FLOOR WALL	
04	NOT USED	-	-	-	-	-	-	-	THRESHOLD LATCH GUARD	
05	HOLLOW METAL	3'-6" X 7'-0"	H. MTL.	PAINTED	1 3/4"	INSUL.	-	-	DETACH ALUM. SILENCERS	
06	HOLLOW METAL	(2) 3'-0" X 7'-0"	H. MTL.	PAINTED	1 3/4"	INSUL.	-	-	KICKPLATE CLOSER	
07	HOLLOW METAL	3'-0" X 7'-0"	H. MTL.	PAINTED	1 3/4"	INSUL.	-	-		
08	ALUMINUM STOREFRONT	3'-0" X 7'-0"	ALUM.	DARK BRONZE ANODIZED ALUM.	1 3/4"	HOLLOW GLASS	-	-		
09	ALUM. STORE VESTIBULE	3'-0" X 7'-0"	ALUM.	DARK BRONZE ANODIZED ALUM.	1 3/4"	HOLLOW GLASS	-	-		
WALL SCHEDULE										
INSTALLED AND FURNISHED BY: G.C. UNLESS NOTED OTHERWISE										
NO.	DESCRIPTION									
01	3-5/8" 20GA. METAL STUD WALL W/ 1/2" TYPE "X" GYP. BOARD BOTH SIDES (SEE ARCHITECTURAL DETAILS & ELEVATIONS)									
02	3-5/8" 20GA. METAL STUD WALL W/ 1/2" TYPE "X" GYP. BOARD ON ONE SIDE (SEE ARCHITECTURAL DETAILS & ELEVATIONS)									
03	(2) 3-5/8" 20GA. METAL STUD WALLS W/ 1/2" TYPE "X" GYP. BOARD BOTH SIDES (SEE ARCHITECTURAL DETAILS & ELEVATIONS)									
04	3-5/8" 20GA. METAL STUD LOW WALL W/ 1/2" TYPE "X" GYP. BD BOTH SIDES. PROVIDE 3 1/2" KNEE-WALL BRACE/POST @ CORNERS AND @ 48" O.C.									
05	6" 20GA. METAL STUD WALL W/ 1/2" TYPE "X" GYP. BOARD BOTH SIDES (SEE ARCHITECTURAL DETAILS & ELEVATIONS)									
06	6" 20GA. METAL STUD WALL W/ 1/2" TYPE "X" GYP. BOARD ONE SIDE (SEE ARCHITECTURAL DETAILS & ELEVATIONS)									
07	6" 20GA. METAL STUD LOW WALL W/ 1/2" TYPE "X" GYP. BOARD BOTH SIDES. PROVIDE 3 1/2" KNEE-WALL BRACE/POST @ CORNERS AND @ 48" O.C.									
08	1 1/2" 20GA. HAT CHANNEL FURRING W/ 1/2" TYPE "X" GYP. BOARD ON ONE SIDE. REFER DETAILS FOR FURRING DISTANCE									
WALL PANEL SCHEDULE										
INSTALLED AND FURNISHED BY: G.C. UNLESS NOTED OTHERWISE										
NO.	MANUFACTURER	DESCRIPTION	MFG #	COLOR FINISH	REMARK					
WP1	CRANE COMPOSITES INC.	F.R.P. THICKNESS: .075	LB05.14	#636 (GRAY), S/M/S	CONTACT: LINDA RUSE 310.857.9036					
WP2	-	S.S. PANEL (22 GA)	-	BRUSHED FINISH	FURNISHED BY PX, INSTALLED BY G.C.					
WP3	-	S.S. PANEL (22 GA)	-	DIAMOND PATTERN FINISH	FURNISHED BY PX, INSTALLED BY G.C.					
WP4	NOT USED	-	-	-	-					
WP5	NOT USED	-	-	-	-					
WP6	NOT USED	-	-	-	-					
W101	NOT USED	-	-	-	-					
W102	WOLF GORDON	RED BAMBOO	-	-	CONTACT: CATHY DY 310.770.1165 cathy.dy@wolfgordon.com					
W103	WOLF GORDON	CLOUD WALLCOVERING	-	-	CONTACT: CATHY DY 310.770.1165 cathy.dy@wolfgordon.com					
SPECIAL SURFACE SCHEDULE										
INSTALLED AND FURNISHED BY: G.C. UNLESS NOTED OTHERWISE										
NO.	MANUFACTURER	PRODUCT	MFG #	STAIN / COLOR	FINISH	REMARK				
02-3	NOT USED	-	-	-	-	-				
02-6	NOT USED	-	-	-	-	-				
02-7	CORIAN	ARTIFICIAL QUARTZ	-	LONDON SKY	POLISHED	-				
02-9	DALTILE	ARTIFICIAL QUARTZ	-	BROADWAY BLACK	POLISHED	SERVICE COUNTER & DRINK STATION PROVIDED BY PX, INSTALLED BY G.C.				
INTERIOR PAINT SCHEDULE										
INSTALLED AND FURNISHED BY: G.C. UNLESS NOTED OTHERWISE										
NO.	MANUFACTURER	MFG #	COLOR	FINISH	REMARK					
PBA5	SHERWIN-WILLIAMS	SW 7065	ARGOS	PROMAR 200, ZERO VOC, LATEX SEMI-GLOSS	REAR SERVICE DOOR					
PB8	NOT USED	-	-	-	-					
P101	SHERWIN-WILLIAMS	SW 6252	ICE CUBE	PROMAR 200, ZERO VOC, LATEX EGG-SHELL	RESTROOM & RESTROOM VESTIBULE CEILING, FRONT & UNDERSIDE OF SERVICE LINE SOFFIT/BULKHEAD AND DINING RM. SOFFIT					
P102	NOT USED	-	-	-	-					
P103	NOT USED	-	-	-	-					
P104	SHERWIN-WILLIAMS	SW 2850	CHELSEA GRAY	PROMAR 200, ZERO VOC, LATEX EGG-SHELL	DINING RM. WALLS, RESTROOM VESTIBULE WALLS					
P105	NOT USED	-	-	-	-					
P106	SHERWIN-WILLIAMS	SW 7020	BLACK FOX	DTM ACRYLIC GLOSS, LOW VOC	RESTROOM DOOR FRAMES & LCD NICHE (BACK WALL)					
P205	SHERWIN-WILLIAMS	SW 7675	SEALSKIN	PROMAR 200, ZERO VOC, LATEX EGG-SHELL	FRONT & BACK & UNDERSIDE FACES OF MENU BOARD					

### WALL LEGEND

NEW EXTERIOR WALL

NEW EXTERIOR WALL  
FRAMED WITH  
STRUCTURAL STEEL STUDS

NEW INTERIOR WALL (FULL HT.)

NEW INTERIOR WALL (LOW WALL  
- REF. ELEV. & DETAILS)

WALK-IN BOX PANEL

NOTE: THE FOLLOWING STAINLESS STEEL PROVIDED BY PX-INSTALLED BY G.C.  
1. PANEL DIVIDERS AT WP3  
2. INSIDE CORNER AT WP3 TO WP2  
3. FLASHING AT TOP OF BASE WP3  
4. WP2 PIECE AT LENGTH OF WALL

NOTE: THE FOLLOWING STAINLESS STEEL PROVIDED BY G.C.-INSTALLED BY G.C.  
5. INSTALL 18 GA STAINLESS STEEL CORNER GUARD & WALL CAP INSIDE KITCHEN

18 GA. STAINLESS STEEL CORNER GUARD - FULL HT.

18 GA. STAINLESS STEEL CORNER GUARD - 4'-0" HIGH

18 GA. STAINLESS STEEL CORNER GUARD/FRAME - ALL AROUND PERIMETER OF OPENING - FRAME TO BE WELDED WITH MITERED CORNERS TO FORM SINGLE UNIT.

18 GA. STAINLESS STEEL WALL CAP

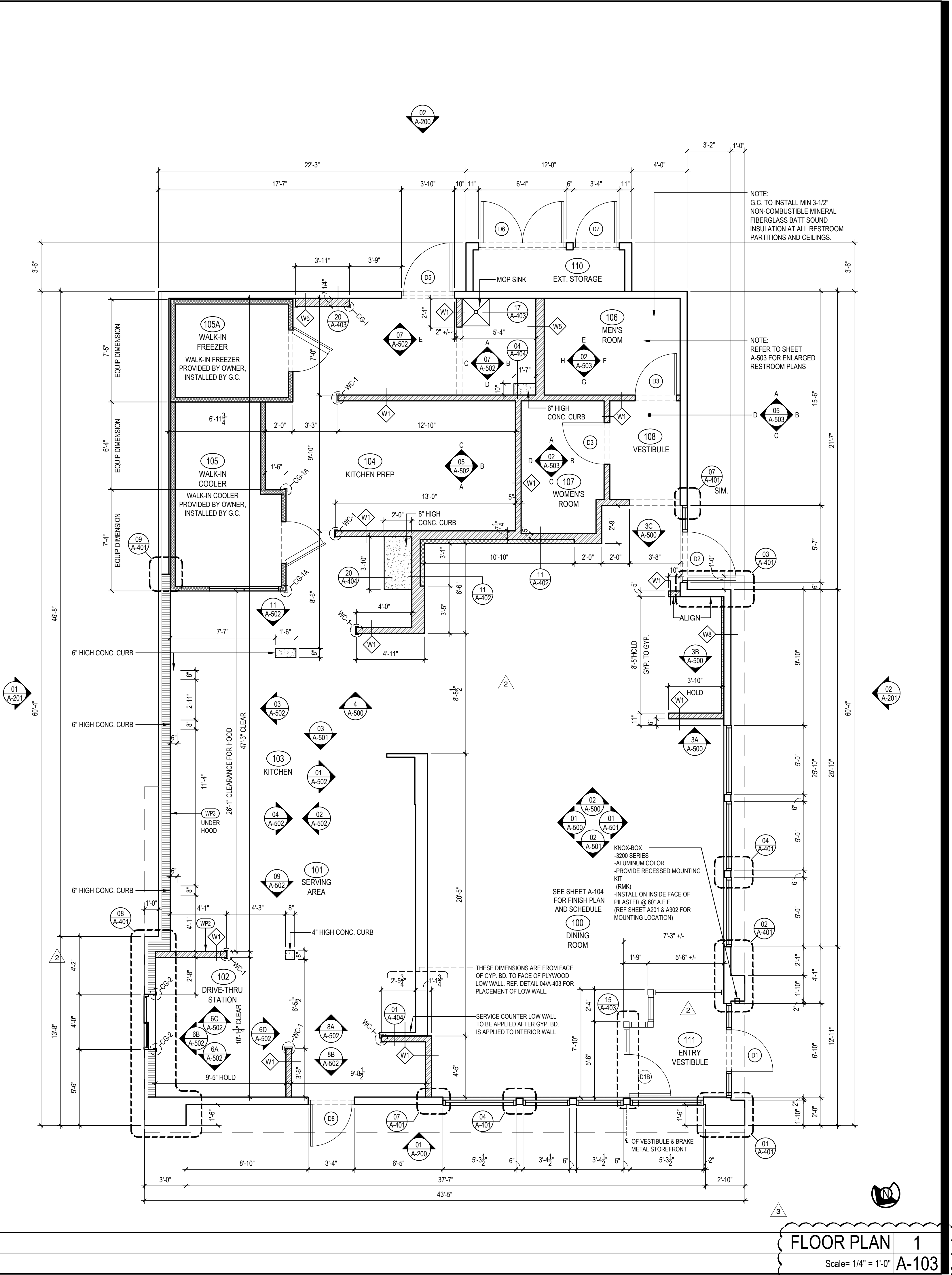
ALL OTHER STAINLESS STEEL BY G.C.

NOTE!!!!!!:

\*ALL INTERIOR DIMENSIONS ARE TO FACE OF GYPSUM BOARD

NOTE:

CONTRACTOR TO NOTIFY 3rd PARTY VENDOR, PER THE VENDOR LIST, FOR WALL PRE-TREAT BEFORE CLOSING WALLS



FLOOR PLAN 1  
Scale= 1/4" = 1'-0"

PANDA EXPRESS, INC.  
1683 Walnut Grove Ave.  
Rosemead, California  
91770  
Telephone: 626.799.9898  
Facsimile: 626.372.8288

All ideas, designs, arrangement and plans indicated or represented by this drawing are the property of Panda Express Inc. and were created for use on this specific project. None of these ideas, designs, arrangements or plans may be used by or disclosed to any person, firm, or corporation without the written permission of Panda Express Inc.

REVISIONS:

1	SOLUTION F 2	09-30-21
2	OWNER REVISIONS	01-27-22

ISSUE DATE:

1	ISSUE FOR PERMIT	01-29-21
2	ISSUE FOR BID	04-30-21
3	ISSUE FOR BID 2	11-02-21
4	ISSUE FOR BID (DT)	02-04-22

DRAWN BY: AE

PANDA PROJECT #: D8164  
PANDA STORE #: -  
ARCH PROJECT #: 261-321

idGROUP

CARRY D. MCLEAN  
Lic. No. 040116070  
ARCHITECT

11-02-21

PANDA EXPRESS  
TRUE WARM & WELCOME  
JEFFERSON AVE. & MORRIS DR.  
NEWPORT NEWS, VA 23605

A-103  
FLOOR PLAN

TRUE WARM & WELCOME 2300 R6

ISSUE FOR PERMIT 11-02-21