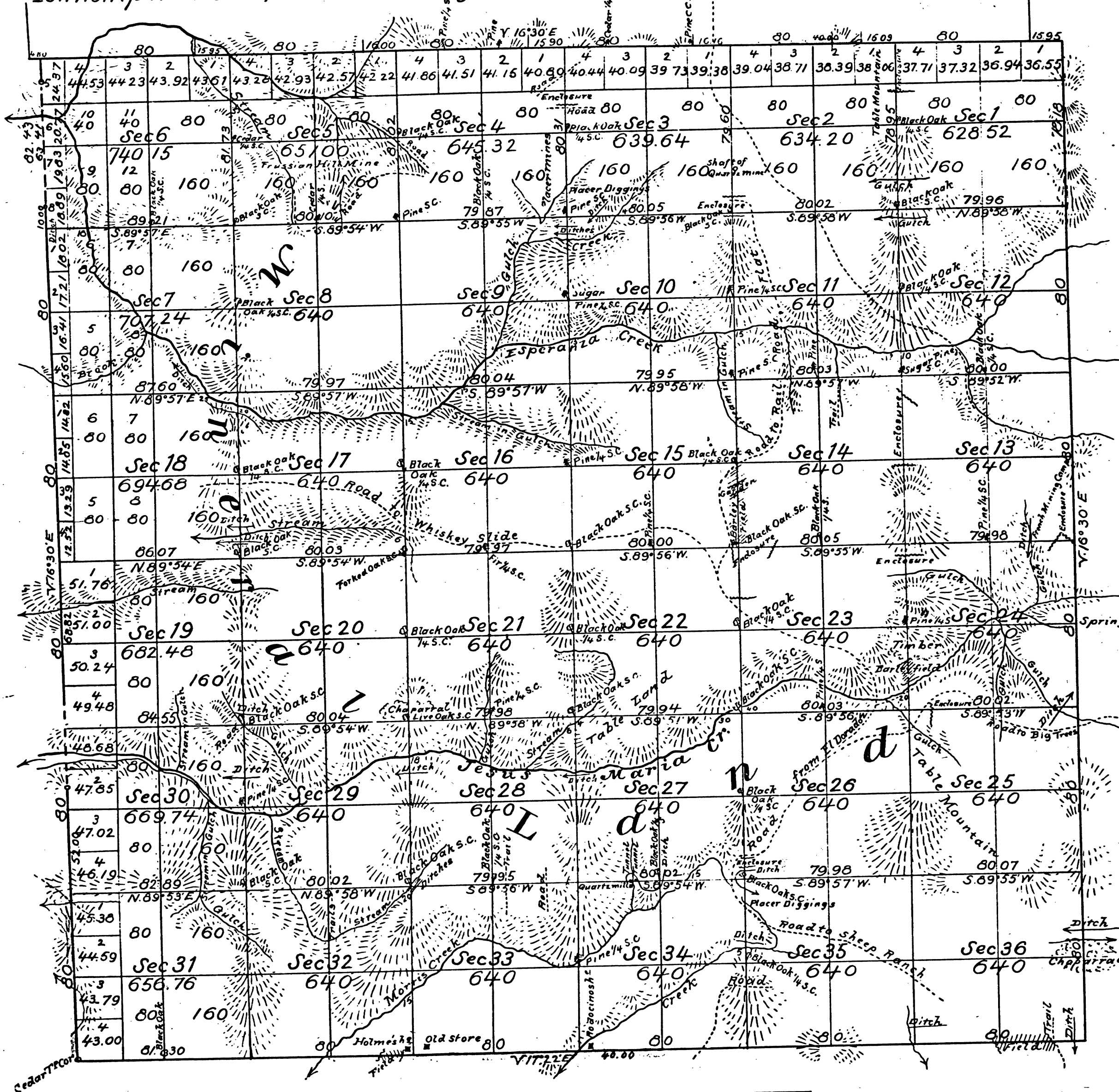


Township N°5 North,

Range N°13 East

Mount Diablo Meridian.



E.H.H.P.
J.B.S.J.

Aggregate Area of Public Land

23,349.73 Acres.

Variation reported by Tolman, 17° East.

Filed in District Land Office, March 30, 1874.

Surveys Designated	By whom Surveyed	Date of Contract	Amount of Surveys	When surveyed
Township lines	Heming Arnyx	Sept. 30 th 1858		1859
line colored blue (resurveyed)	H.F. Terry	Nov. 2 nd 1869		1869 - 1870
red		12 th 1870		1870
green		January 12 th 1871		1871
Section lines	G.B. Tolman	August 4 th 1873	60 mi ² 32 ac ² 00 lks	Nov. 29 th 1873

The above Map of Township N°5 North, Range N°13 East, Mount Diablo Meridian, is strictly conformable to the field notes of the surveys thereof on file in this Office, which have been examined and approved.
Surveyor General's Office,
San Francisco, California,
February 26th 1874.

DEPARTMENT OF THE INTERIOR
GENERAL LAND OFFICE
Washington, D. C. *Sept. 25, 1907*
I hereby certify that this is a true copy
of the plat of official survey of the lands
to which it relates, on file in this office.

Alvin J. ...
Recorder, General Land Office.

T 5 N R 13 E MD

41 437