

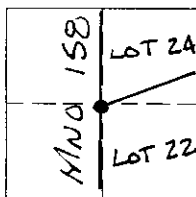
CORNER RECORD

DPD-3011 (Rev. 9/97) CT# 7541-4548-0

2S 26-14-29

Document Number

City of

County of MONO, CaliforniaBrief Legal Description POSSIBLE NW CORNER LOT 22, SECTION 14, T. 2 S., R. 26 E., M.D.M.**CORNER TYPE**Government Corner ☐Control ☐Meander ☐Property ☐Rancho ☐Other ☒

Date of Survey

3-24-03**COORDINATES (Optional)**N. 643107.985E. 2125577.888Zone 3

NAD27

NAD83 ☒NAD83 Epoch 1991.35

Elevation

Vert. Datum: NGVD29

NAVD88

Meas. Units: Metric ☒Imperial ☐**Corner -**Left as found ☒Found and tagged ☐Established ☐Reestablished ☐Rebuilt ☐

Identification and type of corner found: Evidence used to identify or procedure used to establish or reestablish the corner:

FOUND 32mm (1 1/4") O.D.I.P. WITH "DN CA DIV HWYS" PLASTIC
PLUG, DOWN 0.13M. IN GOOD CONDITION.

A description of the physical condition of the monument as found and as set or reset:

SURVEYOR'S STATEMENT

This Corner Record was prepared by me or under my direction in conformance with

the Land Surveyors' Act on APRIL 16, 2003

Signed

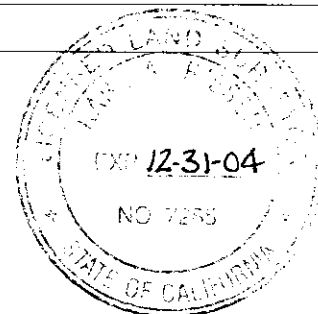
Karl A. Riesen

P.L.S. or R.C.E. Number

7285

For the State of California

Department of Transportation

**COUNTY SURVEYOR'S STATEMENT**This Corner Record was received 04/14, 2005 and examinedand filed 06/30, 2005

Signed

John S. Parrish

P.L.S. or R.C.E. Number

5050

Title

Mono County Surveyor

County Surveyor's Comment

