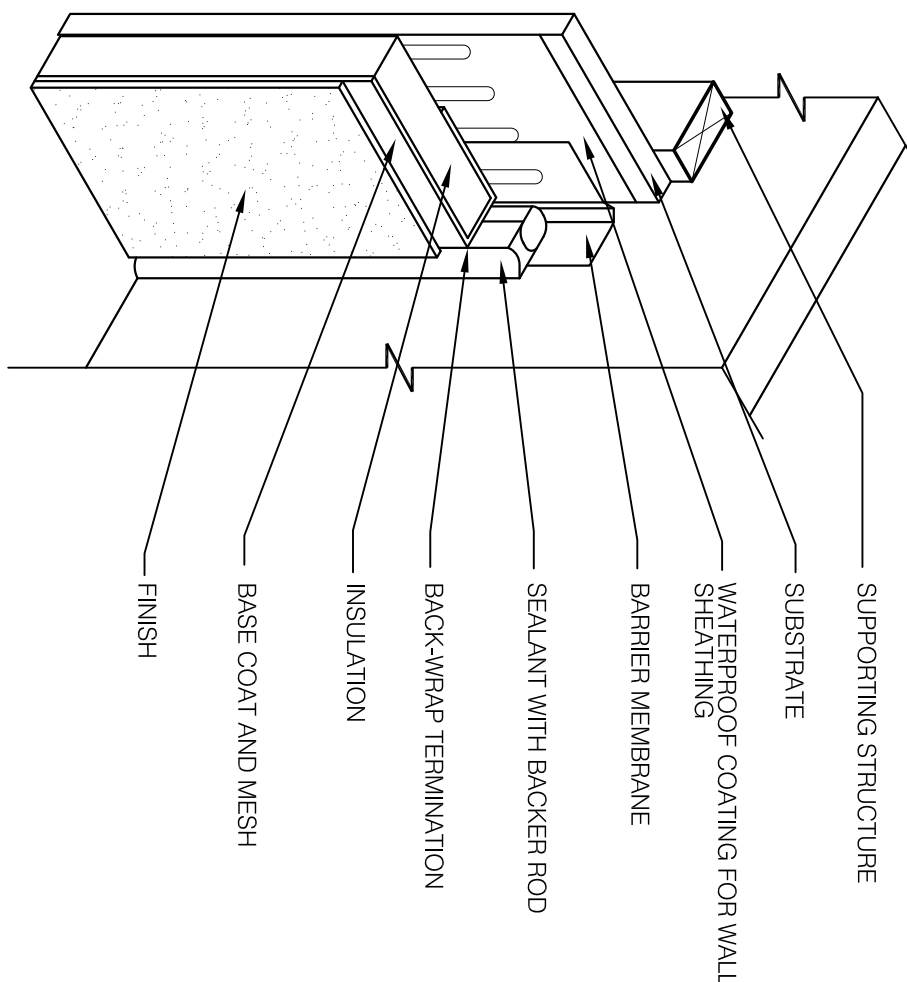


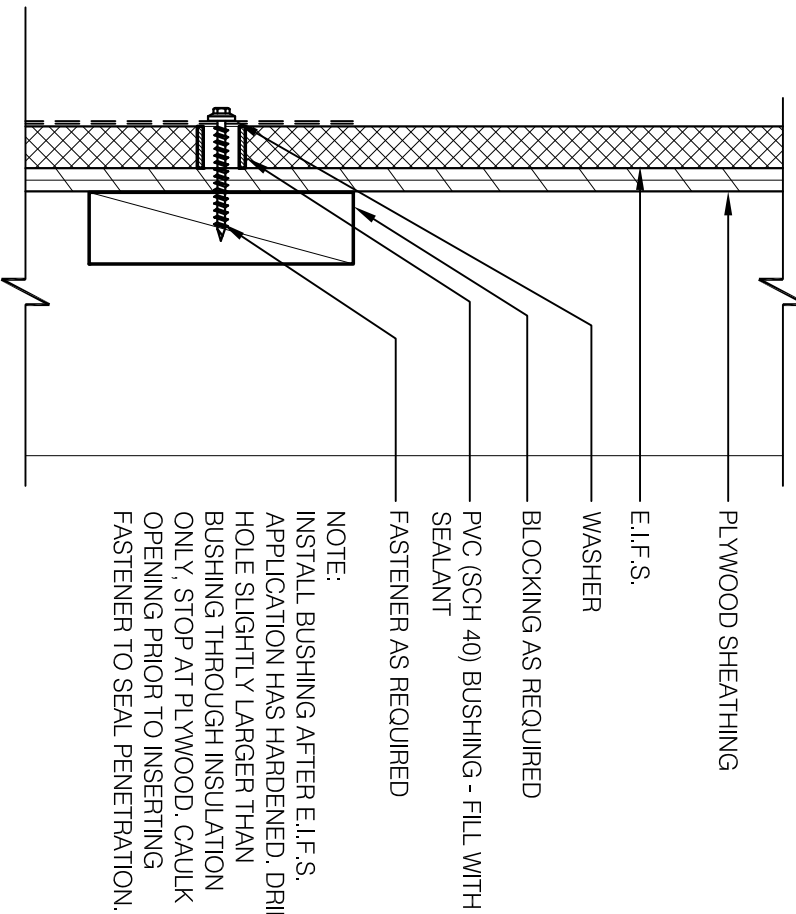
YAW350

**TYP. EIFS. TRIM HIGH-IMPACT** N.T.S. **2**



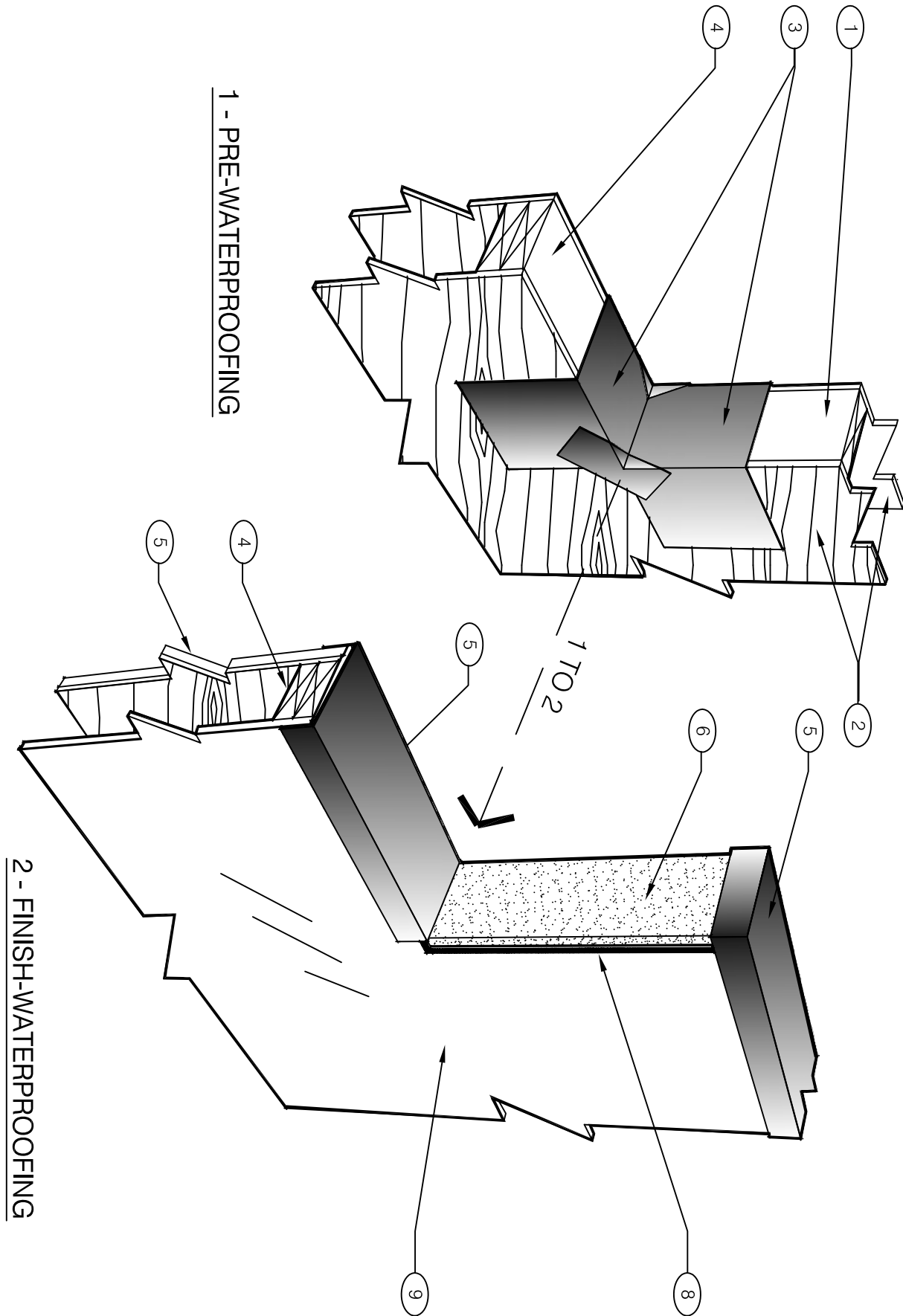
YAW050

**TYP. EIFS. @ INSIDE CORNER** N.T.S. **6**



YAW323

**CONNECTION THRU EIFS** 3" = 1'-0" **9**

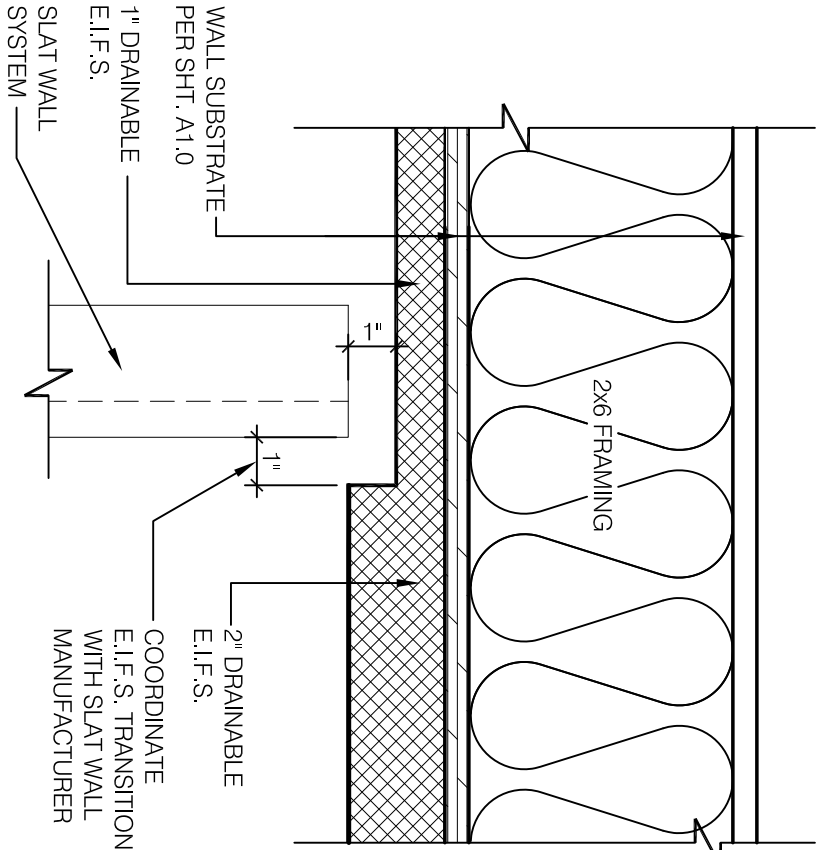


**NOTES**

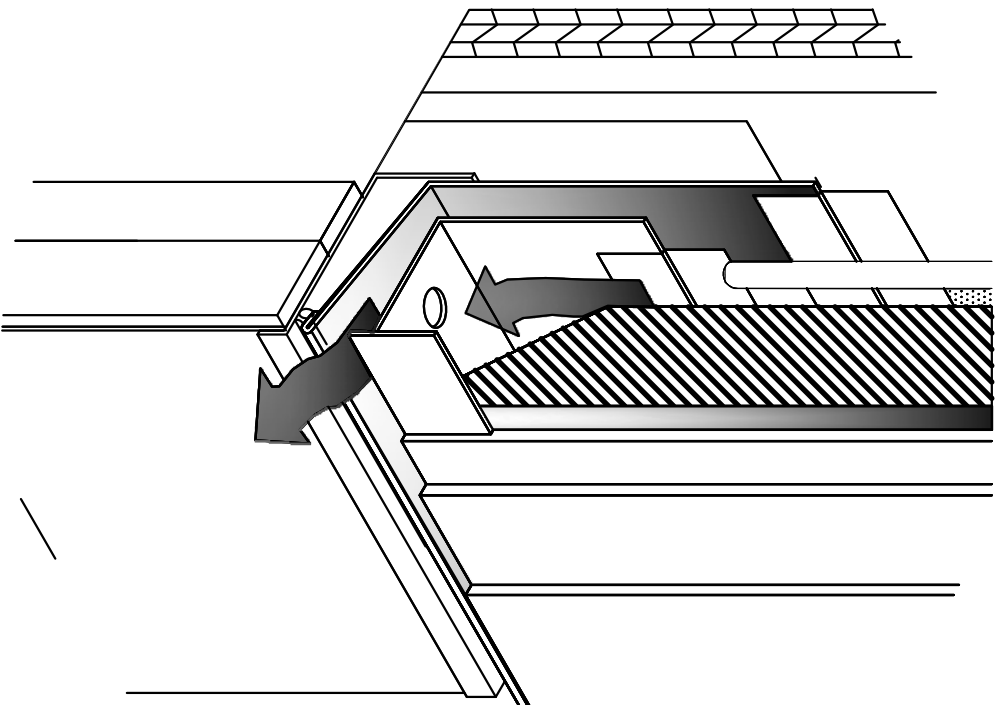
- 1 2X WOOD STUDS
- 2 PLYWOOD SUBSTRATE FOR EXTERIOR WALLS
- 3 FLASHING TAPE AT ALL VERTICAL PARAPET TRANSITIONS. EXTEND TAPE 6" BEYOND TRANSITION AND OVERLAP 6" WITH ADJACENT FLASHING. TAPE WITH ANGLED TAPE AS SHOWN TO INSURE FULL COVERAGE AT CORNERS
- 4 DOUBLE 2X TOP PLATE.
- 5 PAINTED 24 GAUGE PARAPET COPING. SLOPE 1/4" TOWARDS ROOF WITH FIBER GANT STRIPS UNDER COPING. LAP FRONT AND BACK EDGE AT VERTICAL PARAPET TRANSITION.
- 6 WRAP 1" THICK EIFS ONTO VERTICAL FACE OF PARAPET TRANSITION
- 7 EIFS FINISH ON OUTER SURFACE OF EXTERIOR WALL. THICKNESS PER THE EXTERIOR ELEVATIONS ON SHEET A4.0
- 8 TERMINATION BAR AT VERTICAL TRANSITION OF EIFS AND MEMBRANE ROOFING. SEAL VERTICAL GAP BETWEEN TERMINATION BAR AND EIFS PER ROOFING MANUFACTURER SPECIFICATIONS.
- 9 PVC ROOFING MEMBRANE ON BACKSIDE OF PARAPET.

**IMPORTANT: ONLY FASTEN PARAPET COPING ALONG THE FRONT AND BACK VERTICAL EDGE. NEVER ON TOP OF COPING.**

**PARAPET CAP & TRANSITION** N.T.S. **14**

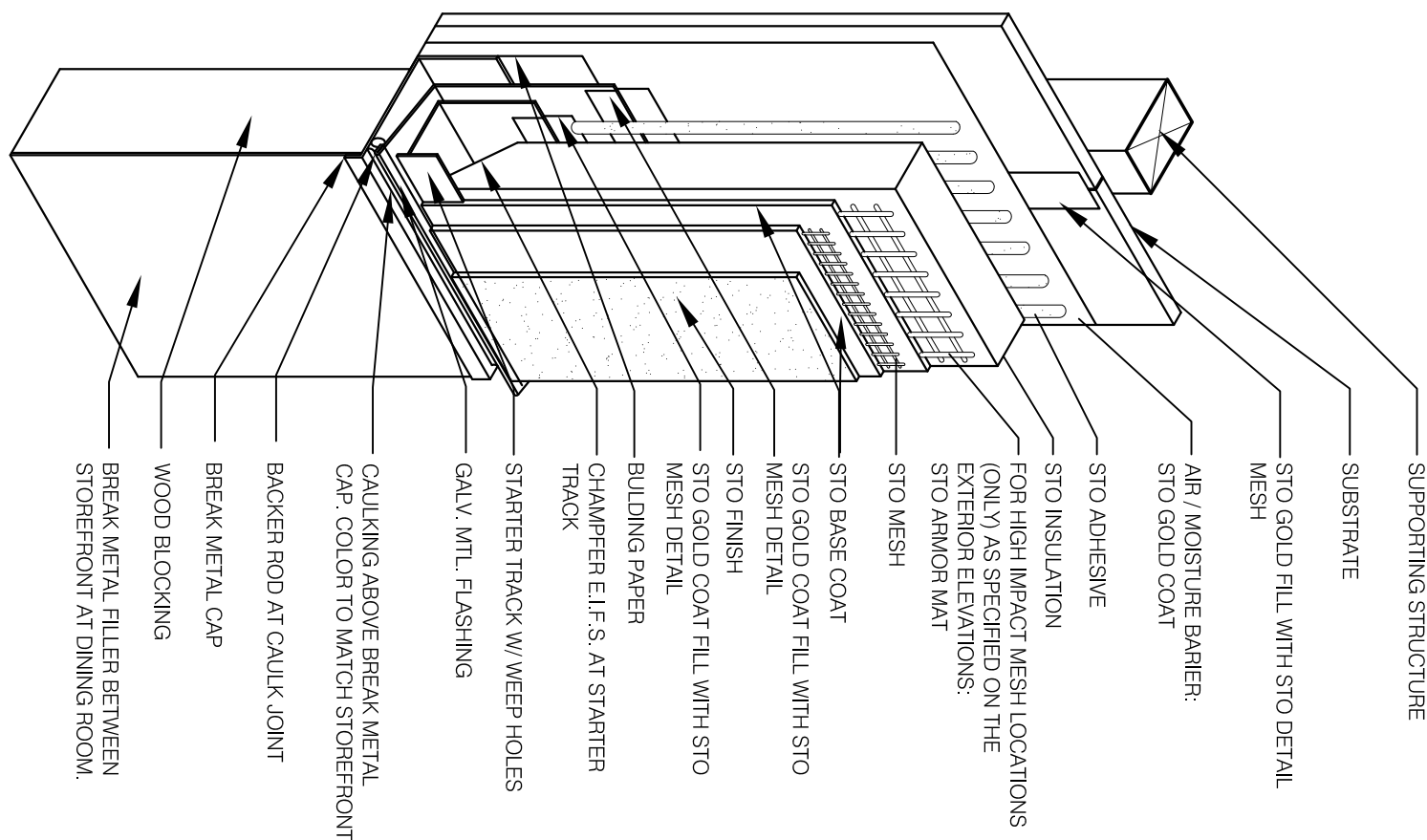


**EIFS. TRANSITION @ SLAT WALL** 3" = 1'-0" **19**

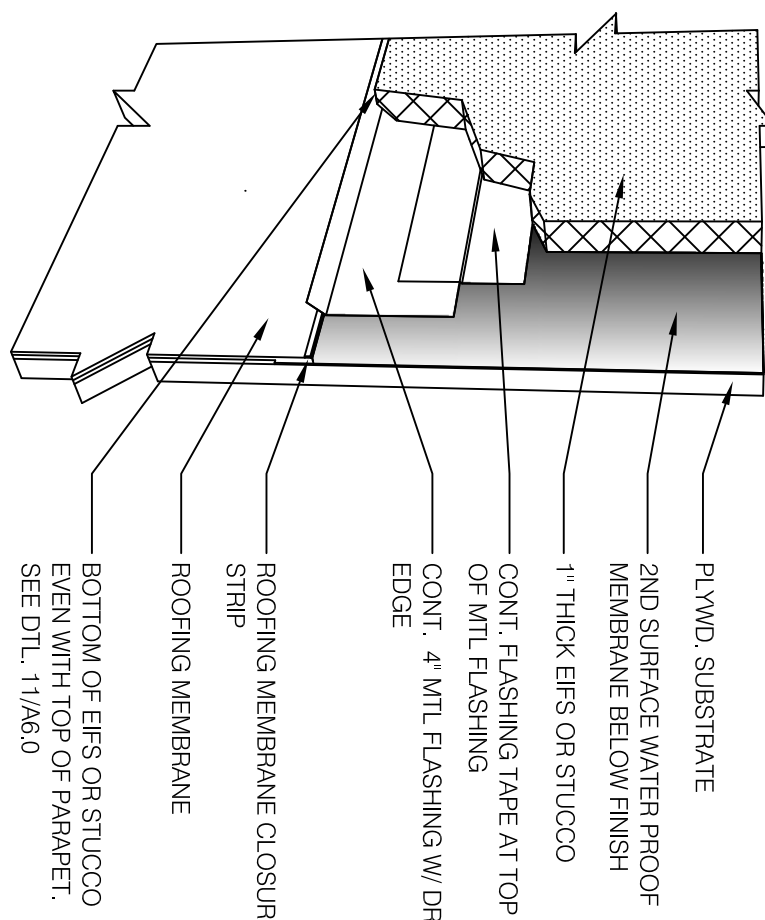


**NOT AN OPTION: Do not caulk below EIFS starter track edge & galv. mtl. flashing to allow for drainage behind EIFS.**

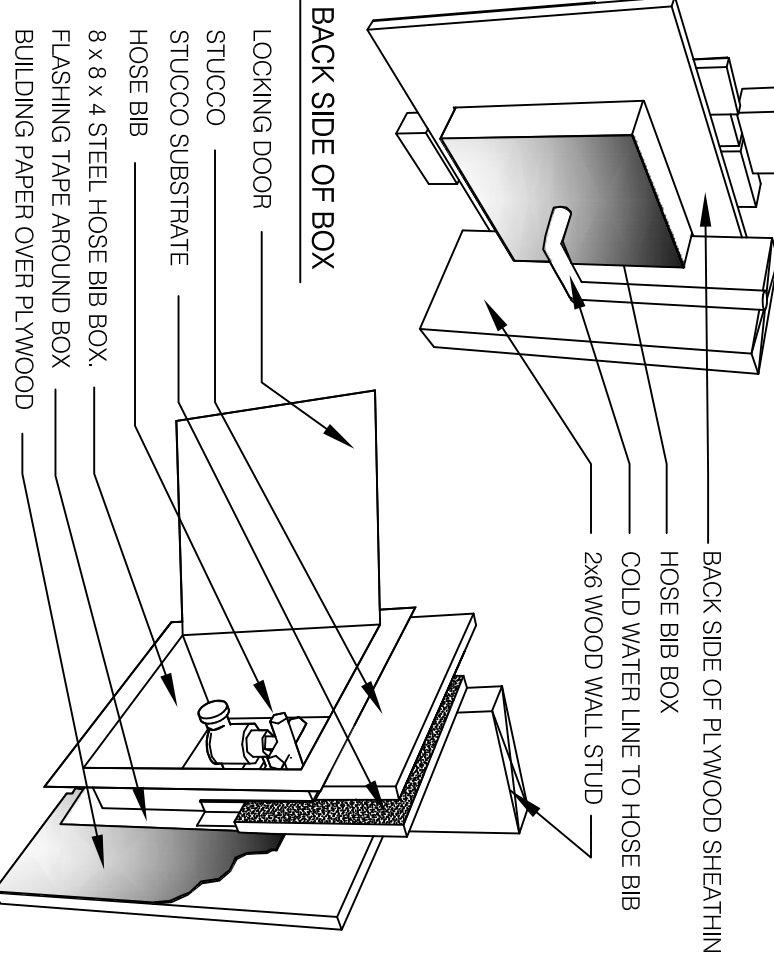
NOTE: EIFS. DETAILS ARE INTENDED TO BE GENERIC. MANUFACTURERS DETAILS AND RECOMMENDATIONS SHOULD BE FOLLOWED. REFER TO SECTION 07240 OF THE SPECIFICATIONS MANUAL.



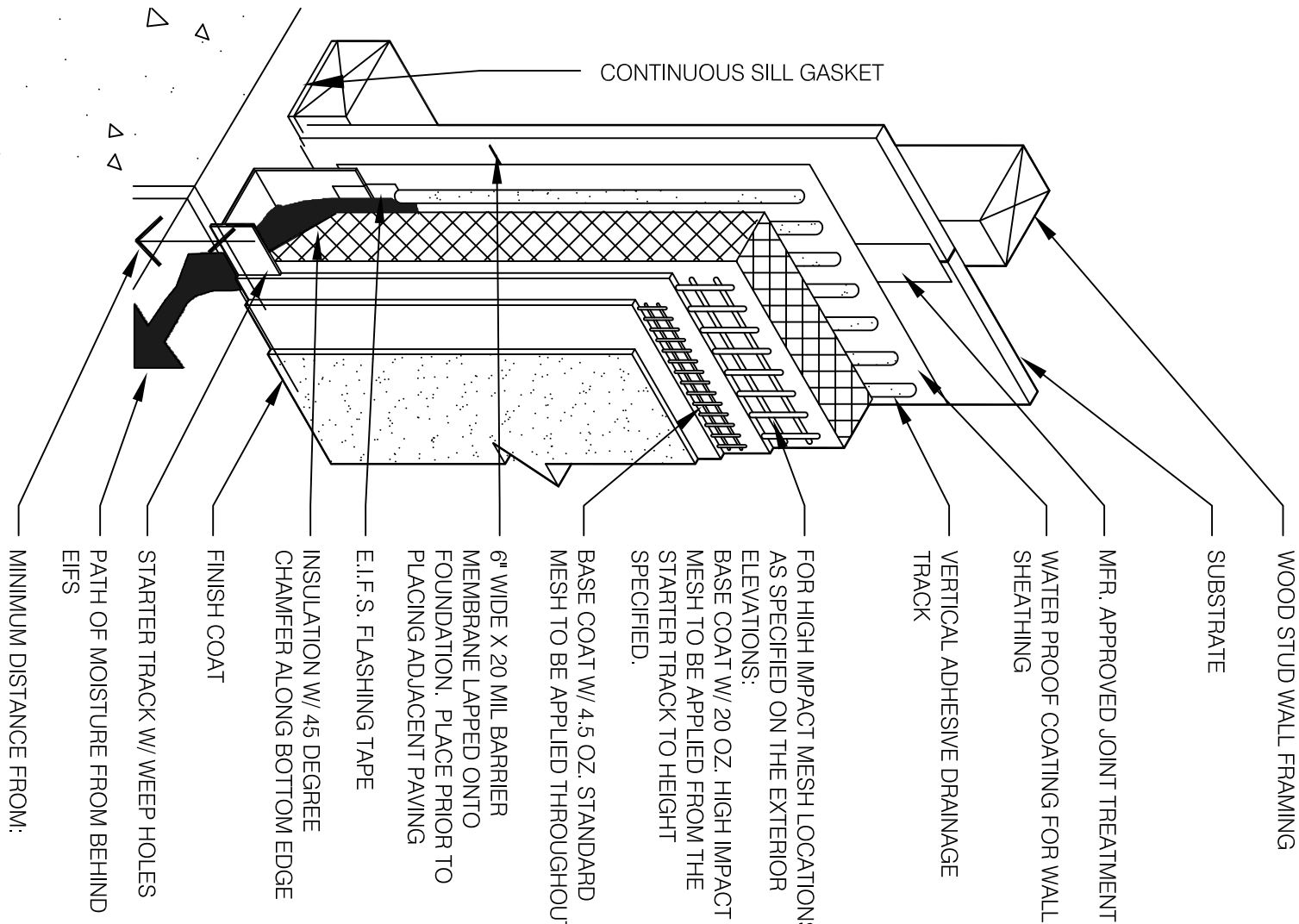
**EIFS. TO BASE FLASHING** N.T.S. **7**



NOTE: HOSE BIB SHALL BE ACQ/DON-ARIB OR EQUAL



**HOSE BIB BOX** N.T.S. **8**



YAW026

**TYP. EIFS. BASE TERMINATION** N.T.S. **4**

**EIFS. V-GROOVE** 6" = 1'-0" **20**

**EIFS. FLASHING AT TOP OF BREAK METAL** N.T.S. **12**