

EXHAUST FAN INFORMATION - Job#2788398

FAN UNIT NO.	TAG	FAN UNIT MODEL #	CFM	ESP.	RPM	H.P.	B.H.P.	Ø	VOLT	FLA	WEIGHT (LBS.)	SONES
1	EF-1	DUS0HFA	1200	0.750	1320	0.500	0.2560	1	115	8.4	65	14.3
2	EF-2	DR10HFA	350	0.250	1111	0.060	0.0270	1	115	1.1	33	2.8

FAN OPTIONS

FAN UNIT NO.	TAG	OPTION (Qty. - Descr.)
1	EF-1	1 - Grease Box

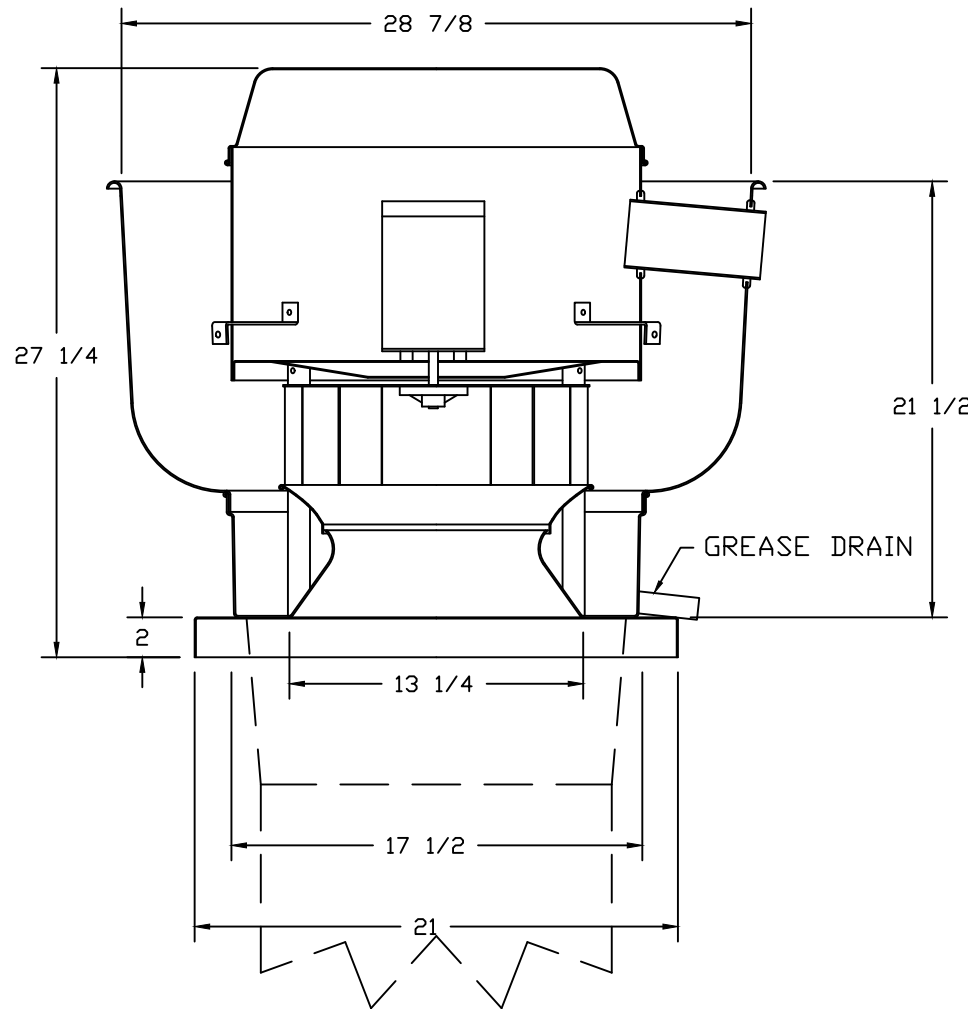
FAN ACCESSORIES

FAN UNIT NO.	TAG	EXHAUST				SUPPLY			
		GREASE CUP	GRAVITY DAMPER	WALL MOUNT	SIDE DISCHARGE	GRAVITY DAMPER	MOTORIZED DAMPER	WALL MOUNT	
1	EF-1	YES							
2	EF-2								

CURB ASSEMBLIES

NO.	DN FAN	WEIGHT	ITEM	SIZE
1	# 1	31 LBS	Curb	19.500"W x 19.500"L x 20.000"H Vented Hinged
2	# 2	16 LBS	Curb	17.500"W x 17.500"L x 12.000"H

FAN #1 DUS0HFA - EXHAUST FAN (EF-1)



FEATURES:

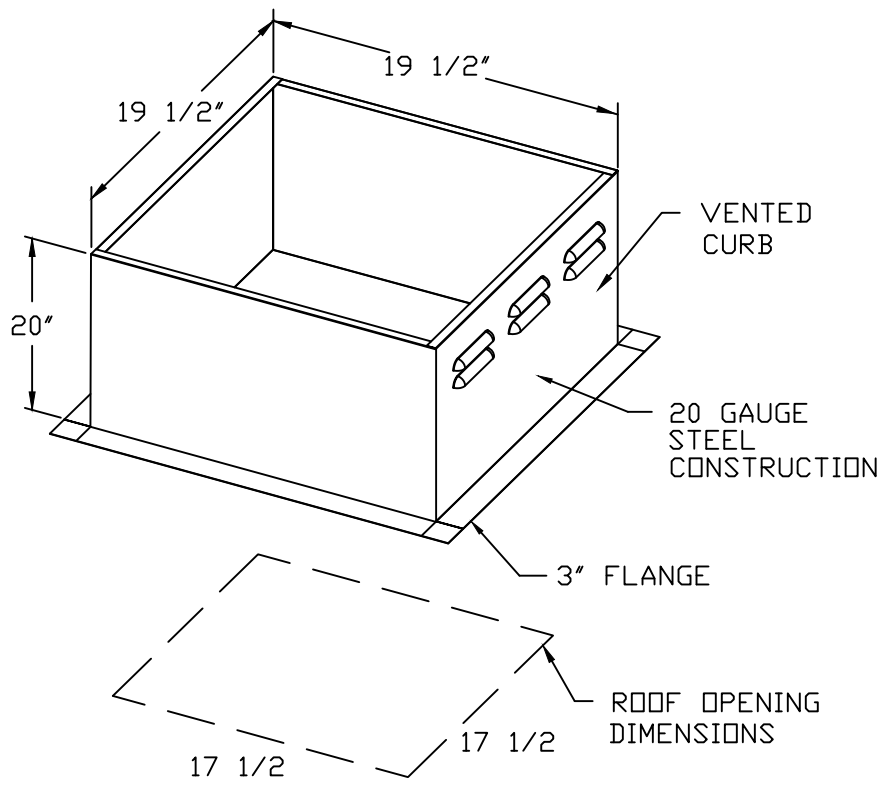
- DIRECT DRIVE CONSTRUCTION (NO BELTS/PULLEYS)
- RESTAURANT MODEL
- UL705 AND UL762
- VARIABLE SPEED CONTROL
- INTERNAL WIRING
- WEATHERPROOF DISCONNECT
- THERMAL OVERLOAD PROTECTION (SINGLE PHASE)
- HIGH HEAT OPERATION 300°F (149°C)
- GREASE CLASSIFICATION TESTING

NORMAL TEMPERATURE TEST
EXHAUST FAN MUST OPERATE CONTINUOUSLY WHILE EXHAUSTING AIR AT 300°F (149°C) UNTIL ALL FAN PARTS HAVE REACHED THERMAL EQUILIBRIUM, AND WITHOUT ANY DETERIORATING EFFECTS TO THE FAN WHICH WOULD CAUSE UNSAFE OPERATION.

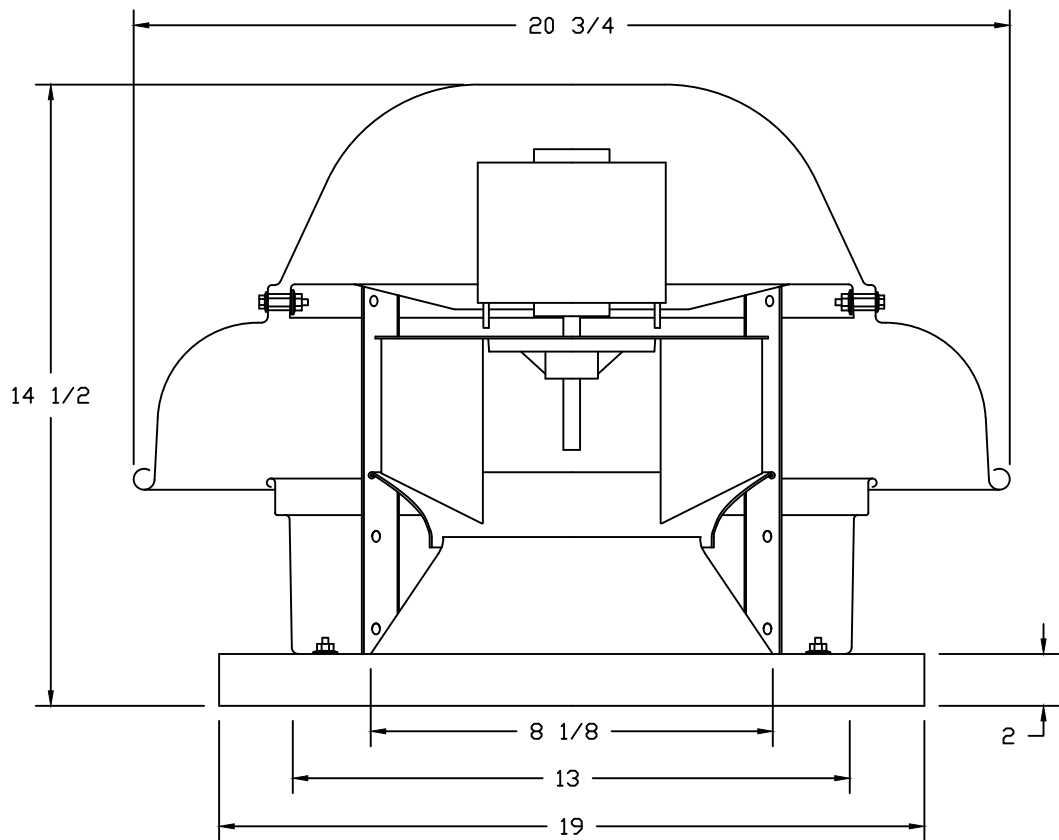
ABNORMAL FLARE-UP TEST
EXHAUST FAN MUST OPERATE CONTINUOUSLY WHILE EXHAUSTING BURNING GREASE VAPORS AT 600°F (316°C) FOR A PERIOD OF 15 MINUTES WITHOUT THE FAN BECOMING DAMAGED TO ANY EXTENT THAT COULD CAUSE AN UNSAFE CONDITION.

OPTIONS

GREASE BOX

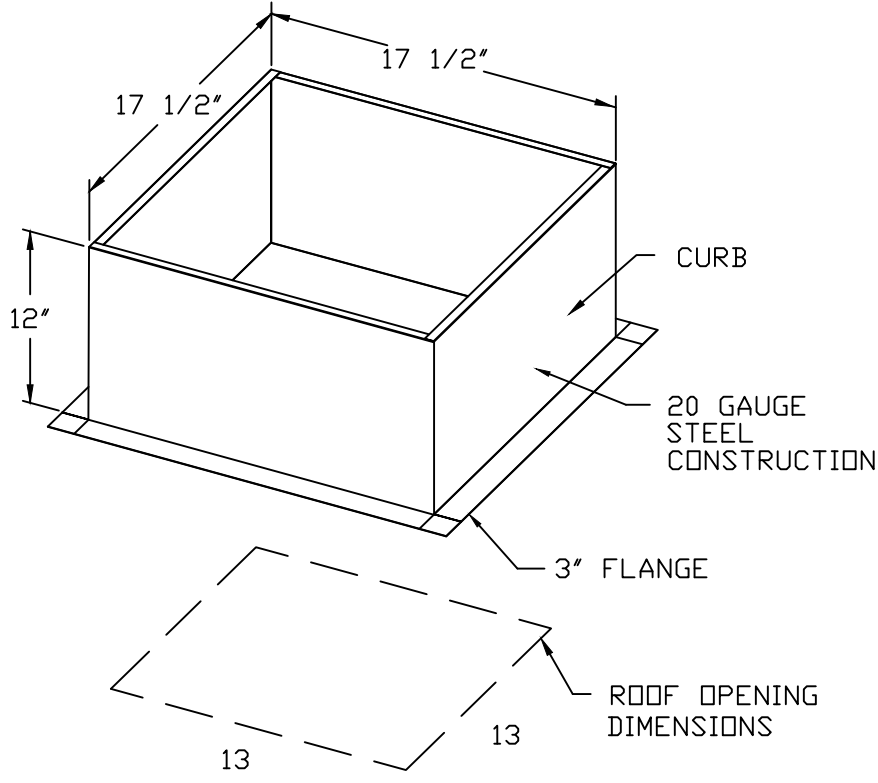


FAN #2 DR10HFA - EXHAUST FAN (EF-2)



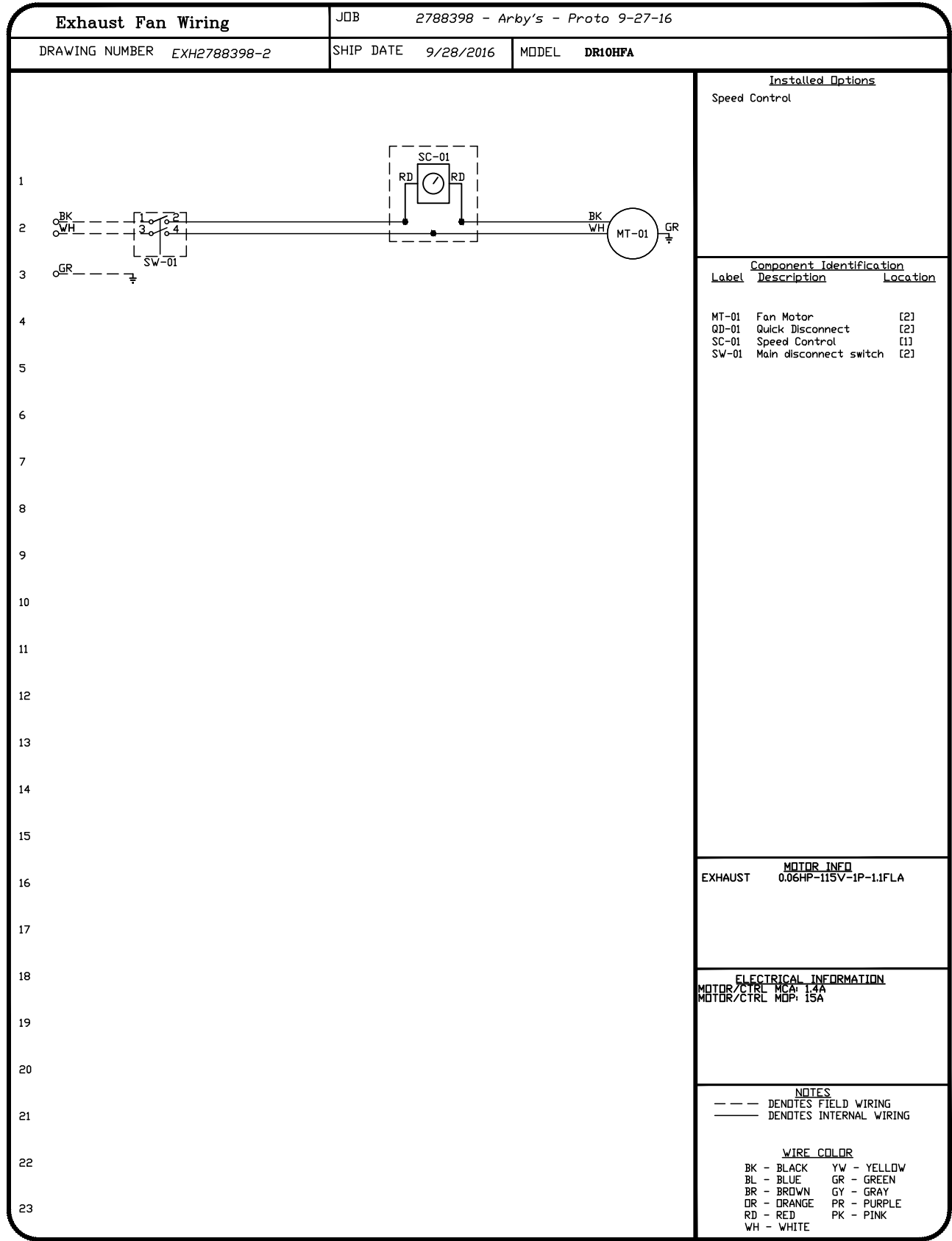
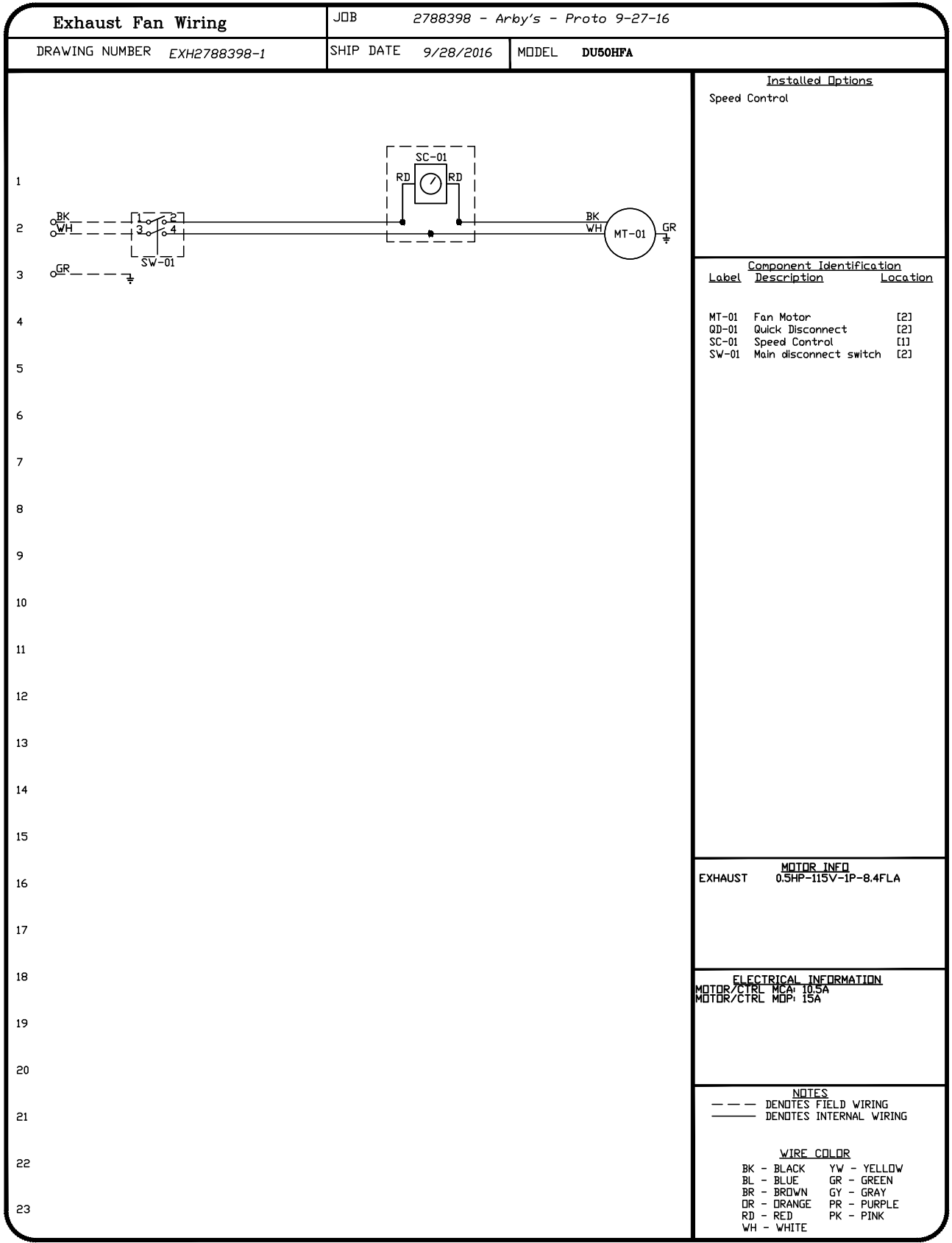
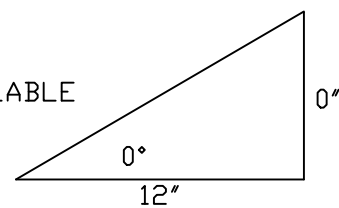
FEATURES:

- DIRECT DRIVE CONSTRUCTION (NO BELTS/PULLEYS)
- ROOF MOUNTED FANS
- UL705
- SAFETY DISCONNECT
- STANDARD BIRD SCREEN
- SPEED CONTROL



PITCHED CURBS ARE AVAILABLE FOR PITCHED ROOFS.

SPECIFY PITCH:
EXAMPLE: 7/12 PITCH = 30° SLOPE



REVISIONS

DESCRIPTION	DATE:
Δ	
Δ	
Δ	
Δ	

Atlanta Office

1395 S. Marietta Pkwy, Bldg 100, Ste 105, Marietta, GA 30067 PHONE: (800) 862-8626 FAX: (919) 227-5964 EMAIL: reg50@captivaire.com

Arby's

DATE: 9/28/2016

DWG.#: 2788398

DRAWN BY: WAH-50

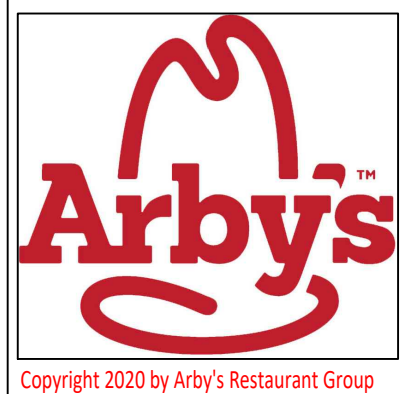
SCALE: 3/4" = 1'-0"

MASTER DRAWING

SHEET NO. 2



PROPRIETARY INFORMATION NOTICE:
THESE PROTOTYPICAL DOCUMENTS MAY REQUIRE REVISIONS TO CONFORM TO LOCAL, STATE, AND FEDERAL CODES, ORDINANCES OR OTHER CONDITIONS. THE DESIGN CONCEPTS EMBODIED IN THESE DOCUMENTS ARE SPECIFICALLY FOR THIS PROJECT. INFORMATION CONTAINED HEREIN REMAINS THE SOLE PROPERTY OF ARBY'S RESTAURANT GROUP, IS CONFIDENTIAL AND PROPRIETARY AND IS NOT TO BE COPIED, REPRODUCED, DISCLOSED OR OTHERWISE TRANSFERRED TO OTHER PARTIES IN ANY FORM WHATSOEVER WITHOUT THE EXPRESS WRITTEN CONSENT OF ARBY'S RESTAURANT GROUP.



ARBY'S RESTAURANT GROUP
INSPIRE DUAL REGULAR 40 - STANDARD
1632 AR-25 BYPASS
HEBER SPRINGS, AR 72543
FOR
RB AMERICAN GROUP, LLC
6200 OAK TREE BLVD., SUITE 250, INDEPENDENCE, OHIO 44131

PROJECT NUMBER:

ISSUE	DATE
PRELIMINARY	
PERMIT	
BID	
REVISION	

CAPTIVEAIRE DRAWING

SHEET:

H1.2