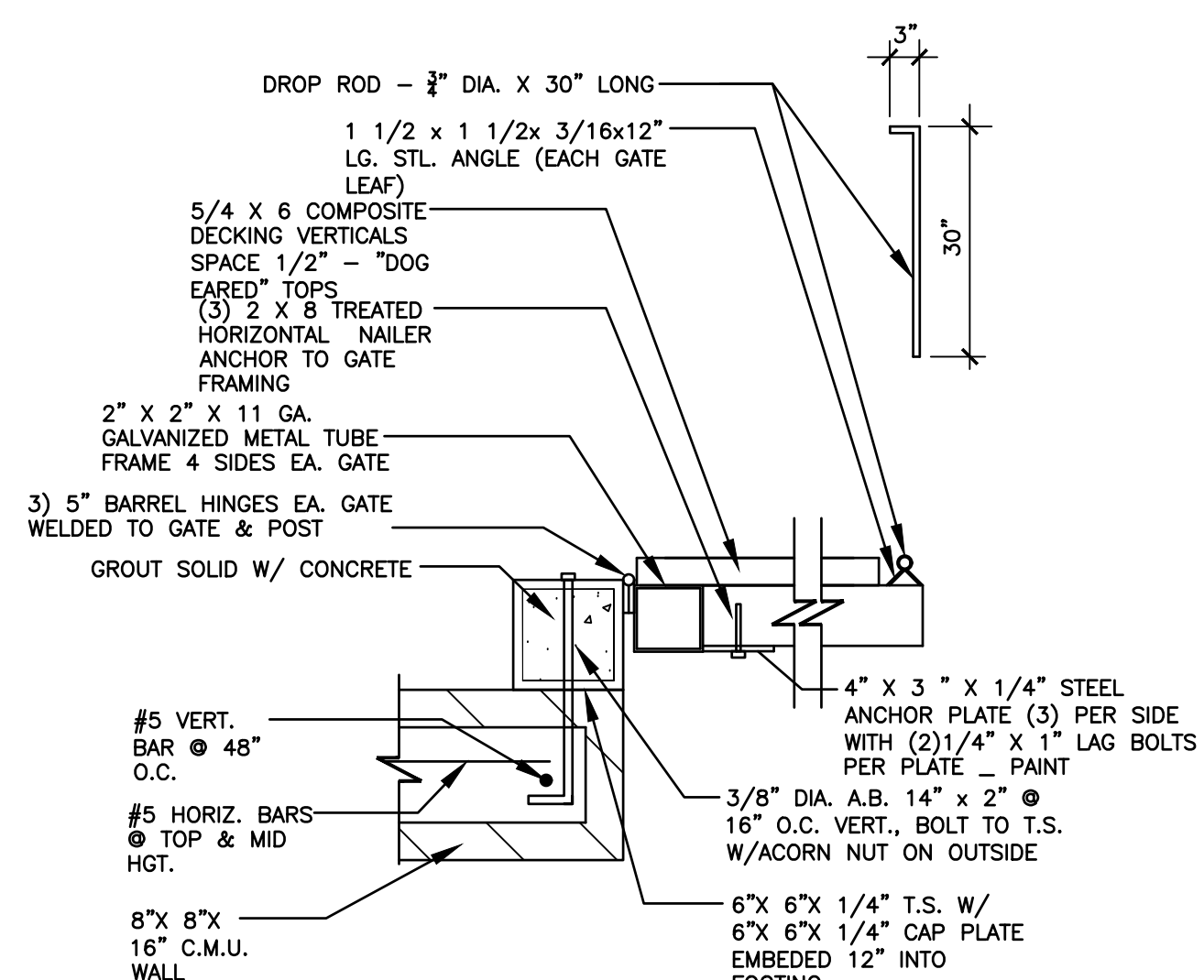


1. CONTRACTOR TO PROVIDE BOLLARD COVERS FOR ALL BOLLARDS ONSITE. STREET SMART; YELLOW; OR APPROVED EQUAL.

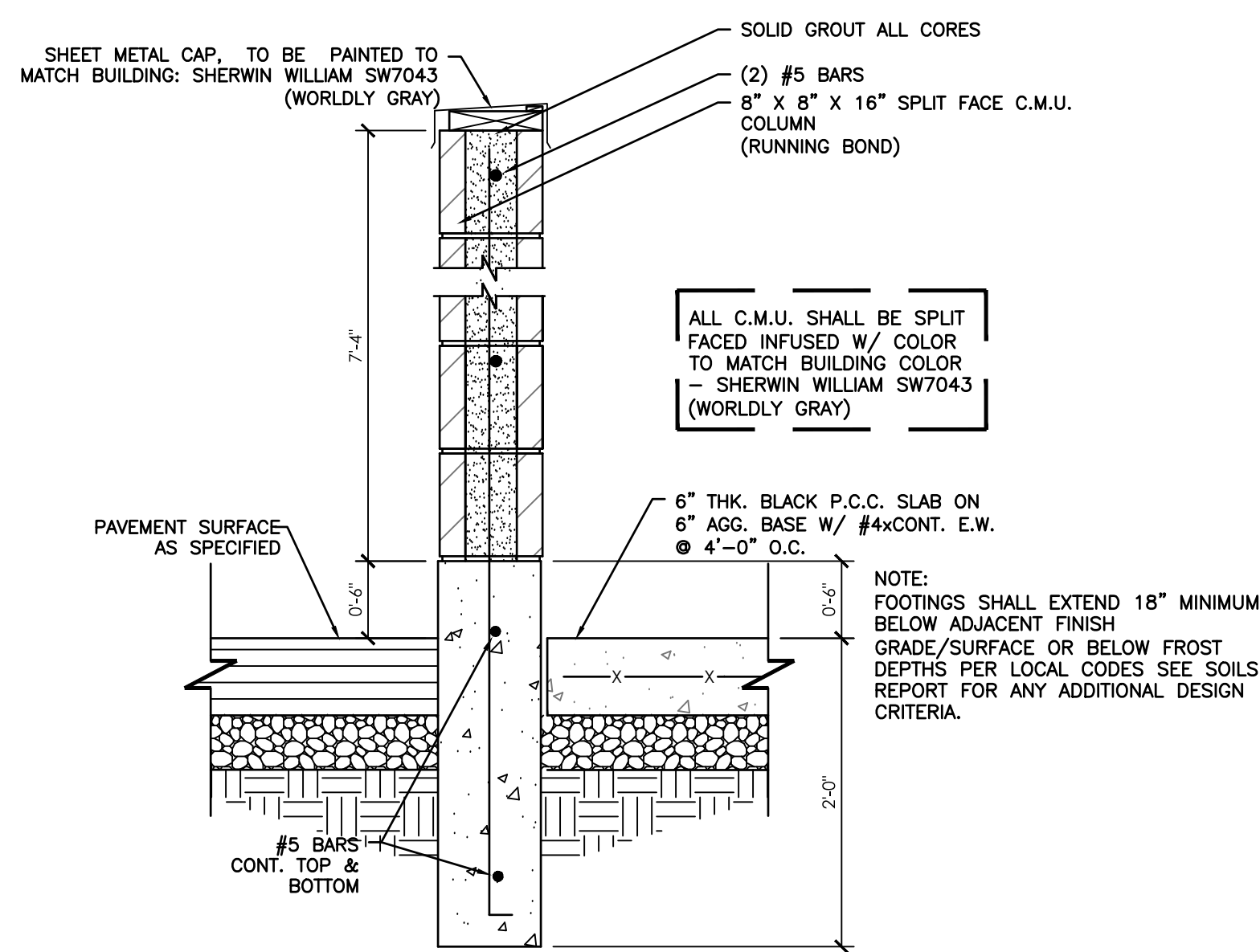
DETAIL 8 BOLLARD

NOT TO SCALE, MODIFIED YUM! STANDARD DETAIL



DETAIL 7
JAMB DETAIL

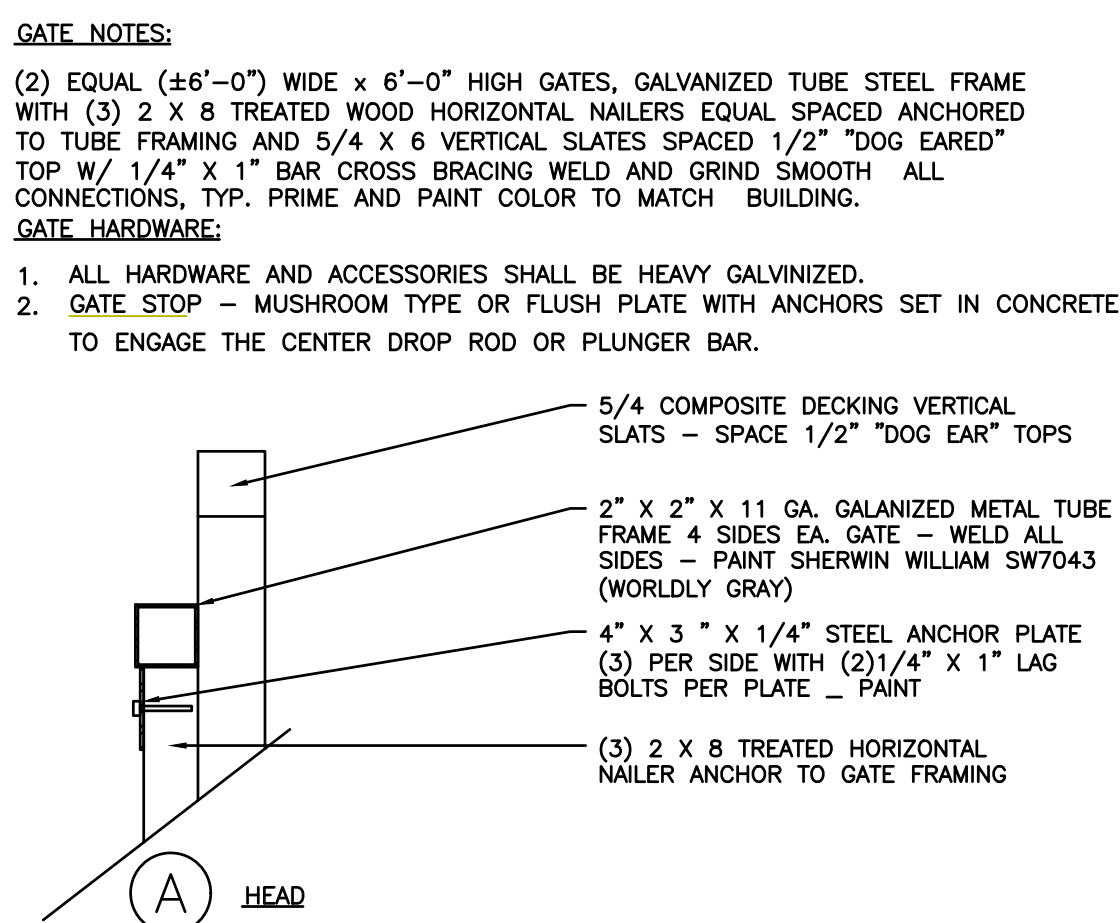
NOT TO SCALE. MODIFIED YUM! STANDARD DETAIL



DETAIL 5

SECTIONS

NOT TO SCALE. MODIFIED YUM! STANDARD DETAIL



NOTES:

1. LOCATION SHALL BE APPROVED BY THE TOWN OF ELGIN. AREAS SHALL BE ACCESSIBLE FOR DELIVERY AND COLLECTION.
2. GATES SHALL BE AS SHOWN AND MUST BE APPROVED BY THE TOWN OF ELGIN PRIOR TO INSTALLATION.
3. GATE LATCHES SHALL BE OF THE PLUNGER BAR TYPE OR EQUIVALENT AS APPROVED BY THE TOWN OF ELGIN.
4. SEE ATTACHED SPECIFICATIONS, NOTES AND PROCEDURES

TRASH ENCLOSURE DETAIL MATERIAL SPECIFICATIONS:

1. CONCRETE BLOCK: 6" MINIMUM IN SIZE. ASTM C90.
2. REINFORCING STEEL: ASTM 615. GRADE 40.
3. ACCEPTABLE SOIL TYPES:
 - A. MIN. ALLOWABLE BEARING: 1000 LBS./SQ. FT.
 - B. MIN. LATERAL BEARING: 100 LBS./SQ. FT./FT.
 - C. MAX EXPANSION INDEX: 20
4. CONCRETE: BLACK, 4,000 LBS./SQ. IN. IN 28 DAYS.
5. MORTAR: 1" 1/4:3 (PORTLAND CEMENT: HYDRATED LIME OR LIME PUTTY: SAND. BY VOLUME). MIXED TO PLASTIC CONSISTENCY. REFER TO UBC TABLE 24-A FOR OTHER TYPES OF CEMENT.
6. GROUT: 1"1/10:3 (PORTLAND CEMENT: HYDRATED LIME OR LIME PUTTY: SAND BY VOLUME).MIX TO FLOW WITHOUT SEGREGATION. GROUT MAY CONTAIN 2 PARTS PEA GRAVEL (3/8" MAX. SIZE).
7. MINIMUM COMPRESSIVE STRENGTH: 2000 LBS./SQ. IN. REFER TO UBC TABLE 24-B FOR OTHER TYPES OF CEMENT.
8. METAL ANCHORS: 2" x 2" x 11" GALVANIZED METAL TUBE FRAME WITH HORIZONTAL MEMBER AT CENTER OF GATE. 1/4" x 1" FLAT CROSS BRACING WELD TO FRAME.
9. TREATED WOOD NAILERS: ANCHOR TO FRAME WITH METAL ANCHOR PLATES.
10. COMPOSITE DECKING: 5/4 x 8 COMPOSITE DECKING "DOG EAR" TOPS, SPACE 1/2". DESIGN REFERENCE: TIMBERTECH COMPOSITE DECKING. WARRANTY - 25 YEAR AGAINST ROT, DECAY, SPLITTING, CHECKING SPLITTERING OR TERMITE DAMAGE. COLOR - STONE ASH

GENERAL NOTES:

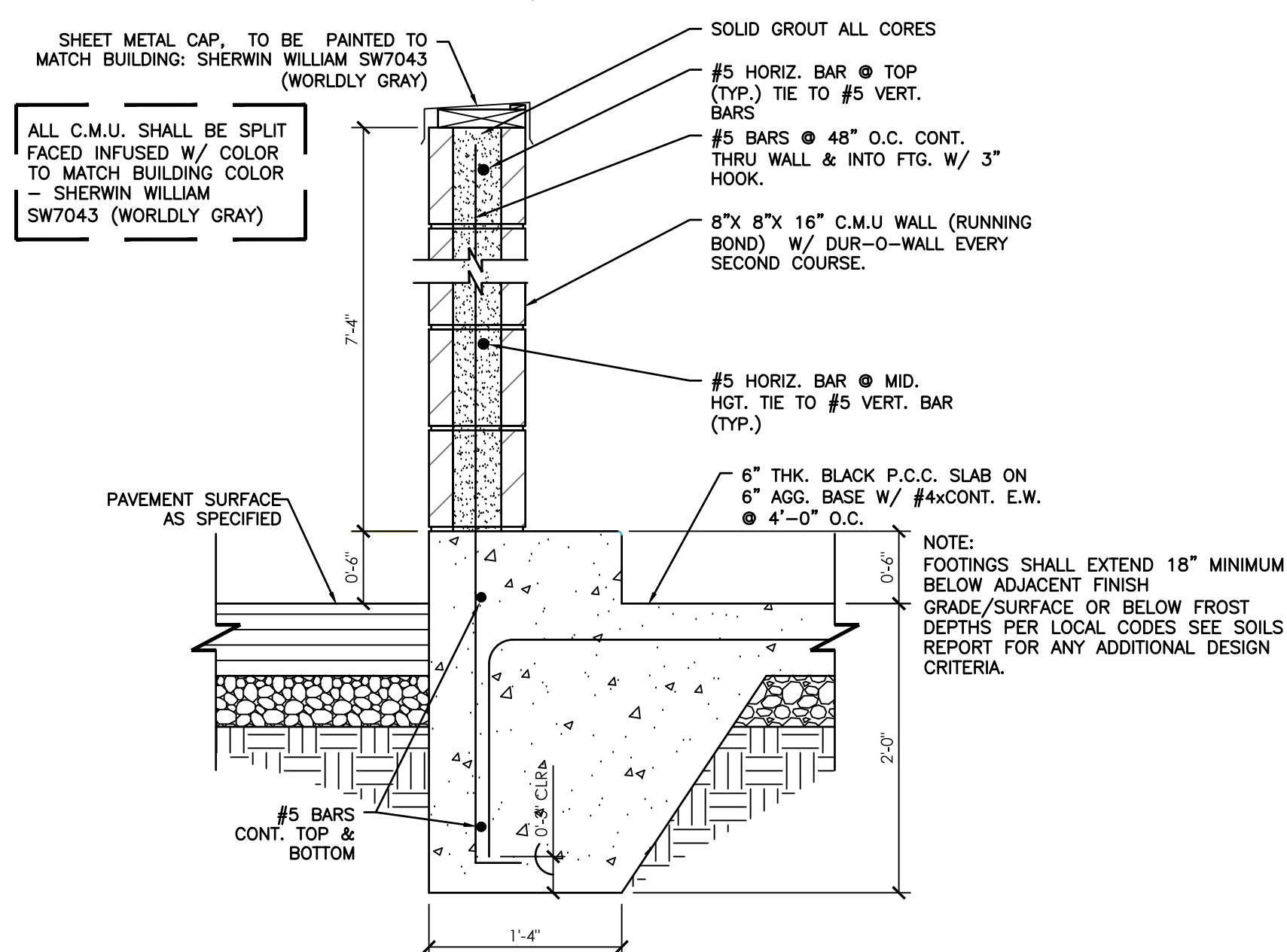
1. THIS DESIGN IS FOR AVERAGE CONDITIONS AND MAY NOT BE SUITABLE FOR ALL CASES. IT IS RECOMMENDED THAT A LICENSED CIVIL OR STRUCTURAL ENGINEER BE CONSULTED.
2. FOOTINGS SHALL BE IN NATURAL SOIL OR CERTIFIED FILL.
3. BLOCKS TO BE STAGGERED (RUNNING BOND)
4. ALL CELLS CONTAINING REINFORCING STEEL SHALL BE GROUTED.
5. APPROVED GROUT STOPS ARE REQUIRED BELOW HORIZONTAL STEEL IN PARTIALLY GROUTED WALLS. BAGS, NEWSPAPERS, ETC. ARE NOT APPROVED GROUT STOPS.
6. INITIAL BED JOINT SHALL BE 1/4" MIN. 1" MAX. SUBSEQUENT BED JOINTS SHALL BE 1/4" - MIN., 3/8" MAX.
7. VERTICAL CONTINUITY OF CELLS SHALL BE UNOBSTRUCTED. MORTAR PROJECTIONS SHALL NOT EXCEED 1/2" FOR 6" AND LARGER BLOCK. MORTAR DROPPINGS OR OTHER FOREIGN MATTER ARE NOT PERMITTED IN CELLS AND MUST BE REMOVED.
8. EXPANSION JOINTS REQUIRED AT 60'-0" MAX. INTERVALS.
9. REQUIRED BAR LAPS:
 - A. VERTICAL STEEL: 30 BAR DIAMETERS.
 - B. HORIZONTAL STEEL: 40 BAR DIAMETERS.
 - C. WIRE JOINT REINFORCEMENT IN THE MORTARED BED JOINT: 75 WIRE DIAMETERS OR IN ALTERNATE BED JOINTS OF RUNNING BOND, 54 DIAMETERS PLUS TWICE THE BED JOINT SPACING.
10. WHERE HORIZONTAL WIRE JOINT REINFORCEMENT IS REQUIRED OR UTILIZED, IT SHALL BE EQUIVALENT TO 30 1/16" DIAMETER BARS CONCENTRATED AT 16" INTERVALS. 18 GAUGE WELDED WIRE.
11. FOR PIPES AND CONDUIT EMBEDDED IN MASONRY, REFER TO SEC. 24-07(g), UBC.
12. 3" MIN. COVER REQUIRED FOR REINFORCEMENT IN CONCRETE WHICH IS CAST AGAINST EARTH.
13. ALL FINISHED SURFACES TO BE PAINTED: SHERWIN WILLIAM SW7067 (CITY SCALE)

INSPECTION PROCEDURES:

1. FOUNDATION: AFTER TRENCHES ARE DUG, STEEL IS TIED IN PLACE AND BEFORE ANY CONCRETE IS POURED.
2. PREGROUT: AFTER ALL BLOCKS (EXCEPT CAP) ARE IN PLACE. VERTICAL AND HORIZONTAL STEEL IS IN PLACE, GROUT STOPS (FOR PARTIALLY GROUTED MASONRY) ARE IN PLACE. AND PRIOR TO GROUTING.
3. FLNAL: AFTER GROUT IS IN PLACE AND PRIOR TO PLACEMENT OF CAP.

DETAIL 6
GATE DETAILS

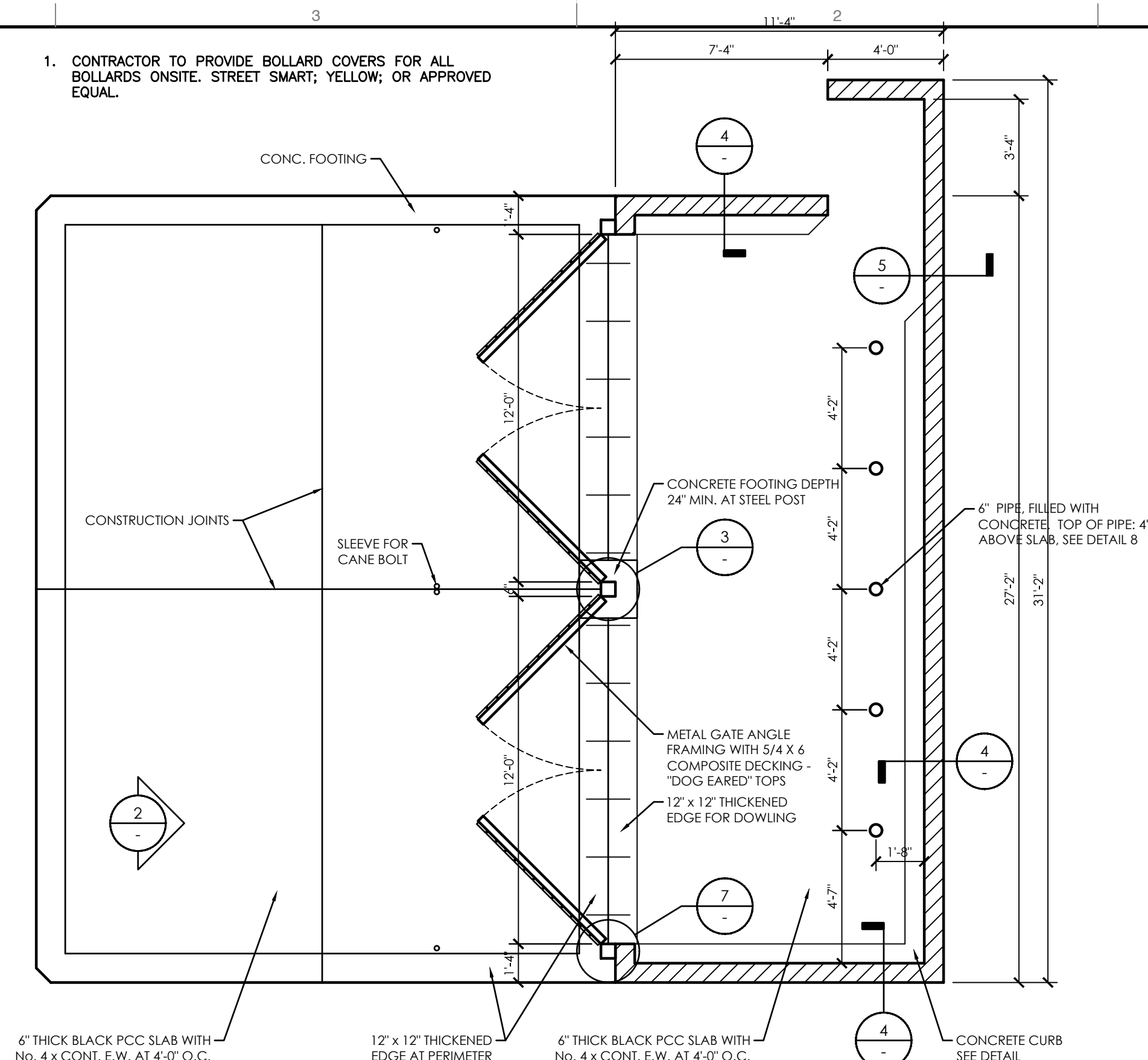
NOT TO SCALE, MODIFIED YUM! STANDARD DETAIL



DETAIL 4

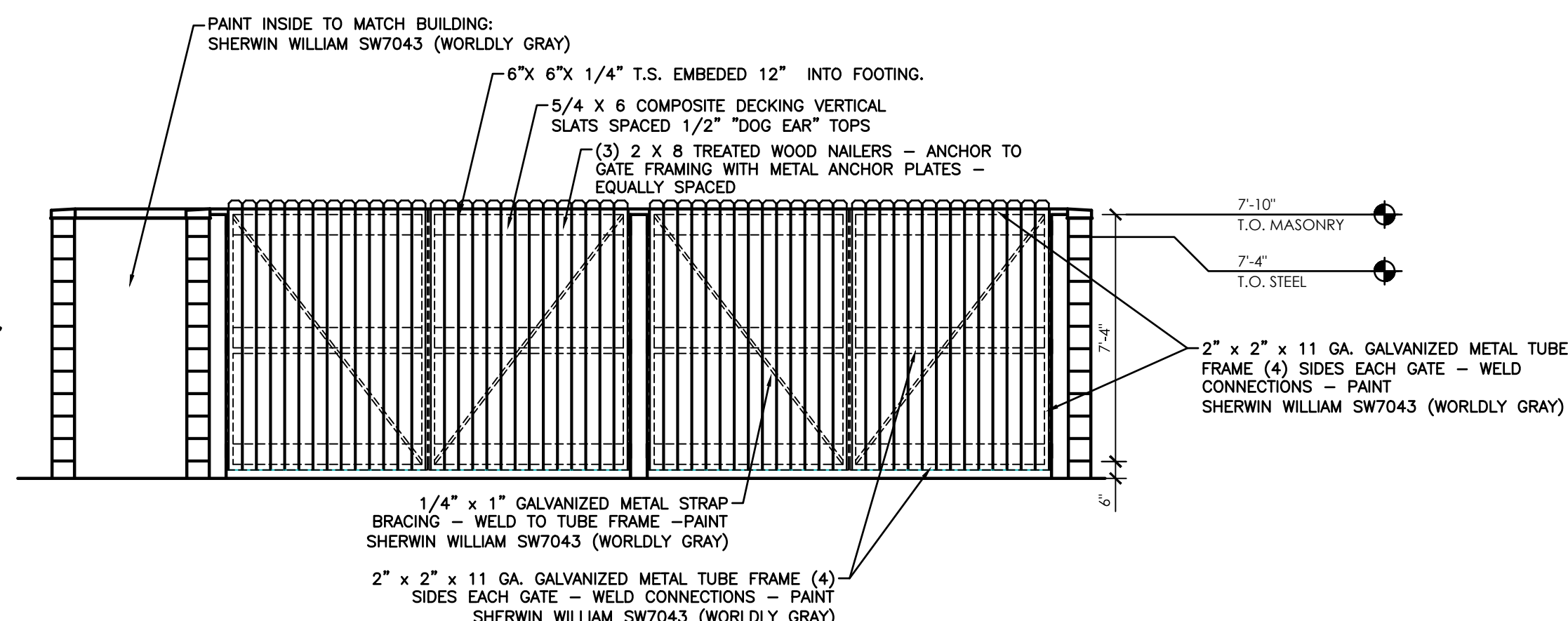
SECTIONS

~~NOT TO SCALE. MODIFIED YUM! STANDARD DETAIL~~



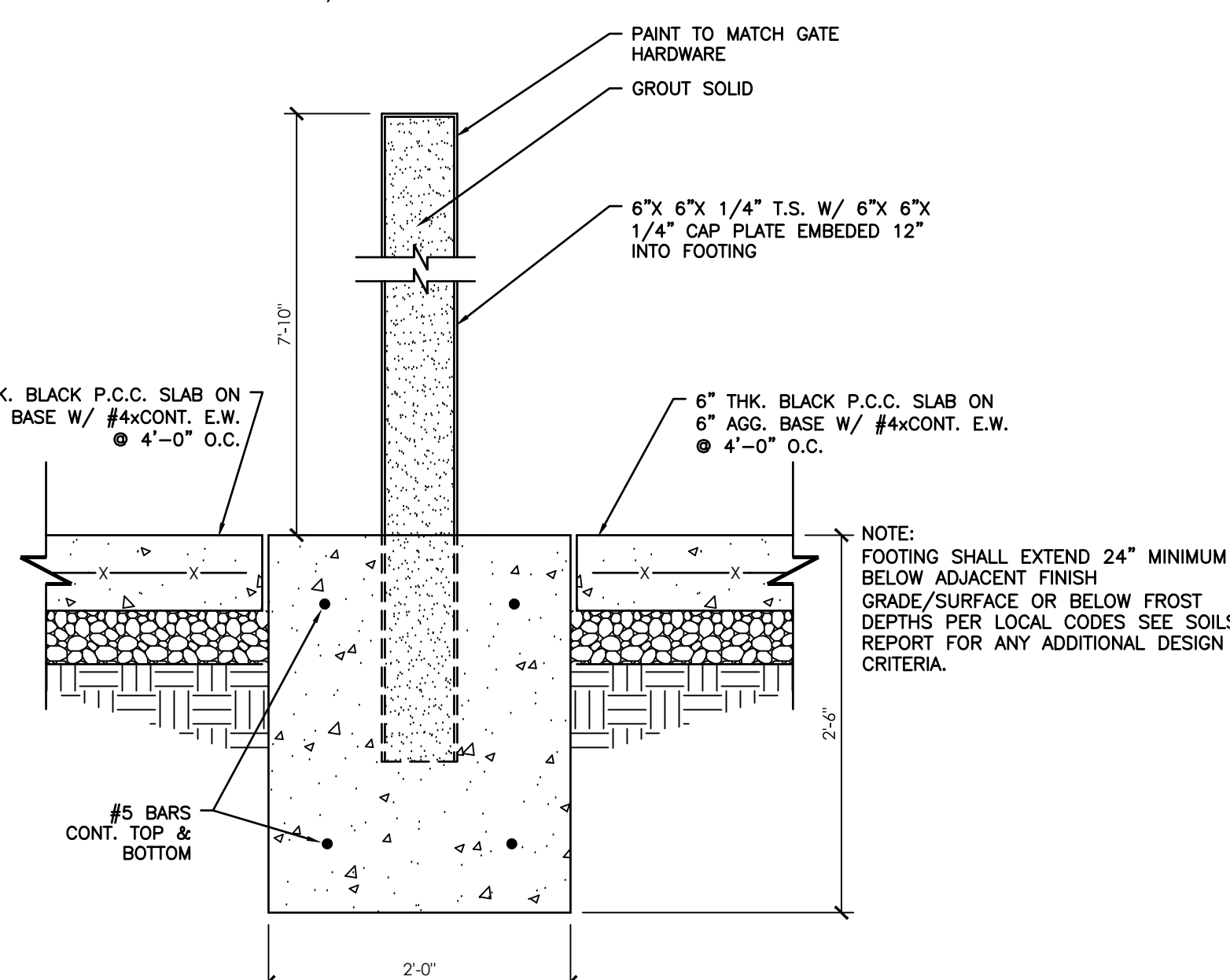
DETAIL 1
PLAN VIEW

NOT TO SCALE, MODIFIED YUM! STANDARD DETAIL



AM SW7043 (WORLD)
DETAIL 2
ELEVATION

NOT TO SCALE, MODIFIED YUM! STANDARD DETAIL



DETAIL 3 SECTIONS

~~NOT TO SCALE. MODIFIED YUM! STANDARD DETAIL~~

[illegible]

Civil & Environmental Consultants, Inc.
11 Municipal Drive • Suite 300 • Fishers, IN 46038
Ph: 317.655.7777 • 877.746.0749 • Fax: 317.655.7778

www.cecinc.com

BELL CAROLINA, LLC.

TACO BELL
5667 SPEARS CREEK CHURCH ROAD
ELGIN, SC 29045

SITE DETAILS

DATE:	05/19/2022	DRAWN BY:	KRG
DWG SCALE:	AS NOTED	CHECKED BY:	DRAFT
PROJECT NO:	320-610		
APPROVED BY:	DRAFT		

DRAWING NO.:

C801

SHEET 11 OF 19

PRELIMINARY
BID SET