



PANDA EXPRESS, INC.
1683 Walnut Grove Ave.
Rosemead, California
91770
Telephone: 626.799.9898
Facsimile: 626.372.8288

All ideas, designs, arrangement and plans indicated or represented by this drawing are the property of Panda Express Inc. and were created for use on this specific project. None of these ideas, designs, arrangements or plans may be used by or disclosed to any person, firm, or corporation without the written permission of Panda Express Inc.

REVISIONS:

Δ	SOLUTION F.2	09.30.21
Δ	OWNER REVISIONS	01-27-22

ISSUE DATE:

	ISSUE FOR PERMIT	01-29-21
	ISSUE FOR BID	04-30-21
	ISSUE FOR BID 2	11-02-21
	ISSUE FOR BID (DT)	02-04-22

DRAWN BY: AE

PANDA PROJECT #: D8164

PANDA STORE #: -

ARCH PROJECT #: 261-321



MPW ENGINEERING, LLC
110 W. 7TH STREET • SUITE 600 • TULSA, OK 74109
(918) 583-4008 • (918) 583-4007 FAX



PANDA EXPRESS

TRUE WARM & WELCOME
JEFFERSON AVE. & MORRIS DR.
NEWPORT NEWS, VA 23605

E-100

POWER FLOOR PLAN

TRUE WARM & WELCOME 2300 R6

- ALL CIRCUITRY/CONDUIT FOR FRONT LINE EQUIPMENT TO BE ROUTED IN CASEWORK TO J-BOX IN WALL AND CONCEALED IN WALL.
- PROVIDE SEALS AND EXPANSION COUPLINGS ON ALL CONDUITS ENTERING OR LEAVING AREA OF TEMPERATURE DIFFERENCE. REFER TO WIRING NOTES 6/E-400 FOR ADDITIONAL INFORMATION.
- PROVIDE (2) 1-1/2" CONDUITS WITH PULL STRINGS FROM CASH REGISTER TO MANAGER STATION. SEE P.O.S. AND SERVICE LINE ELEVATIONS, 3/E-200.
- SEE 'MANAGER STATION ELEVATION' 1/E-200 FOR ADDITIONAL OUTLETS AND J-BOXES.
- ANSUL PULL STATION. REFER TO DETAIL, 2/E-400.
- REFER TO 'LTG AND DOOR HEATER' WIRING DIAGRAM, 10/E-400.
- REFER TO 'COOLER EVAPORATOR COIL' WIRING DIAGRAM, 8/E-400.
- SHOW WINDOW RECEPTACLE SHALL BE CONTROLLED VIA SWITCH "b". REFER TO LIGHTING SWITCHBANK SCHEDULE, SHEET 4/E101. RECEPTACLE SHALL BE MOUNTED IN WALL AS CLOSE TO TOP OF STRUCTURAL HEADER AS POSSIBLE.
- BUILDING SIGNAGE/LOGO DEDICATED/PROPOSED W.P. J-BOX FOR SIGNAGE. COORDINATE LOCATION WITH ARCHITECT / OWNER / SIGN PACKAGE PRIOR TO ROUGH-IN. SIGN DISCONNECT PROVIDED BY SIGN CONTRACTOR.
- REFER TO 'FREEZER EVAPORATOR COIL' WIRING DIAGRAM, 9/E-400. THE FAN COIL UNIT IS POWERED FROM THE CONDENSER UNIT VIA DISCONNECT CONNECTION. HEAT TAPE PROVIDED AND INSTALLED BY ELECTRICIAN.
- NOT USED.
- NOT USED.
- HOOD CONTROL PANEL/ANSUL SYSTEM CABINET. MOUNT CABINET DIRECTLY BELOW T-BAR CEILING.
- PROVIDE 2-GANG J-BOX @ 48" AFF FOR HOOD CONTROL SWITCHES. REFER TO M-400 AND M-401.
- 1" CONDUIT STUB UP LOCATION IN STAINLESS STEEL POWER PANEL FOR ISLAND KITCHEN EQUIPMENT CONNECTION. REFER TO DETAIL 2/A-109. COORDINATE LOCATION WITH ARCHITECT / OWNER.
- ROUTE CABLING / CIRCUITRY THROUGH 1" CONDUIT IN SLAB.
- UTILIZE SEAL TIGHT CONDUIT FOR ALL WIRING INCLUDED ALONG LOW WALL PANEL.
- ALL DEVICES UNDER HOOD TO BE PROVIDED AND INSTALLED WITH GROUND FAULT CIRCUIT BREAKER AND WATERPROOFING BOX (RED DOT #CKSUV). REFER TO COOKLINE ELECTRICAL ELEVATIONS, 6/E-200. ROUTE HOMERUN THROUGH CONTRACTOR INTERFACED WITH THE HOOD FIRE SUPPRESSION SYSTEM. REFERENCE 13/E-400 FOR ADDITIONAL INFORMATION.
- SIMPLEX RECEPTACLE TO BE CONNECTED TO BACK-OF-HOUSE LIGHTING CIRCUITRY/CONTROL. CONTRACTOR TO PROVIDE PIGTAIL FROM CIRCULATION PUMP.
- PROVIDE WEATHERPROOF RECEPTACLE FOR HEAT TAPE. COORDINATE FINAL LOCATION WITH REFRIGERATION INSTALLER.
- ELECTRIC GRIDDLE '23E': FEED WITH (2) #6, (1) #10 GROUND, 3/4" CONDUIT. REFER TO 4/E-200.
- SEE DRIVE THRU ELEVATION 2/E-200 FOR CONDUIT SIZES AND CONFIGURATIONS.
- SEE TICKET PRINTER ELEVATIONS, 7/E-200.
- PROVIDE WATERPROOFING, COVER, IN-USE RED DOT (#CKSUV).
- SEE FOR DRIVE-THRU ELEVATIONS, 2/E-200.
- SEE DRINK STATION ELEVATIONS, 5/E-200.
- SEE 3/E-200 FOR SERVICE LINE ELEVATIONS.
- SEE DEVICE / RECEPTACLE SCHEDULE 3/E400.
- SEE DINING ROOM MONITOR ELEVATION, DETAIL 8/E-200.
- PROVIDE AND INSTALL 3/4" CONDUIT AND PULL STRING FROM CLOSEST LANDSCAPE AREA, THROUGH WALL UP TO EMPTY FLUSH MOUNTED JUNCTION BOX @ 54" A.F.F. (FOR IRRIGATION CONTROLS). CLOSE OFF CONDUIT IN LANDSCAPE AREA WITH REMOVABLE CAP. UTILIZE WP CIRCUIT A-53 NEAR ENTRY POINT.
- REFER TO 9/E-200 FOR LOCATION/INSTALLATION OF C02 DEVICE.
- SEE SWITCH BANK ELEVATION , DETAIL 7/E-200.
- FLY LIGHT RECEPTACLE SHALL BE INSTALLED WITH A RECESSED CLOCK SIMPLEX OUTLET. TYP OF ALL LOCATIONS.
- SEE SECURITY KEY PAD ELEVATION 1/E200.
- CONNECT HEAT LAMPS TO COUNTER-MOUNTED SWITCH PROVIDED AND INSTALLED BY CONTRACTOR. COORDINATE EXACT LOCATION WITH KITCHEN EQUIPMENT PROVIDER.
- PANDA EXPRESS TO PROVIDE C02 MONITOR, E.C. TO MOUNT OVER J-BOX WITH WIRING THROUGH WALL CONDUIT FOR CLEAN INSTALLATION. PROVIDE ALL OTHER REQUIRED CONNECTIONS AND COMPONENTS FOR FULLY WORKING SYSTEM.
- PROVIDE IN-GRADE QUAZITE 8"X8" PC STYLE POLYMER CONCRETE BOX OR EQUAL FOR UNDERGROUND CABLE REQUIRED FOR THE STORE. PART NO. PC081XXXXX OR SIMILAR. REFER TO ELECTRICAL SITE PLAN 1/E105.
- PROVIDE 1" CONDUIT FOR CABLE DEDICATED FOR ENTIRE STORE FROM IN-GRADE 8X8 QUAZITE BOX TO EXTERIOR CLOSET 6X6 FLUSH MOUNTED JUNCTION BOX. TERMINATE INTERIOR ABOVE CEILING.
- PROVIDE FLUSH MOUNTED NEMA 1 6X6 JUNCTION/PULL BOX AT +48" - HUBBELL OR EQUAL. ROUTE CABLE FROM EXTERIOR 6X6 IN 1" CONDUIT THROUGH BUILDING. TERMINATE INTERIOR ABOVE CEILING.
- PROVIDE A 1" CONDUIT FOR CIRCUIT 'A' 69 FOR POWER SUPPLY TO THE DRIVE THRU HOT WELL CABINET. PROVIDE A 3/2" CONDUIT FROM THE THIS LOCATION TO ABOVE CEILING NEAR THE MANAGER CABINET FOR LOW VOLTAGE WIRING.
- FIRE SUPPRESSION SHUTDOWN CONTACTOR LOCATED ABOVE CEILING , REFER TO 13/E-400.
- ELECTRICIAN TO WALL MOUNT A NEMA ELECTRICAL DISCONNECT BOX. ELECTRICIAN TO SUPPLY A WIRE WHIP FROM BOX TO MACHINE, FINAL CONNECTIONS BY HOBART SERVICE.
- PROVIDE J-BOX FOR DOOR RELEASE BUTTON.

POWER PLAN KEYED NOTES

3

NOT TO SCALE

POWER PLAN GENERAL NOTES

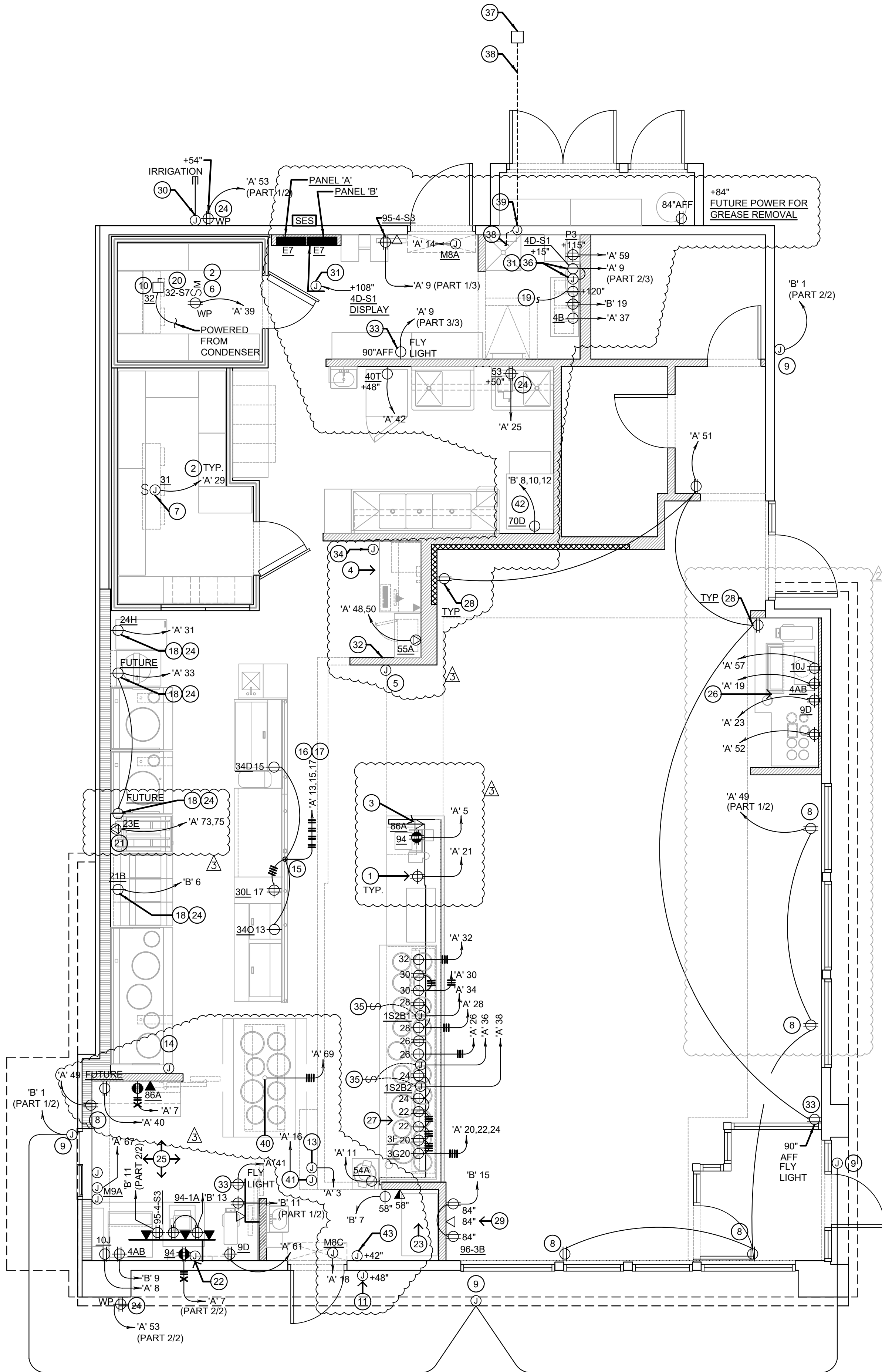
2

NOT TO SCALE

POWER FLOOR PLAN

1

Scale: 1/4"=1'-0"



ALL 120 VOLT, 20 AMP RECEPTACLES LOCATED UNDER COUNTERS WITHIN SERVING AREA 101, DRIVE-THRU 102, AND KITCHEN 103 TO BE SERVED FROM GFCI-TYPE CIRCUIT BREAKERS PER NEC 210.8 (B) (2).

- VERIFY QUANTITIES AND REQUIREMENTS OF ALL HVAC & KITCHEN EQUIPMENT PRIOR TO ROUGH IN.
- ALL TELEPHONE/DATA/TV CABLES AND WIRES, AND TERMINATIONS OF ALL REQUIRED CABLE AND JACKS WILL BE INSTALLED BY THIRD PARTY.
- POWER SUPPLY FOR COMPUTER AND CASH REGISTER (86A & 94) SHALL BE ON THE SAME CIRCUIT BREAKER, W/ISOLATED GROUND & ORANGE RECEPTACLE.
- ALL CIRCUITRY SHOWN WITHOUT TICKS SHALL HAVE (2) WIRES PLUS EQUIPMENT GROUNDING CONDUCTOR.
- WHEN WORKING IN JURISDICTIONS WHICH HAVE ADOPTED THE 2017 NEC OR LATER, ALL MULTI-WIRE BRANCH CIRCUITS SHALL HAVE SEPARATE NEUTRALS TO MEET THE REQUIREMENTS OF 2017 NEC 210.4(B).
- TRANSFORMERS SHALL BE MOUNTED ABOVE CEILING BELOW TRUSSES WITH LOW VOLTAGE WIRING FEEDING TO ALL EXTERIOR LIGHTS.
- ALL UNDERGROUND CONDUIT SHALL BE 12" BELOW F.F.