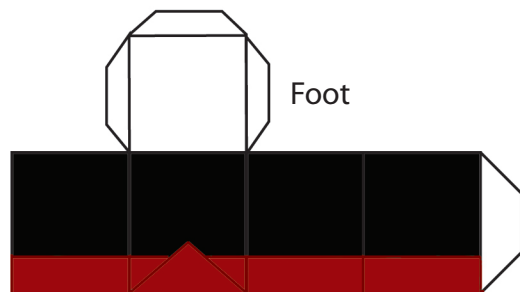
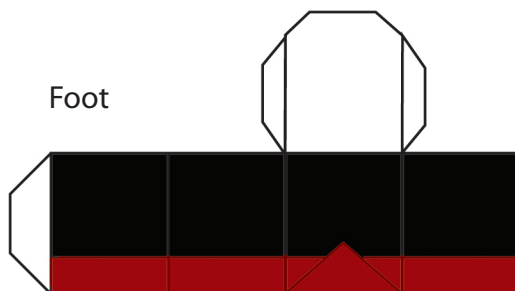
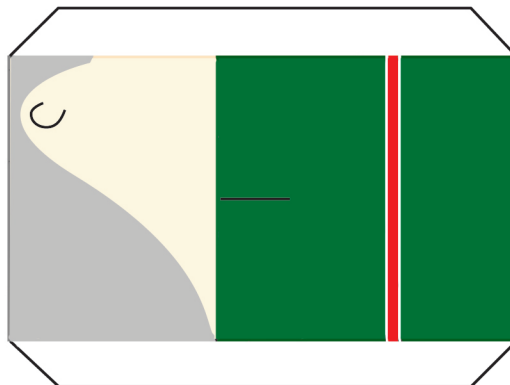


CHRISTMAS SERIES

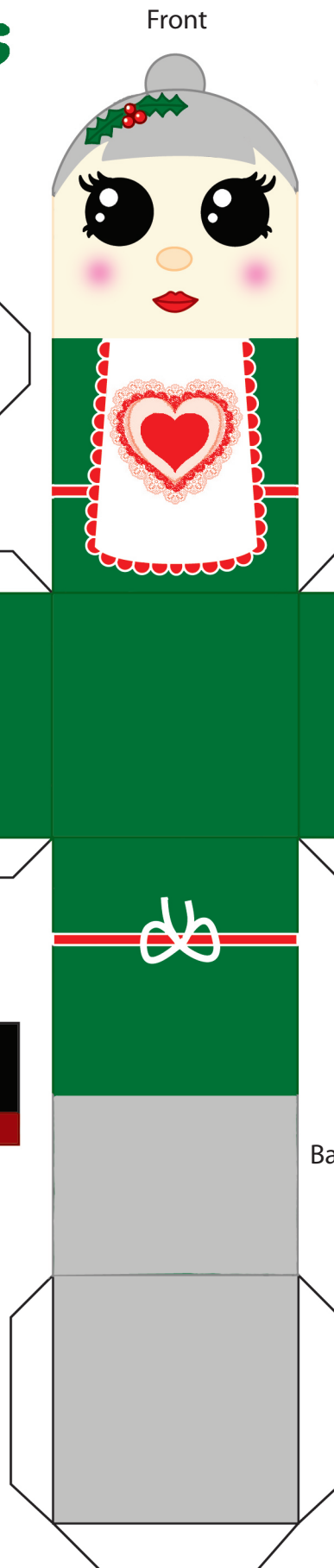
Mrs Claus



Side



Foot



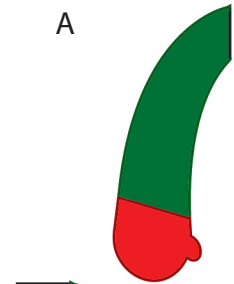
Front

Side

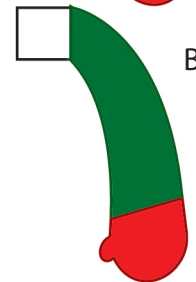
Back

Arm

A

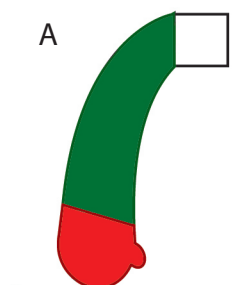


B



Arm

A



B



www.samanthaeynon.com

- 1) Score along fold lines and cut out, cut out slot for arms on the sides
- 2) Stick a and b back to back to form the arms.
- 3) Put tab for arms through slots cut out earlier.
- 4) Glue together. Stick feet onto the bottom of the model

little Gangee

©samantha eynon 2009