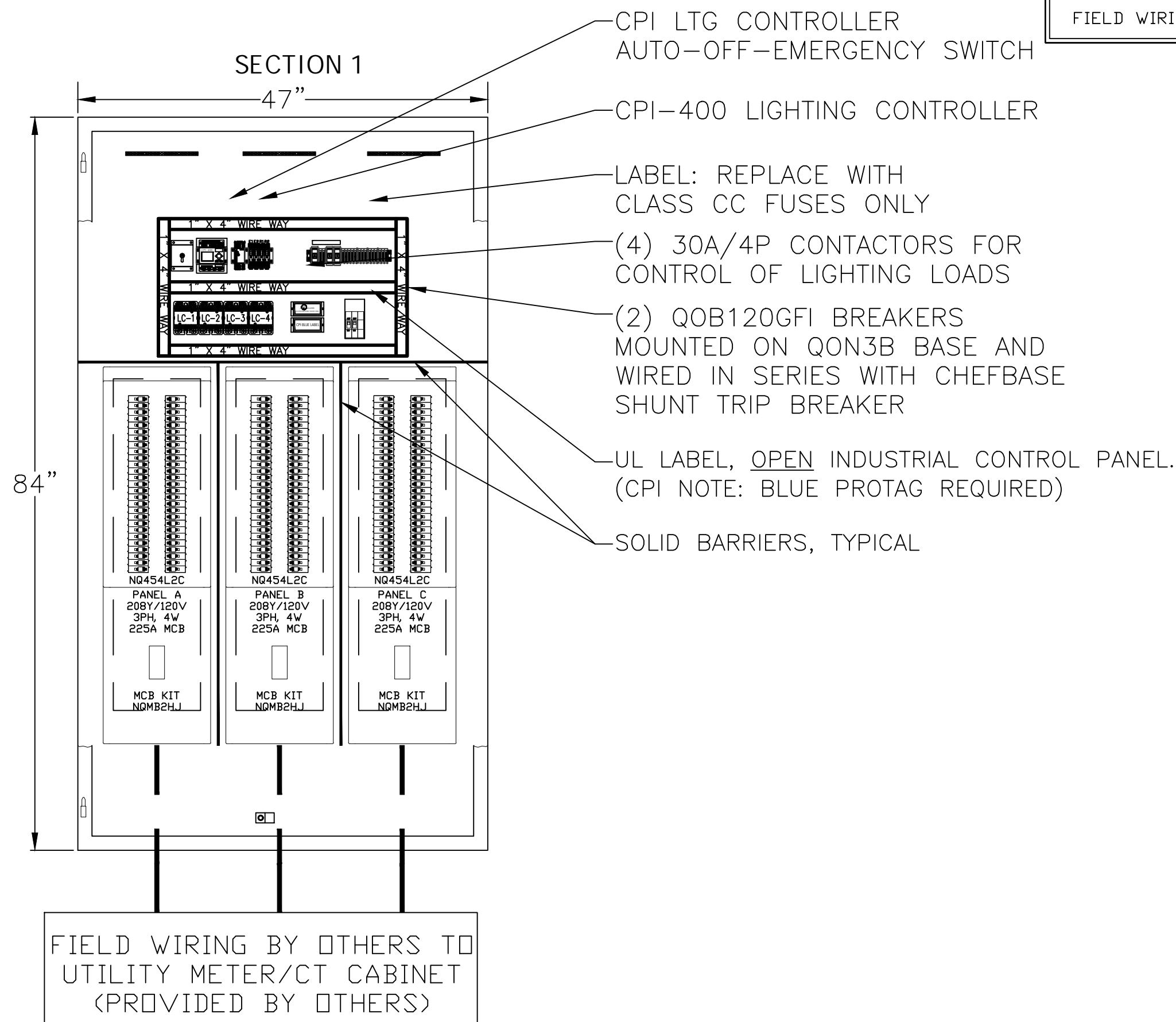


Drawing File: C:\Users\chudson\appdata\local\temp\AcPublish_16260\EB01r2.dwg
Plotted by: chudson
Plotted Date: Jun 24, 2022 -- 10:39am

CPI UNITIZED SWITCHGEAR

INTERIOR/EXTERIOR VIEWS (NTS)

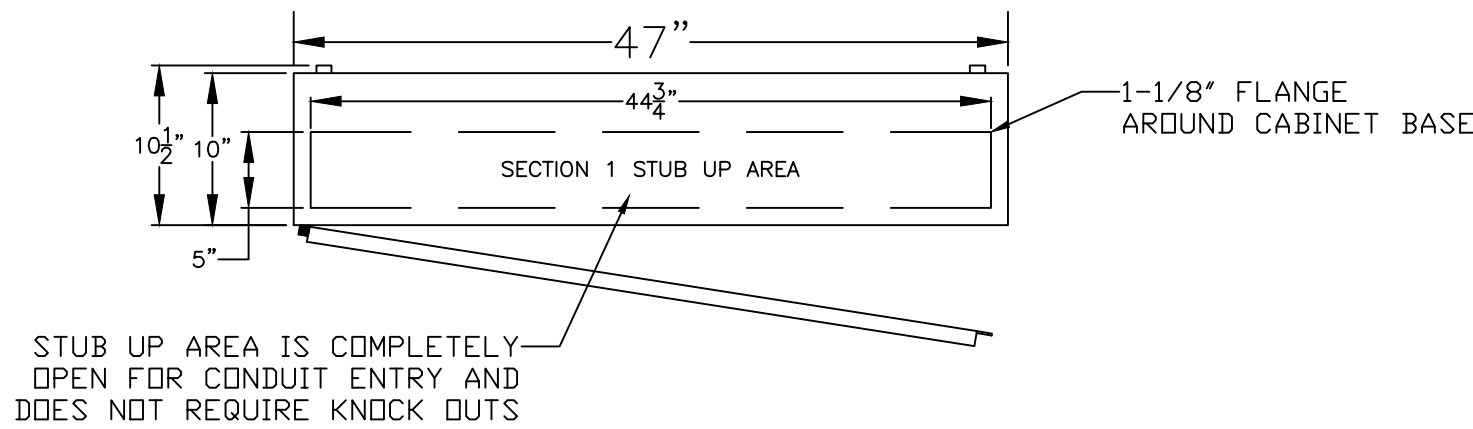


WIRE LEGEND

FACTORY WIRING: _____
FIELD WIRING: _____

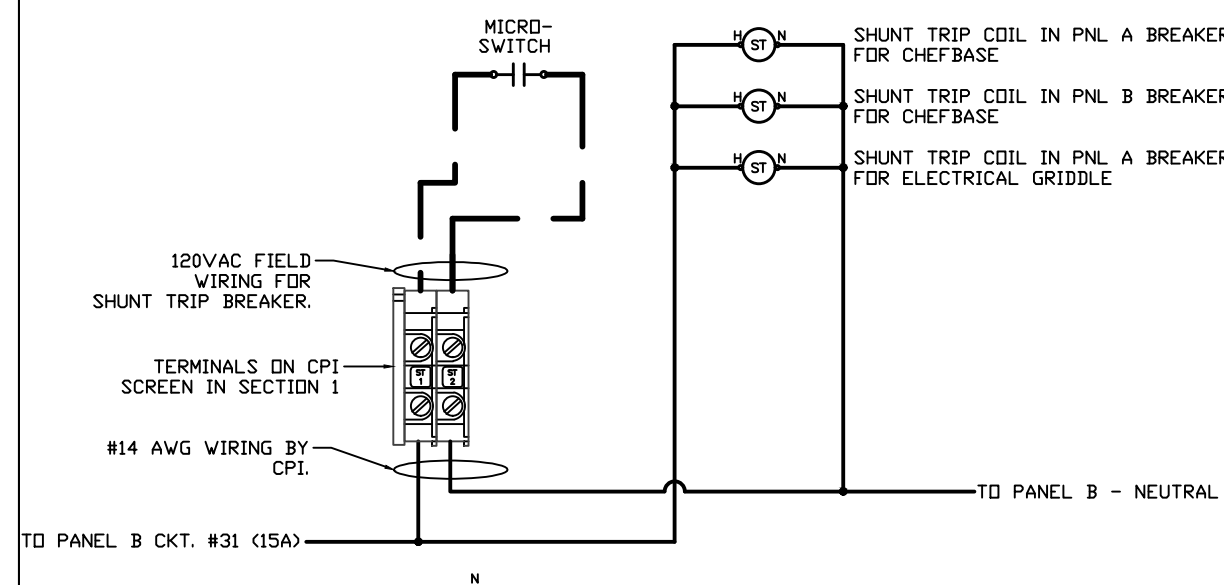
ROUGH-IN DETAIL

NTS



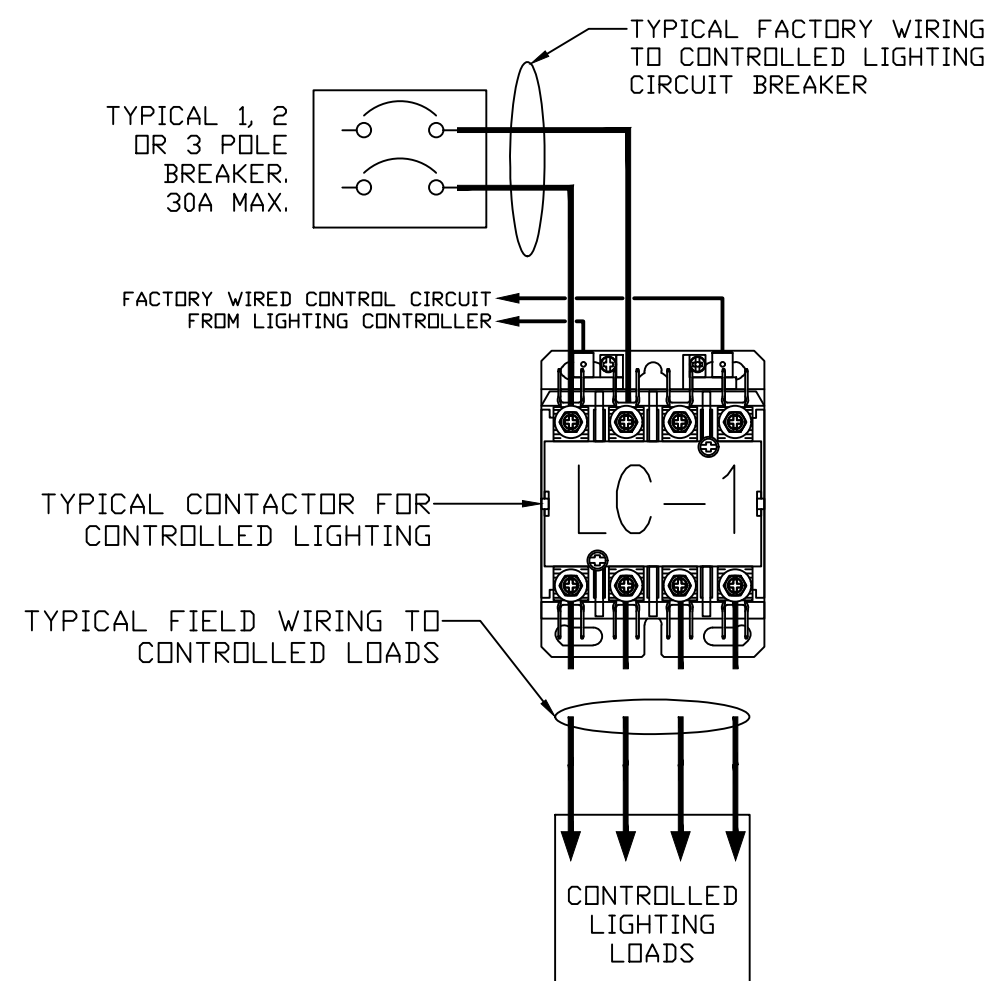
SHUNT TRIP DETAIL

NTS



LIGHTING CONTACTOR DETAIL

TYPICAL



NOTES:

1. TYPICAL CONTACTORS ARE 30 AMPERE, 4 POLE, DEFINITE PURPOSE TYPE.
2. ELECTRICALLY HELD, 120VAC COIL
3. LINE SIDE OF CONTACTOR IS FACTORY WIRED TO 30A MAX. CIRCUIT BREAKER.
4. LOAD SIDE OF CONTACTOR IS FIELD WIRED TO LIGHTING LOADS.
5. CONTROL CIRCUIT IS FACTORY WIRED (#14AWG MIN.) TO LIGHTING CONTROLLER.

DOOR MOUNTED COMPONENTS

LAYOUT & LABELING

ZONE #1

ZONE #2

NOTES:

1. TYPICAL PUSHBUTTONS ARE ILLUMINATED, MOMENTARY CONTACT TYPE WITH 24VDC PILOT LIGHTS.
2. DOOR MOUNTED COMPONENTS ARE FACTORY WIRED AND TAPED TO AVOID ACCIDENTAL CONTACT WITH LIVE PARTS.

PHOTO SENSOR INSTALLATION DETAIL

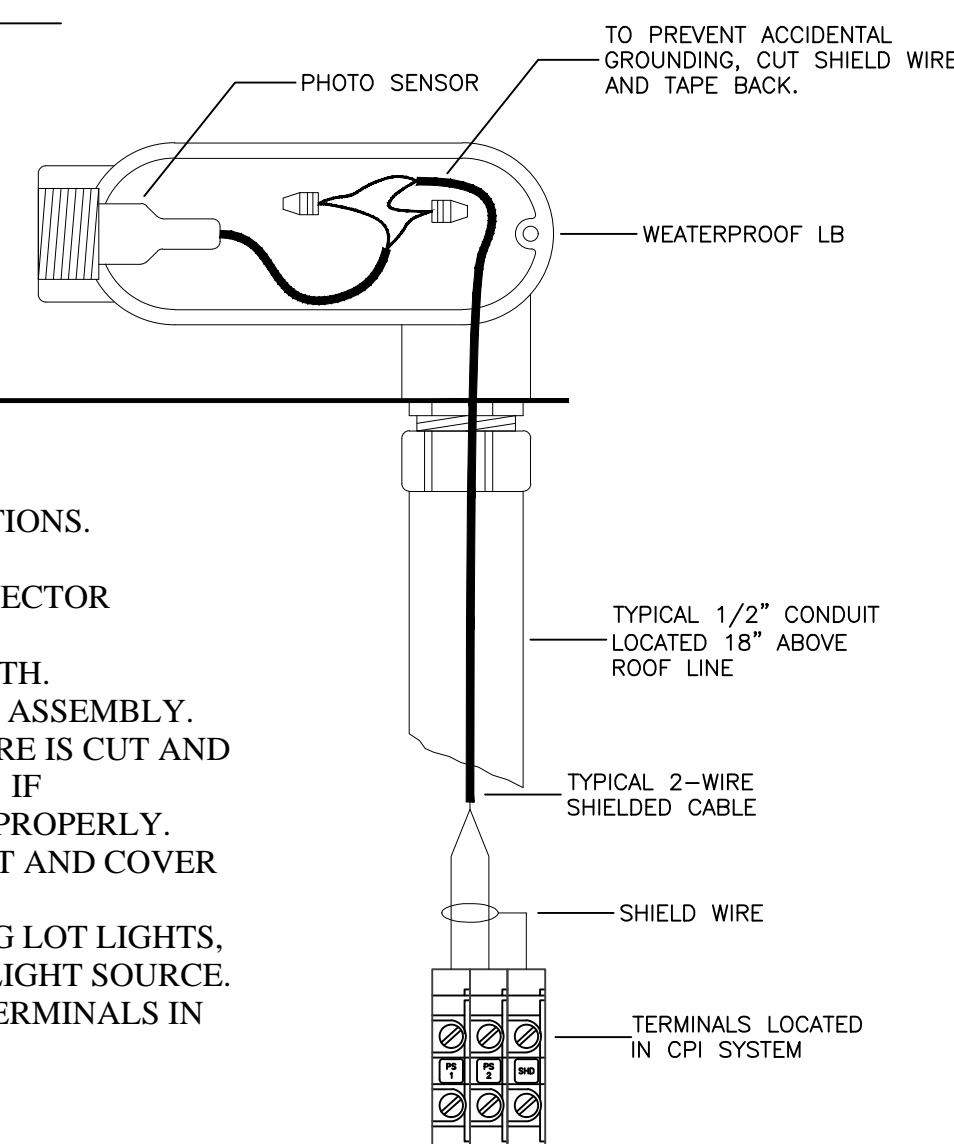
TYPICAL

PSA-1 ASSEMBLY CONTENTS

- 1 - PHOTO SENSOR
- 1 - WEATHERPROOF LB W/ COVER
- 1 - 1/2" CONNECTOR
- 1 - AMBIENT LIGHT SHIELD

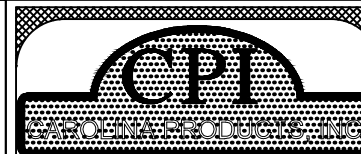
1. SELECT A POSITION ON THE ROOF THAT IS FREE FROM ANY OBSTRUCTIONS.
2. STUB A 1/2" CONDUIT A MINIMUM OF 18" ABOVE THE ROOF LINE.
3. ATTACH THE PSA-1 ASSEMBLY TO THE CONDUIT USING THE 1/2" CONNECTOR PROVIDED WITH THE PSA-1.
4. TO ENSURE PROPER OPERATION, THE PHOTO SENSOR MUST FACE NORTH.
5. PULL A 2-WIRE SHIELDED CABLE FROM THE CPI SYSTEM TO THE PSA-1 ASSEMBLY.
6. CONNECT LIKE COLOR WIRES. IT IS IMPORTANT THAT THE SHIELD WIRE IS CUT AND TAPED BACK AT THE SENSOR TO PREVENT ACCIDENTAL GROUNDING. IF ACCIDENTAL GROUNDING OCCURS, THE SENSOR MAY NOT PERFORM PROPERLY.
7. AFTER ALL WIRING CONNECTIONS HAVE BEEN MADE ATTACH GASKET AND COVER TO WEATHERPROOF LB SUPPLIED AS PART OF PSA-1 ASSEMBLY.
8. IF SENSOR IS EXPOSED TO A BRIGHT LIGHT SOURCE, SUCH AS PARKING LOT LIGHTS, ADJUST THE AMBIENT LIGHT SHIELD TO LIMIT THE EFFECTS OF THIS LIGHT SOURCE.
9. CONNECT THE OTHER END OF THE 2-WIRE SHIELDED CABLE TO THE TERMINALS IN THE CPI SYSTEM AS SHOWN.
10. INSTALLATION IS COMPLETE.

NORTH



NOTE: EC SHALL PROVIDE ALTERNATIVE BID TO PROVIDE AND INSTALLED CPI SWITCHGEAR IN LIEU OF LOOSE ELECTRICAL PANELS.

NOTE: E.C. SHALL REFER TO CPI SHOP DRAWINGS FINAL CONNECTION AND WIRING.



CAROLINA PRODUCTS, INC.
1132 PRO AM DR.
CHARLOTTE, NC 28211
PHONE: (704)-364-9029
FAX: (704)-367-1215

THIS DRAWING IS THE PROPERTY OF
OF CAROLINA PRODUCTS, INC. ANY
USE OR REPRODUCTION WITHOUT
WRITTEN CONSENT IS PROHIBITED

REVISIONS:

REVISION 1:

REVISION 2:

REVISION 3:

SHEET DESCRIPTION:

INTERIOR & EXTERIOR VIEWS
ROUGH-IN DETAILS
PUSHBUTTON LAYOUT
PHOTOCELL INSTALLATION INFO

PROJECT OVERVIEW:

PROJECT NAME:
HWY 55 BURGERS, SHAKES & FRIES

PROJECT CITY:
2022 PROTOTYPE 3.1

CPI PROJECT INFORMATION:

CPI PROJECT #:

DATE:
06/06/2022

DRAWN BY:
AJW

SHEET: 1.0

LHMT Project No. 21318

THIS DRAWING IS THE PROPERTY OF THE
ARCHITECT AND MAY NOT BE REPRODUCED OR
USED WITHOUT THE WRITTEN PERMISSION

SHOP DRAWINGS
FOR REFERENCE

PROJECT: **HIGHWAY 55**
30 PROTOTYPE
1424 CURTIS BRIDGE ROAD
WILKESBORO, NC 28697

DRAWING:
CPI SWITCHGEAR (SHOP DRAWING FOR REFERENCE ONLY)

Revisions

THRU ADDENDUM "A"
01/20/2022

EQUIP. UPDATE - 06.24.2022

PROJECT DATE
01/07/2022

Drawn By
JP

Checked By
JP

Sheet No.
E801