

# CORNER RECORD

COUNTY OF MONO T. 15 R. 27E SEC. 15 MERIDIAN MON CALIFORNIA

CORNER TYPE: GOV'T. CORNER ☒ MEANDER ☐ RANCHO ☐ CONTROL ☐ OTHER ☐

CORNER IDENTIFICATION - DATE OF VISIT SEPT. 27 19 89

15-14

CORNER - LEFT AS FOUND ☐ FOUND AND TAGGED ☐ REESTABLISHED OBLITERATED CORNER ☒ REBUILT ☐

PHYSICAL DESCRIPTION OF CORNER FOUND: EVIDENCE AND METHOD USED TO IDENTIFY OR REESTABLISH FOUND ONE ORIGINAL BEARING TREE WITH OLD FOREST SERVICE LOCATION POSTER AND BLAZE IN SECTION 14. (NOW DEAD AND DOWN) FOUND A 44" STUMP WITH BLAZE FOR THE BEARING TREE IN SECTION 15. ACCEPTED BOTH AS ORIGINAL BEARING TREES PER THE 1856 SURVEY RECORD

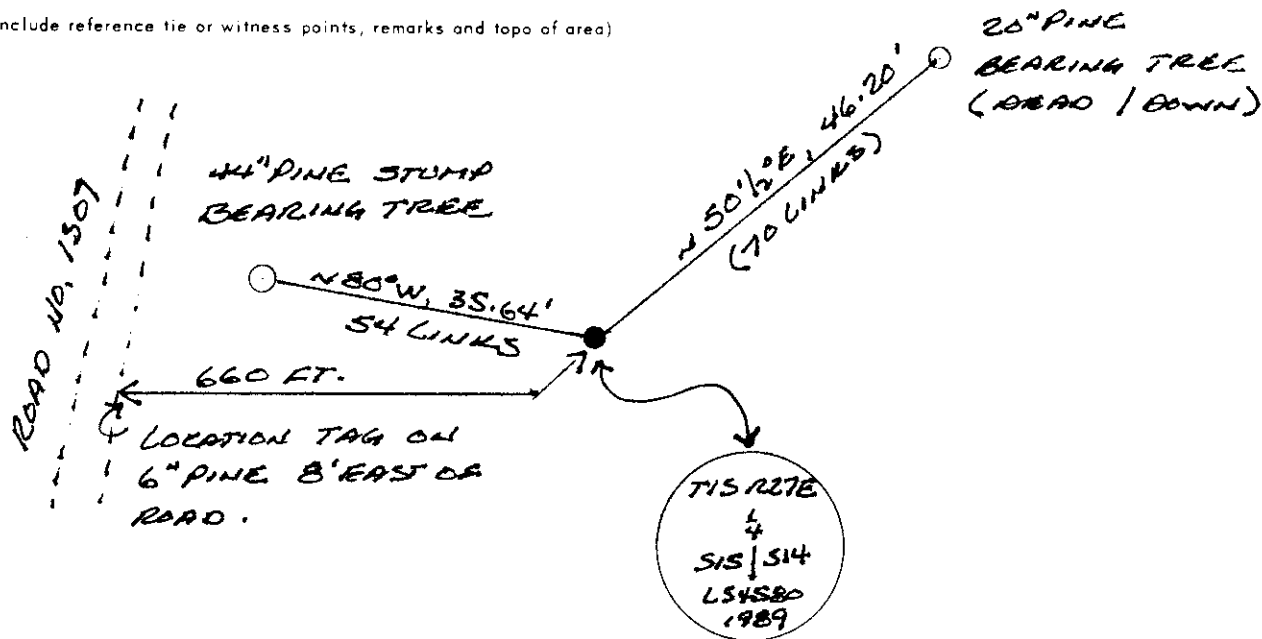
PHYSICAL DESCRIPTION OF MONUMENTS REBUILT OR PERPETUATED REESTABLISHED 1/4 CORNER BY DISTANCE / DISTANCE INTERSECTION FROM EACH B.T. SET AN ALUMINUM POST 2 1/2" DIAMETER, 30" LONG, 29" IN THE GROUND WITH A 3" ALUMINUM CAP MARKED AS SHOWN BELOW:

CALIFORNIA COORDINATE SYSTEM ORDER: FIRST ☐ SECOND ☐ THIRD ☐

STATIONS USED: NGS (USC & GS) ☐ STATE ☐ COUNTY ☐ OTHER ☐ STATION \_\_\_\_\_ STATION \_\_\_\_\_

ZONE \_\_\_\_\_ ELEVATION \_\_\_\_\_ NORTHINGS (Y) \_\_\_\_\_ EASTINGS (X) \_\_\_\_\_

SKETCH: (Include reference tie or witness points, remarks and topo of area)

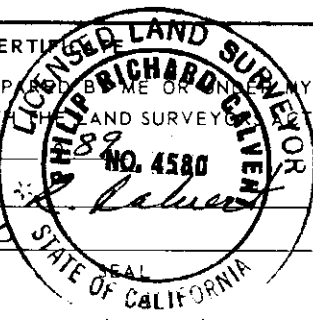


SURVEYOR'S CERTIFICATE

THIS CORNER RECORD WAS PREPARED BY ME OR UNDER MY DIRECTION IN CONFORMANCE WITH THE LAND SURVEYING ACT ON SEPT. 27

SIGNED: Philip J. Palmer

L.S. or R.C.E. No.: LS4580



COUNTY SURVEYOR'S CERTIFICATE

THIS CORNER RECORD WAS RECEIVED 11-4 19 91 AND EXAMINED AND FILED 3-2 19 92

BY: Donna M. Mullan

TITLE: MONO COUNTY SURVEYOR

DOCUMENT No. 1527-15-1

STATEMENT ON BACK OF SHEET

YES ☐ NO ☒