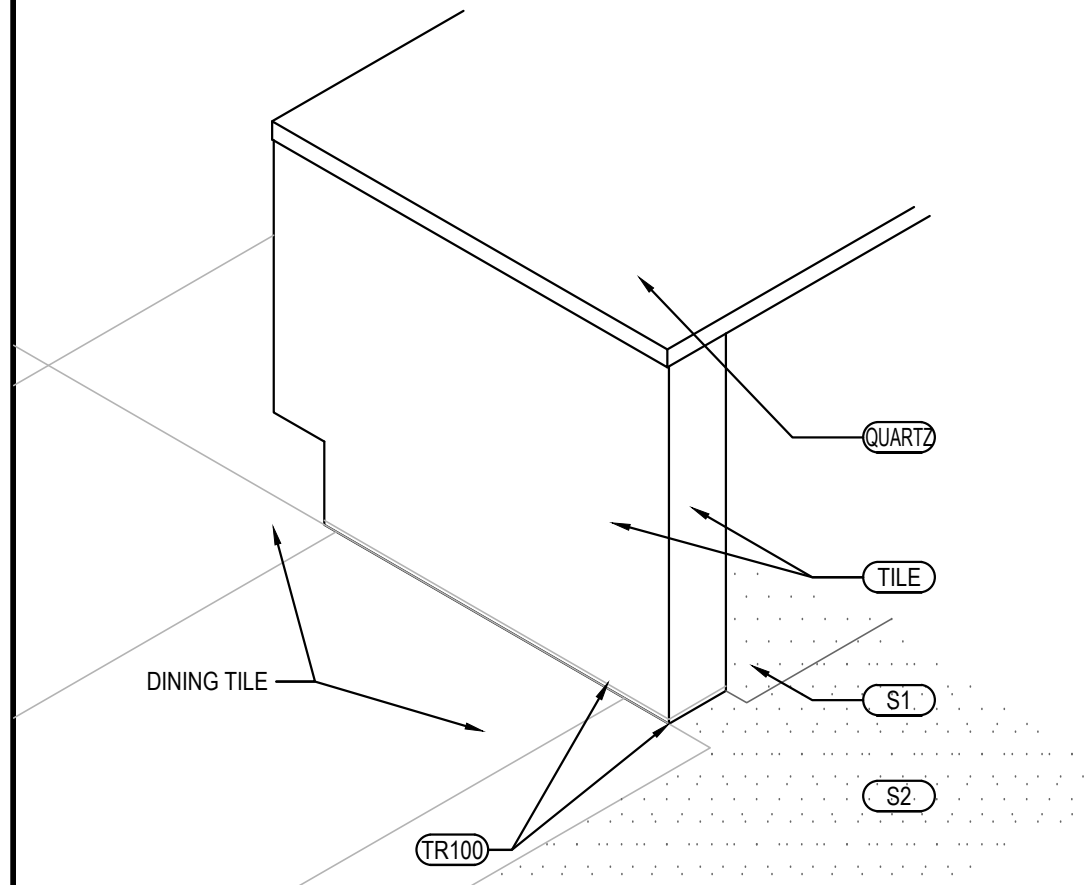


OUTSIDE CORNER DETAIL

3

Scale= 3" = 1'-0"

A-104



SERVICE COUNTER ISOMETRIC

2

Scale= 3/4" = 1'-0"

A-104

TILE SCHEDULE

INSTALLED AND FURNISHED BY: G.C. UNLESS NOTED OTHERWISE

01-11-19

NO.	MANUFACTURER	DESCRIPTION	COLOR	FINISH	JOINT	GROUT	REMARK
(T-108)	CMC AGGREGATE DOUG SALATINO 518-713-5371	12" X 24" X 3/8"	-	-	1/8"	G-111	RESTROOM WALL
(T-109)	CMC ITALIAN WOOD DOUG SALATINO 518-713-5371	6" X 48 X 3/8" & 8" X 48" X 3/8"	ITALIANO	-	1/8"	G-113	RR VESTIBULE & DINING ROOM WALLS
(T-200)	CMC DOUG SALATINO 518-713-5371	24" X 24"	BRAVADA GREIGE	MATTE	1/8"	G-96	DINING & RESTROOM FLOOR
(T-300)	EMSER - ECHO	3" HEXAGON	CALACATTA	MATTE	1/8"	G-114	BEVERAGE COUNTER BACKSPLASH
(S1)	SILIKAL	QUARTZ BLEND #4	-	PLAIN	-	-	KITCHEN, SERVICE FLOOR CONTACT: MARK FELDMAN 770-830-1404 (mfeldman@silikalamerica.com)
(S2)	SILIKAL	QUARTZ BLEND #4	-	ABRASIVE	-	-	JOHN COTHREN 888-830-1404 (cothran@silikalamerica.com)
(M100)	MATSINC 800.628.7462	NUWAY - 7/16" ALUM FOOT GRILLE	CHARCOAL	-	-	-	(2) 2' X 6' PIECES FOR A 4' X 6' OVERALL MAT SIZE IN VESTIBULE @ VESTIBULE STORES
GROUT	MANUFACTURER	DESCRIPTION	MFG.	COLOR	FINISH	REMARK	
(G-94)	MAPEI 800.42.MAPEI WWW.MAPEI.COM	LATEX MODIFIED GROUT	09	GREY	SANDED	KITCHEN AND SERVICE AREA FLOOR: 100% SOLIDS INDUSTRIAL GRADE EPOXY GROUT SEE PLAN. CONTACT: MIKE GRANATOWSKI 949.212.2363 (mgranatowski@mapi.com)	
(G-96)	MAPEI 800.42.MAPEI WWW.MAPEI.COM	LATEX MODIFIED GROUT	11	SAHARA BEIGE	POLY BLEND 1/8" NON-SANDED	DINING & RESTROOM FLOOR APPLY GROUT SEALER	
(G-111)	MAPEI 800.42.MAPEI WWW.MAPEI.COM	LATEX MODIFIED GROUT	19	PEARL GREY	POLY BLEND 1/8" NON-SANDED	RESTROOM, DINING APPLY GROUT SEALER	
(G-113)	MAPEI 800.42.MAPEI WWW.MAPEI.COM	LATEX MODIFIED GROUT	07	CHOCOLATE	POLY BLEND 1/8" NON-SANDED	APPLY GROUT SEALER	
(G-114)	CUSTOM BUILDING PRODUCTS	PRISM GROUT	11	SNOW WHITE	POLY BLEND 1/8" NON-SANDED	BEVERAGE COUNTER BACKSPLASH APPLY GROUT SEALER	

* SCHLUTER SYSTEM ALUMINUM TRIM:

COVE TILE TRIM: INSTALLED AT RESTROOM, SERVICE COUNTER, AND DRINK STATION
SCHLUTER SYSTEMS DILEX-AHK IS 125 ATGB (BRUSHED NICKEL ANODIZED ALUMINUM)
(TR100) - OUTSIDE CORNER CONNECTOR PIECE: DILEX-AHK-E90/AHK IS 125 ATGB (BRUSHED
NICKEL ANODIZED ALUMINUM)
- INSIDE CORNER CONNECTOR PIECE: DILEX-AHK-I90/AHK IS 125 ATGB (BRUSHED
NICKEL ANODIZED ALUMINUM)
- END CAP PIECE: DILEX-AHK-E/AHK IS 125 ATGB (BRUSHED NICKEL ANODIZED
ALUMINUM)

EDGE TILE TRIM:

SCHLUTER SYSTEMS RONDEC-RO125 ATGB (BRUSHED NICKEL ANODIZED ALUMINUM)
(TR101) - OUTSIDE CORNER CONNECTOR PIECE: RONDEC-EVRO125 ATGB (BRUSHED NICKEL
ANODIZED ALUMINUM)
- INSIDE CORNER CONNECTOR PIECE: RONDEC-I2L/RO125 ATGB (BRUSHED NICKEL
ANODIZED ALUMINUM)

* EPOXY GROUT BY MAPEI, KERAPOXY IEG, 100% SOLIDS INDUSTRIAL GRADE:
AREAS: UNDER HOOD AND 36" IN FRONT OF COOKING LINE, 3 COMPARTMENT SINK AND MOP SINK AREA
SEE MANUFACTURER'S SPECIFICATION, DETAILS AND GUIDE FOR PREPARATION,
MIXING, GROUTING AND CLEANING INSTRUCTION
NOTE: SEE INTERIOR SHEETS FOR WALL/ BASE TILE LOCATIONS AND
SPECIFICATIONS

FLOOR TILE TRANSITION TRIM: INSTALLED IN VESTIBULE
SCHLUTER SYSTEMS SCHIENE-RAE125 (SATIN ANODIZED ALUMINUM)
(TR102)

----- (TR100)

----- (T-200)

----- (S1)

----- (S2)

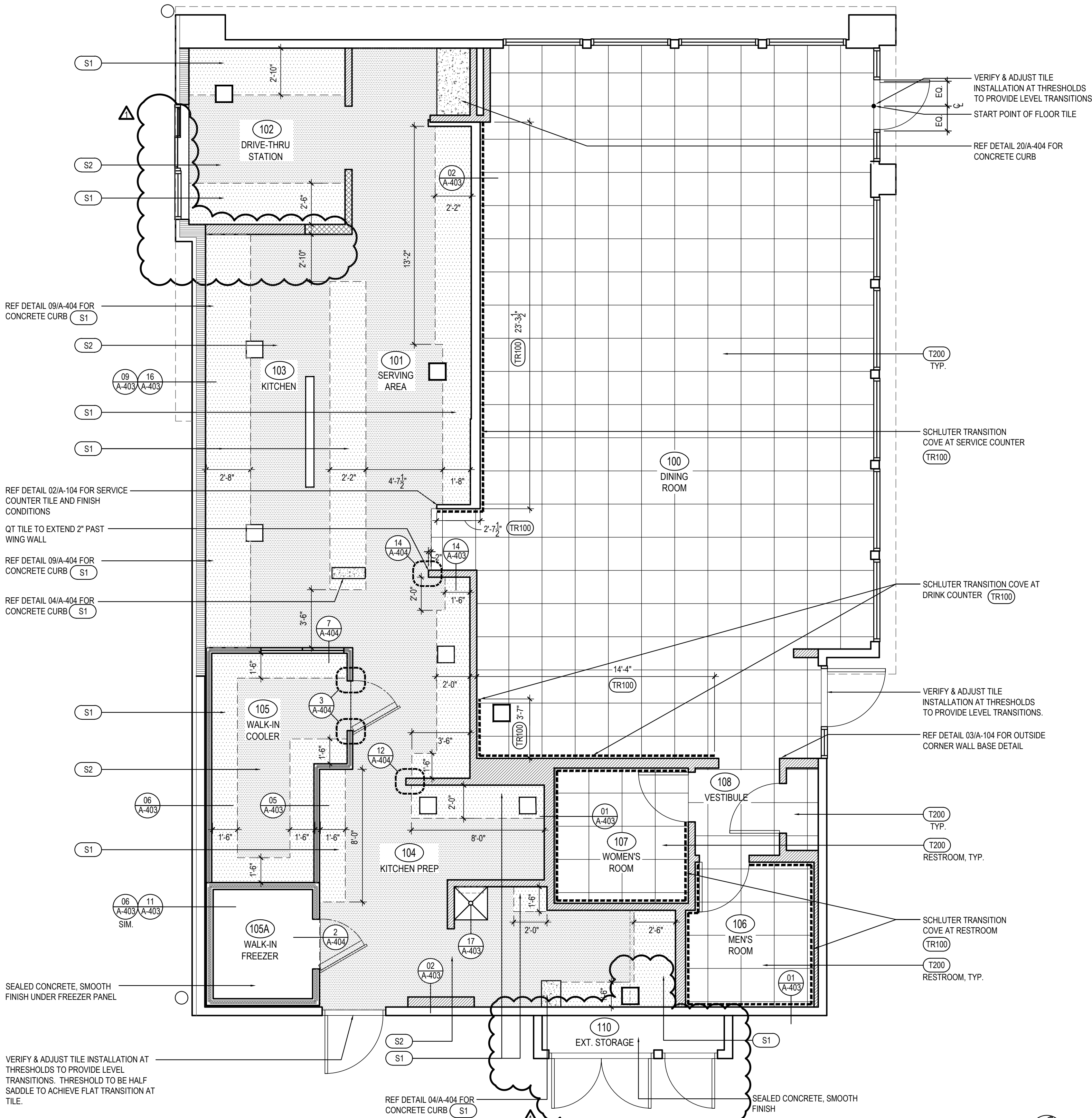
----- (M100)

FINISH SCHEDULE

A

Scale= NTS

A-104



FLOOR FINISH PLAN

1

Scale= 1/4" = 1'-0"

A-104



PANDA RESTAURANT GROUP INC.

1683 Walnut Grove Ave.
Rosemead, California
91770

Telephone: 626.799.9898
Facsimile: 626.372.8288

All ideas, designs, arrangement and plans indicated or
represented by this drawing are the property of Panda
Express Inc. and were created for use on this specific project.
None of these ideas, designs, arrangements or plans may be
used by or disclosed to any person, firm, or corporation
without the written permission of Panda Express Inc.

REVISIONS:

01.29.2020 ISSUE FOR BID

ISSUE DATE:

09.20.19 ISSUE FOR PERMIT

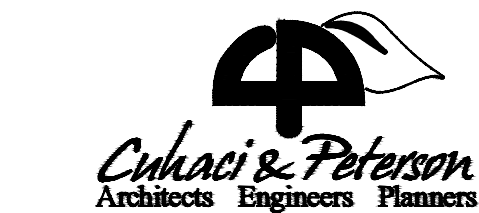
01.29.2020 ISSUE FOR BID

DRAWN BY:

JDV

PANDA PROJECT #: - 58-20-D7281

C&P PROJECT #: - 2190345



1925 Prospect Ave. Orlando, FL 32814

P (407) 661-9100

F (407) 661-9101

www.cuhaci.com

Florida Certified Professional AIA AIA00000000

01.29.2020

PANDA EXPRESS

TRUE WARM AND WELCOME 2300
TURNER MCCALL BLVD & HICKS DR
ROME, GA 30161

A-104

FLOOR FINISH PLAN AND SCHEDULE

TRUE WARM & WELCOME 2300 R1