

Parcel Map 8038  
Map BK 278  
Pg 53

# BASIS OF BEARINGS

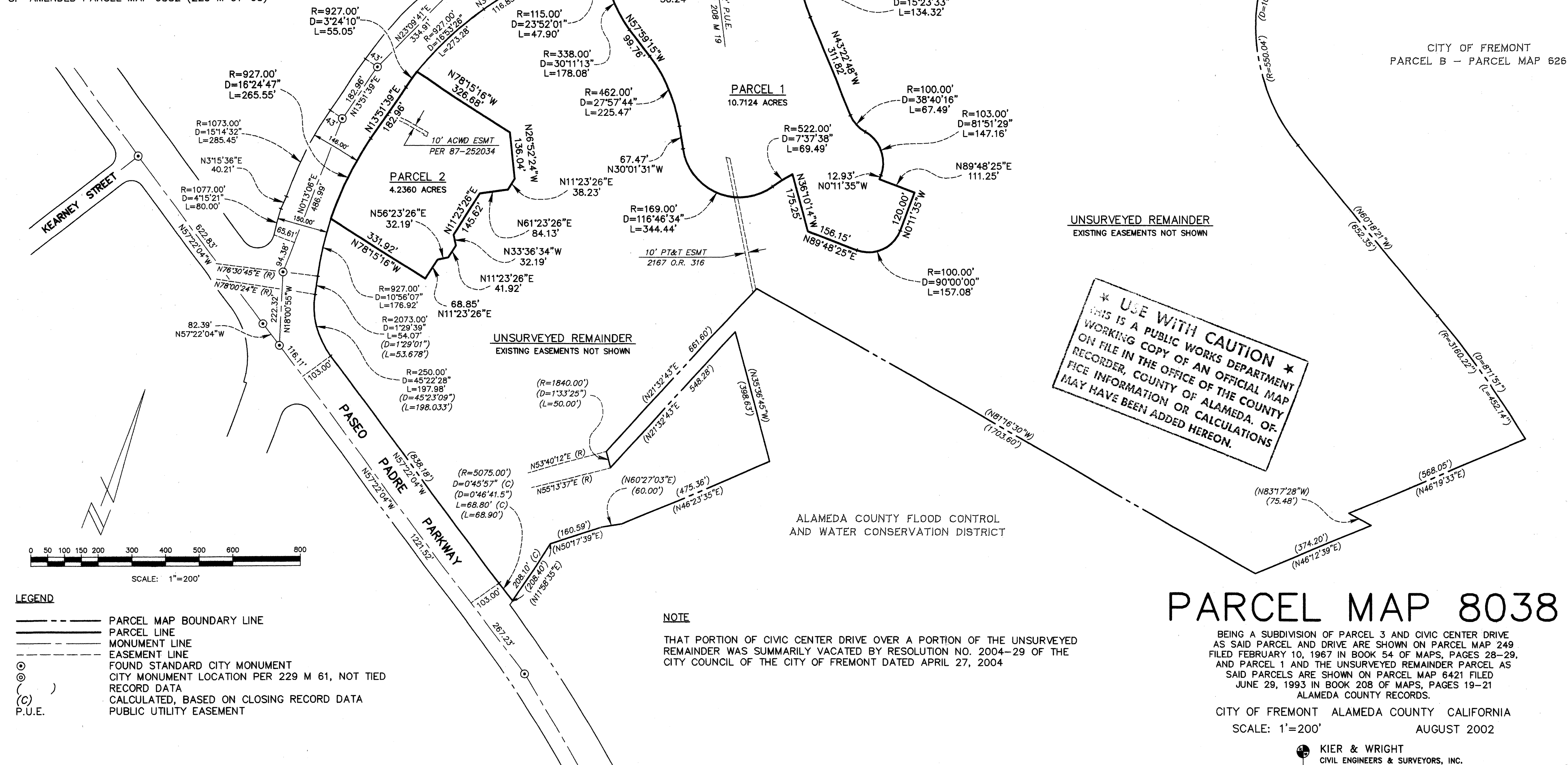
TAKEN ON THE MONUMENT LINE OF STEVENSON BOULEVARD BEARING NORTH 62°01'38" EAST, AS SHOWN ON PARCEL MAP 6421 FILED JUNE 29, 1993 IN BOOK 208 OF MAPS AT PAGES 19 THROUGH 21, ALAMEDA COUNTY RECORDS, AND AS SHOWN HEREON.

## NOTES

ALL DISTANCE SHOWN HEREON ARE IN FEET AND DECIMALS THEREOF.

## MAP REFERENCES

1. PARCEL MAP 6421 (208 M 19-21)
2. PARCEL MAP 249 (54 M 28-29)
3. PARCEL MAP 2087 (94 M 96-97)
4. PARCEL MAP 3355 (128 M 2-3)
5. PARCEL MAP 3619 (131 M 94-95)
6. PARCEL MAP 3977 (114 M 58-59)
7. PARCEL MAP 4292 (149 M 41-42)
8. AMENDED PARCEL MAP 6382 (229 M 61-63)



## LEGEND

- PARCEL MAP BOUNDARY LINE
- PARCEL LINE
- MONUMENT LINE
- EASEMENT LINE
- FOUND STANDARD CITY MONUMENT
- CITY MONUMENT LOCATION PER 229 M 61, NOT TIED
- ( ) RECORD DATA
- (C) CALCULATED, BASED ON CLOSING RECORD DATA
- P.U.E. PUBLIC UTILITY EASEMENT

## NOTE

THAT PORTION OF CIVIC CENTER DRIVE OVER A PORTION OF THE UNSURVEYED REMAINDER WAS SUMMARILY VACATED BY RESOLUTION NO. 2004-29 OF THE CITY COUNCIL OF THE CITY OF FREMONT DATED APRIL 27, 2004