

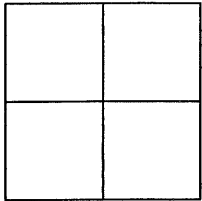
CORNER RECORD

BK 54 PG 6

CR 3722

APN No. 099 - 015 - 015 - 02 (Optional)

Document Number

Unincorporated LivermoreCounty of ALAMEDA, CaliforniaBrief Legal Description Found round monument well on N. Livermore Av. Sta. 67+39.62

CORNER TYPE

Government Corner ☐ Control ☐
Meander ☐ Property ☐
Rancho ☐ Other ☒
Date of Survey 06/03/09

COORDINATES

(Optional)

N. 442720.1
E. 1632904.1
Zone Datum
Elev.

Corner - Left as found ☒ Found and tagged ☐ Established ☐ Reestablished ☐ Rebuilt ☐

In compliance with Section 8771 of the Professional Land Surveyors' Act, this corner record is being filed to ESTABLISH ☒ / REESTABLISH ☐ the position of an existing monument PRIOR ☒ / SUBSEQUENT ☐ to street or highway reconstruction. (Use this portion only when applicable.)

Identification and type of corner found: Evidence used to identify or procedure used to establish or reestablish the corner:
Found round monument well in NB Lane on N. Livermore Av. at angle point stamped "NL J 1962"

Established 4 reference points, set 1/2" rebar with plastic cap. See page 2.

Monument I.D. No. UT42Y4

A description of the physical condition of the monument as found and as set or reset: Found in good condition.

SURVEYOR'S STATEMENT

This Corner Record was prepared by me or under my direction in conformance with the Land Surveyors' Act on July 31 2009.

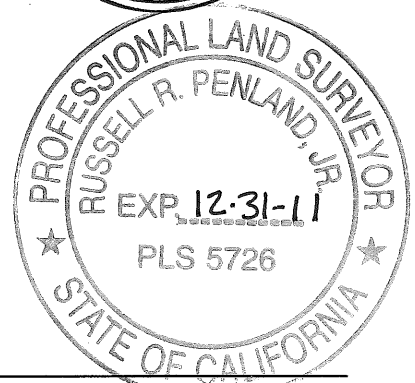
Signed Albert Jordan L.S. or R.C.E. Number 6623
EXPIRES 12/31/2011



COUNTY SURVEYOR'S STATEMENT

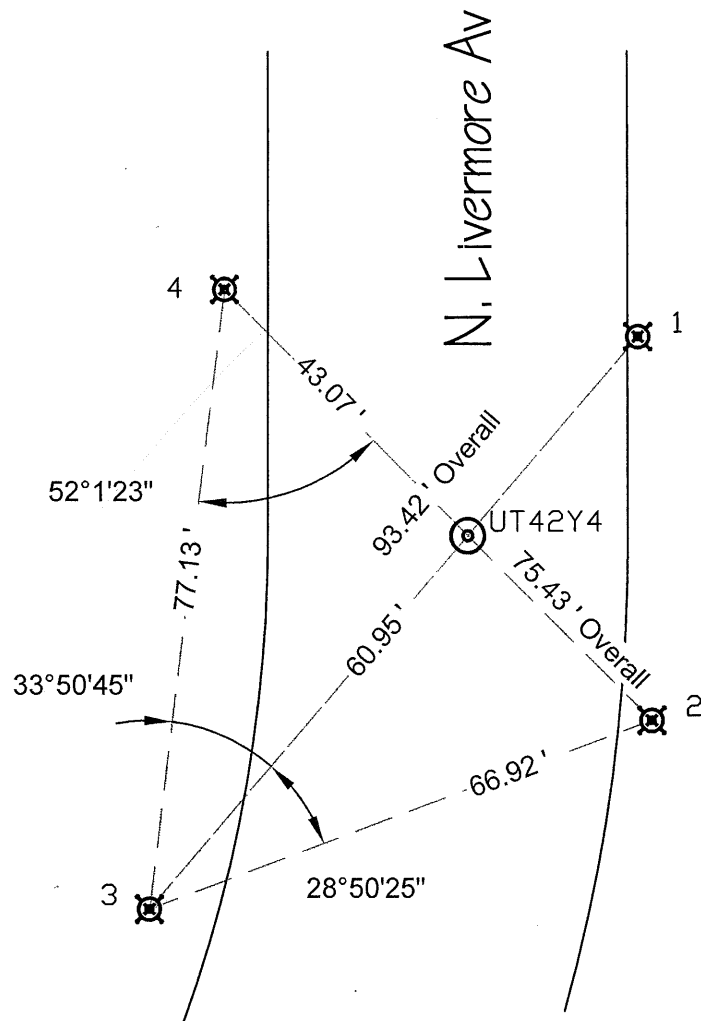
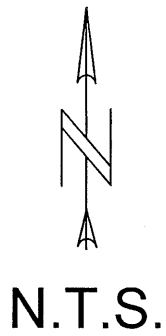
This Corner Record was received 6-3 2009 and examined and filed 1-27 2010.

Signed Russell R. Penland, Jr. Title County Surveyor



County Surveyor's Comment

UT42Y4



Legend

Found: Well Monument "NL J 1962"



Set: $\frac{1}{2}$ " Rebar w/Plastic Cap



Credits

Lead: Brian Danforth

Assist.: Steven Sousa

Computations: Terri Graumann

CAD: reid

File Name: CR3722_20090731 CR Page 2 with dxf.dwg

Job#: R23343

Reference(s)

RS for Alignment of North Livermore Avenue

RS Bk 4 - Pg 55-69, Sht 6 OF 15

Alameda County Monument Id System (PTa...) **UT42Y4**