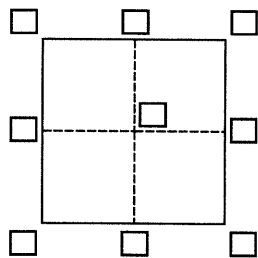


# CORNER RECORD

Agency Index BK 130 PG 88  
Document Number CR 14042

City of Castro Valley County of Alameda, California  
Brief Legal Description Santa Maria Avenue and Lorena Avenue



## CORNER TYPE

Government Corner ☐ Control ☒  
Meander ☐ Property ☐  
Rancho ☐ Other ☐

Date of Survey December 5, 2019

## COORDINATES (Optional)

N.                      E.                     

Elevation                     

Units Metric ☐ U.S. Survey Foot ☒

Horizontal Datum                     

Zone                      Epoch Date                     

Vertical Datum                     

☐ Complies with Public Resources Code §§8801-8819

☐ Complies with Public Resources Code §§8890-8902

PLS Act Ref.: ☐ 8765(d) ☒ 8771 ☐ 8773 ☐ Other:

Corner/  
Monument: ☒ Left as found ☐ Established ☐ Rebuilt ☐ Pre-Construction  
☐ Found and tagged ☐ Reestablished ☐ Referenced ☒ Post-Construction

Narrative of corner identified and monument as found, set, reset, replaced, or removed:

☒ See sheet #2 for description(s):

MONUMENT WAS REFERENCED PRIOR TO STREET RECONSTRUCTION PER CR 12679. THE  
MONUMENT WAS CHECKED AND FOUND TO BE UNDISTURBED.  
ALAMEDA COUNTY SPEC NO. 2197

## SURVEYOR'S STATEMENT

This Corner Record was prepared by me or under my direction in conformance with

the Professional Land Surveyors' Act on December 5, 2019

Signed Denise D. Baker P.L.S. or R.C.E. No. PLS 7947



## COUNTY SURVEYOR'S STATEMENT

This Corner Record was received JAN 27 2020

and examined and filed JAN 29 2020

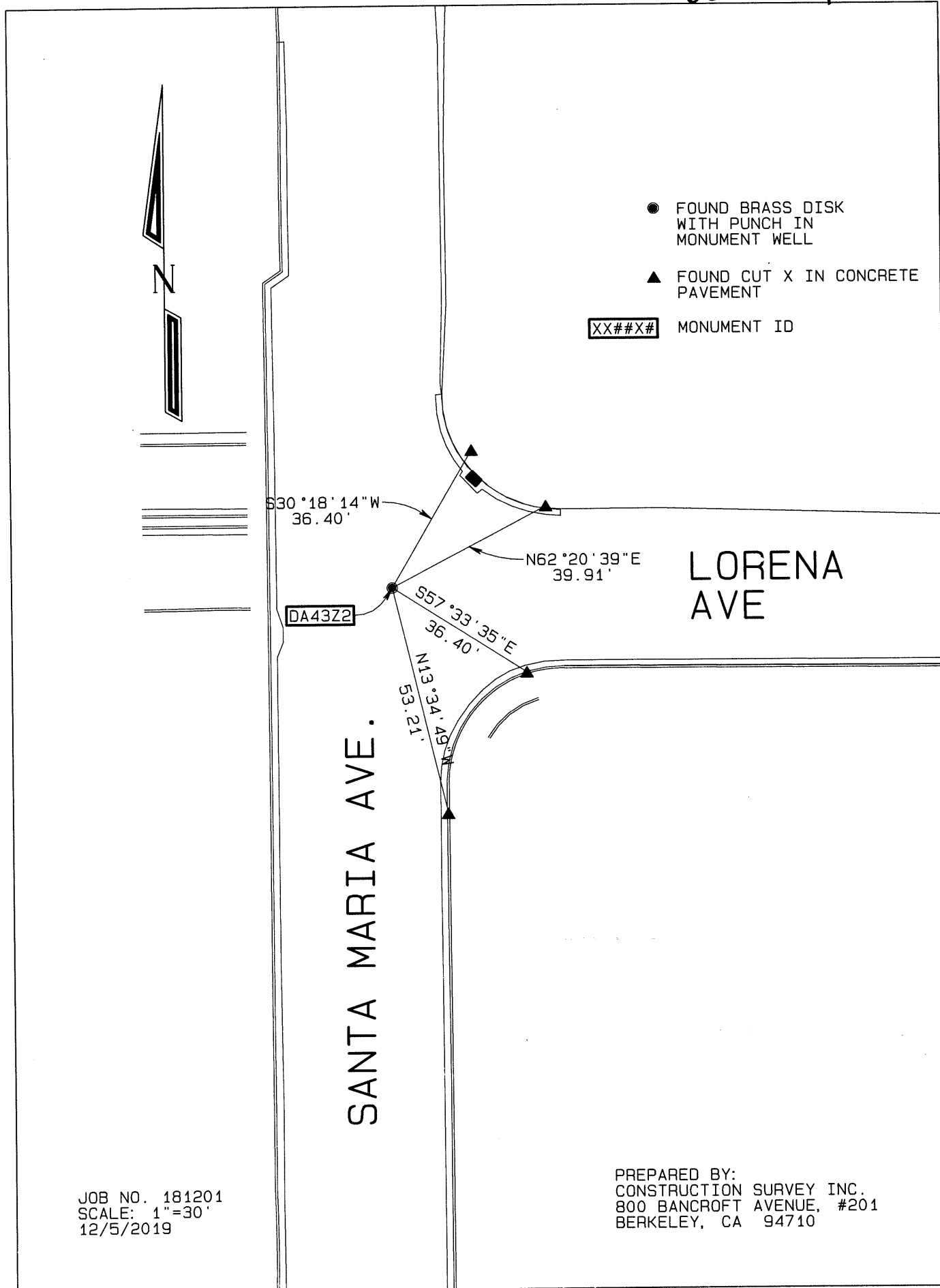
Signed D. Ian Wilson P.L.S. or R.C.E. No. 7010

Title ALAMEDA COUNTY SURVEYOR

County Surveyor's Comment

SPECIFICATION NO. 2197





JOB NO. 181201  
SCALE: 1"=30'  
12/5/2019

PREPARED BY:  
CONSTRUCTION SURVEY INC.  
800 BANCROFT AVENUE, #201  
BERKELEY, CA 94710