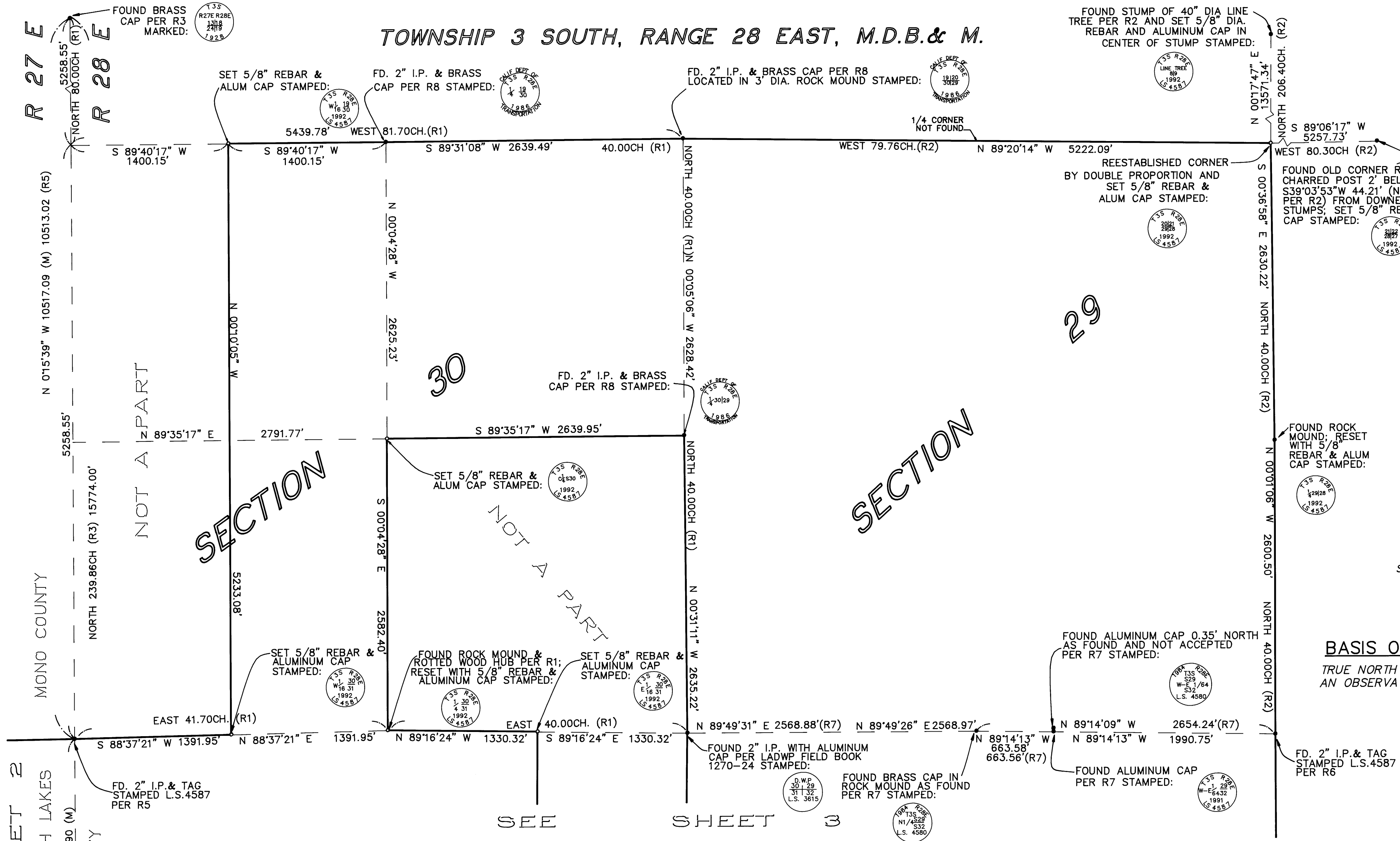


TOWNSHIP 3 SOUTH, RANGE 28 EAST, M.D.B. & M.



RECORD INFORMATION

- R 1 BLM NOTES 105-10, DATED MAY 30, 1855
- R 2 BLM NOTES 113-3, DATED JAN. 8, 1857
- R 3 BLM NOTES 483-5, DATED JUNE 9, 1927
- R 4 BLM NOTES 532-4, DATED JULY 17, 1967
- R 5 RECORD OF SURVEY MAP BOOK 1, PAGE 76.
- R 6 RECORD OF SURVEY MAP BOOK 1, PAGE 107.
- R 7 RECORD OF SURVEY MAP BOOK 2, PAGE 123.
- R 8 CORNER RECORDS 3S28-30-1 THRU 3S28-30-03. ON FILE IN THE MONO COUNTY SURVEYOR'S OFFICE

LEGEND

- INDICATES FOUND MONUMENT AS NOTED.
 - INDICATES SET 5/8" REBAR WITH 2" ALUM. CAP STAMPED AS NOTED.
- ALL BEARINGS AND DISTANCES ARE MEASURED UNLESS OTHERWISE NOTED
- NOTE: VARIATION FROM COURSES SHOWN ON R7 DOES NOT REPRESENT A COMPLETE RESURVEY OF SECTION 32, BUT RATHER A READJUSTMENT OF MEASUREMENTS FROM THAT SURVEY BY LEAST SQUARES TECHNIQUES, WHEN COMBINED INTO A NETWORK WITH THE SURVEY OF THE SURROUNDING SECTIONS.

RECORD OF SURVEY NO. 36 - 103

BEING A SURVEY OF GEOTHERMAL LEASE BOUNDARIES WITHIN SECTIONS 29, 30, 31 AND 32, T.3S., R.28E., M.D.B. & M., IN THE UNINCORPORATED TERRITORY OF MONO COUNTY, CALIFORNIA, AND SECTION 36, T.3S., R.27E., M.D.B. & M., IN THE TOWN OF MAMMOTH LAKES, MONO COUNTY, CALIFORNIA.