

# SJ steam L engine



A total of 47 units of L locomotives were built in 1904-1908 and was designed primarily for passenger train in northern Sweden.

During the 1940s and 1950s, they could also be seen in the south of Sweden. Some locomotives were fitted with smoke deflectors and equipped for wood burning.

Maximum speed was 80 km/h.

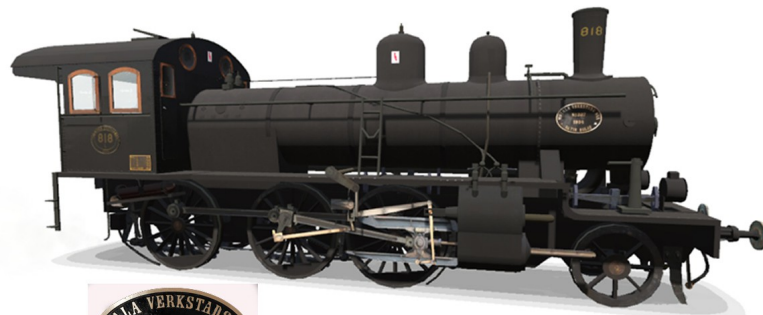
All locomotives L are scrapped.

The SJ L steam loco is developed for TANE or later versions.

The package includes features such as:

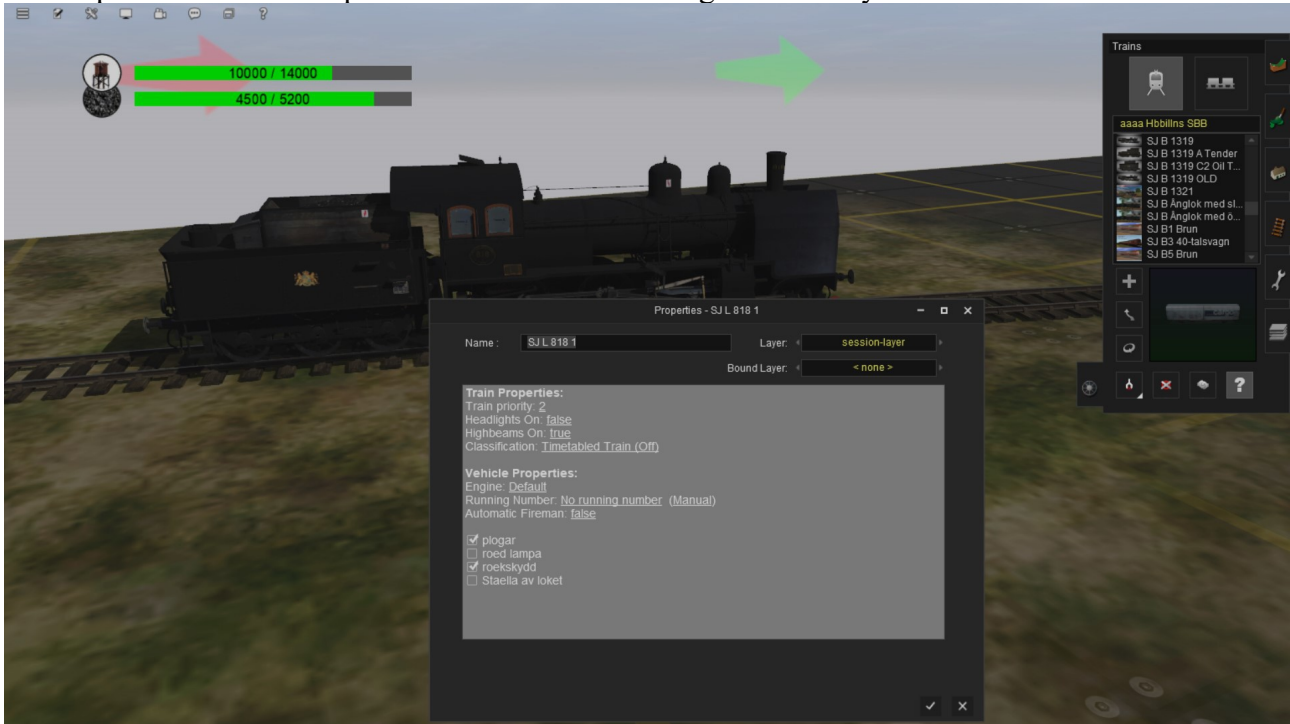
1. Toggle disconnect loco initiated from ctrl file or window menu => static (No sound, no smoke and no driver figure) and towable. Duration procedure appr. 4 minutes.\*
2. Toggle draincocks initiated from ctrl file or cabin
3. Increase/decrease blower initiated from ctrl file or cabin.
4. Ejector on initiated from ctrl file.
5. Tough startup initiated from ctrl file or window.
6. Open/close side/front doors/windows initiated from ctrl file.
7. Toggle air-pump valve for air-pump on/off.
8. The loco may slip during acceleration phase, if train weight is larger than 175 tons.  
Only valid in DCC mode.
9. The loco radius rod is in correct position during forward/backward direction.  
Only valid in DCC mode.

\* The driver is NOT disabled any more.



## Surveyor mode

Below picture shows loco parameters that can be changed in Surveyor mode:



Note.

1. "staella av loket" = disconnect
2. "roekskydd" = smoke deflector
3. Tender also has parameters to change

## Driver mode

Below picture shows loco parameters that can be changed in Driver mode:



Note.

1. You have to move the loco once, before some of the parameters will be accessible.

## DCC mode

Download below PDF file and you can study how to set up the ctrl file:

<http://www.mediafire.com/file/e9wrp5xjxhwvf6j/KonfigJoCommsCtrlFile.pdf/file>

Valid keyboard cmds for this loco:

alt-x Toggle disconnect loco. This procedure lasts for 4 minutes.

alt-f Toggle close/open front windows.

alt-v Toggle left cabin window/door.

alt-h Toggle right cabin door/window.

alt-d Toggle draincocks => smoke scenario

shift-i Starting ejector => smoke scenario

n Increase blower. (3 positions) => smoke scenario

shift-n Decrease blower. (3 positions) => smoke scenario

alt-t Tough start. Wait to start till safetyvalve sounds.

**NOTE. Of course, the keys are also valid in Cabin mode.**

Air pump is turned on when one or more cars are connected to the train.



Check radius rod position:



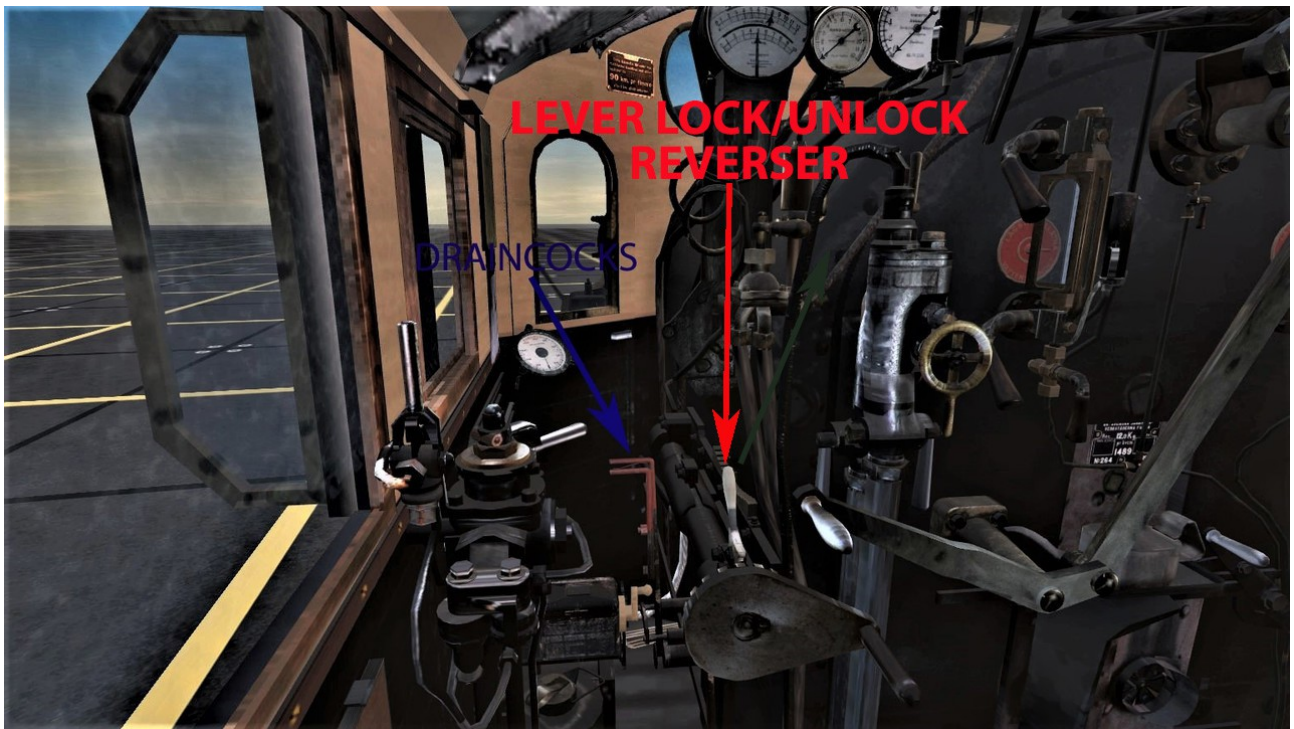
Note. Only valid in DCC mode.

In cabin mode radius rod is in forward position constantly.

However, you can change rod position in DCC mode and then goto Cabin mode.

## Cabin mode

2 levers in cabin affecting the smoke amount:





Valve for air pump:



**NOTE.**

1. If driver forgets to turn on air pump and cars are connected to train, the loco will be disabled, i.e. not drivable



