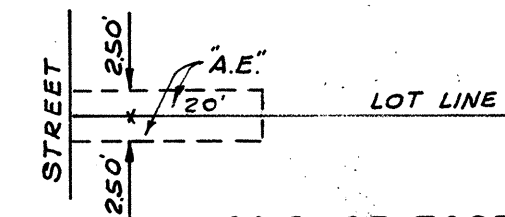
**LEGEND**

EXISTING CONCRETE MONUMENT SHOWN THUS—○—  
 CONCRETE MONUMENT WITH CAST IRON FRAME AND COVER TO BE INSTALLED SHOWN THUS—⊙—  
 BUILDING SET-BACK LINES TO BE AS REQUIRED BY THE ORDINANCE CODE OF THE COUNTY OF ALAMEDA TITLE 9, CHAPTER 2.  
 ANCHOR EASEMENTS SHOWN HEREON ARE DESIGNED "A.E." THE DIMENSIONS OF EACH EASEMENT ARE 250'x25' UNLESS OTHERWISE SHOWN.

**BASIS OF BEARINGS**

TRACT 2003

**ANCHOR EASEMENT**

SCALE: 1" = 20'

**TRACT 2764**

EDEN TOWNSHIP  
 ALAMEDA COUNTY, CALIFORNIA  
 IN UNINCORPORATED TERRITORY IN THE COUNTY OF ALAMEDA  
 SCALE: 1" = 40' MAY, 1965  
 MURRAY AND MCCORMICK, INC.  
 CONSULTING CIVIL ENGINEERS  
 SAN LEANDRO, CALIFORNIA

SHEET NO. 2 OF 2 SHEETS

TR.  
2764

61