

Tract Map 6989
Map Bk 250

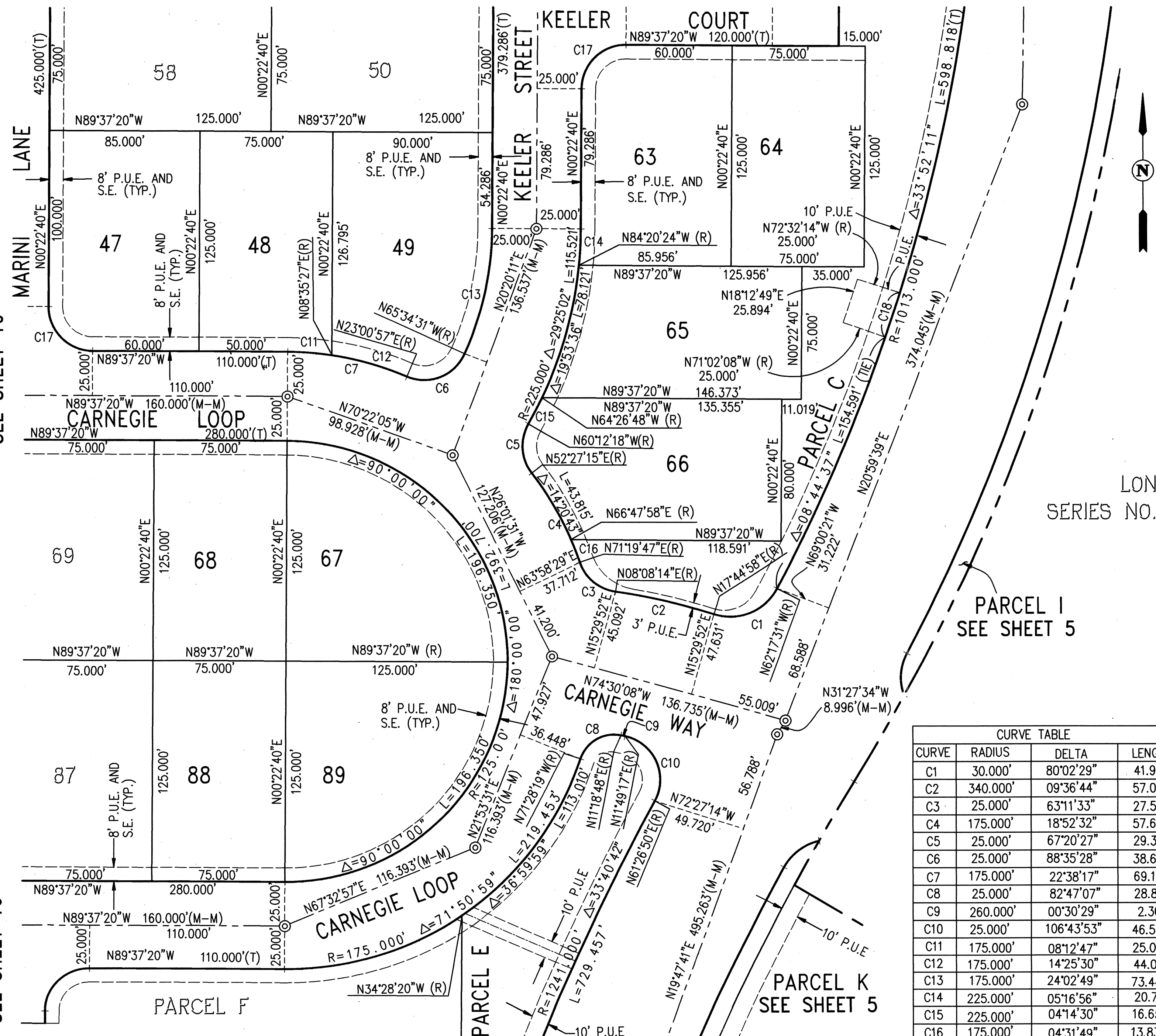
SEE SHEET 7

SEE SHEET 6

SEE SHEET 6

SEE SHEET 10

SEE SHEET 10



LEGEND

- SUBDIVISION BOUNDARY
- LOT LINE
- EASEMENT LINE
- MONUMENT LINE
- (T) TOTAL
- (R) RADIAL
- () RECORD DATA
- (M-M) MONUMENT TO MONUMENT
- (M-TL) MONUMENT TO TRACT LINE
- ⊙ SET STANDARD STREET MONUMENT
- ⊙ FOUND STANDARD STREET MONUMENT
- ⊙ SET 5/8" REBAR & CAP LS 7176
- ▲ FOUND RAILROAD SPIKE
- FOUND MONUMENT AS NOTED
- P.U.E. PUBLIC UTILITY EASEMENT
- S.E. SIDEWALK EASEMENT
- S.S.E. SANITARY SEWER EASEMENT
- S.D.E. STORM DRAIN EASEMENT
- S.O.E. STORMWATER OVERFLOW EASEMENT
- E.V.A.E. EMERGENCY VEHICLE ACCESS EASEMENT
- W.L.E. WATER LINE EASEMENT
- P.H.E. PUBLIC HIGHWAY EASEMENT

LONESTAR
SERIES NO. 99-102707

BASIS OF BEARINGS:

THE BASIS OF BEARINGS FOR THIS MAP IS DETERMINED BY FOUND MONUMENTS SHOWN HEREON. THE BEARING BEING N89°37'20"W PER TRACT 5466 (162 M 36). CALIFORNIA COORDINATE SYSTEM ZONE III.

NOTE: A CHISELED MARK SHALL BE CUT INTO THE TOP OF CURB AT THE PROLONGATION OF THE LOT LINES, AND A REBAR AND CAP SHALL BE SET AT ALL NON-FRONTAGE CORNERS AND ANGLE POINTS.

CURVE TABLE

CURVE	RADIUS	DELTA	LENGTH
C1	30.000'	80°02'29"	41.910'
C2	340.000'	09°36'44"	57.040'
C3	25.000'	63°11'33"	27.573'
C4	175.000'	18°52'32"	57.652'
C5	25.000'	67°20'27"	29.383'
C6	25.000'	88°35'28"	38.655'
C7	175.000'	22°38'17"	69.144'
C8	25.000'	82°47'07"	28.898'
C9	260.000'	00°30'29"	2.305'
C10	25.000'	106°43'53"	46.570'
C11	175.000'	08°12'47"	25.085'
C12	175.000'	14°25'30"	44.059'
C13	175.000'	24°02'49"	73.447'
C14	225.000'	05°16'56"	20.743'
C15	225.000'	04°14'30"	16.657'
C16	175.000'	04°31'49"	13.837'
C17	25.000'	90°00'00"	39.270'
C18	1013.000'	01°30'06"	25.550'

SCALE: 1"=40'

DECEMBER 1999

**TRACT 6989
DUNSMUIR**

BEING A SUBDIVISION OF A PORTION OF SECTION 14
TOWNSHIP 3 SOUTH, RANGE 2 EAST, MOUNT DIABLO MERIDIAN
AND A PORTION OF THE RANCHO LAS POSITAS

CITY OF LIVERMORE ALAMEDA COUNTY CALIFORNIA
CARLSON, BARBEE & GIBSON, INC.
ENGINEERS SURVEYORS PLANNERS
SAN RAMON, CALIFORNIA

SHEET 9 OF 13

BK 250 P 37